



**PREVEST DenPro®**  
THE FUTURE OF DENTISTRY

Dedicated to excellence  
in **dental care**

Product  
Catalog  
2026



## ABOUT THE COMPANY

PrevestDenPro Limited commenced its journey in 1999 with a single manufacturing unit, a small but dedicated workforce and a focused range of dental materials. From these humble beginnings, the company has steadily expanded its capabilities, product portfolio and market reach, transforming itself into a prominent international player in the dental industry with a strong presence in more than 90 countries across Europe, the Americas, Asia, Africa and the Middle East.

Today, PrevestDenPro operates a modern, state-of-the-art manufacturing facility located in the Export Promotion Industrial Park, Bari Brahmana, Jammu, India. The facility is equipped with advanced processing, filling and packaging lines designed specifically for dental materials, ensuring high productivity and consistent quality. In addition, the company has established a dedicated, state-of-the-art research and testing centre that focuses on the development of new products, continuous improvement of existing formulations, and comprehensive quality testing to meet the evolving needs of global dental professionals. The research centre is recognised by the Ministry of Science & Technology, Government of India.

To support its commitment to quality and regulatory compliance, the company has implemented a robust and efficient Quality Management System (QMS). This QMS has been assessed and certified by TUV SUD, a reputed German notified body, and is structured to comply with both European and Indian medical device regulations, including stringent requirements on product safety, performance, documentation and traceability. These systems and certifications enable PrevestDenPro to reliably serve diverse international markets and to work closely with distributors, clinics and hospitals that demand consistently high standards.

PrevestDenPro is guided by a strong and experienced corporate management team. The company is led by Mr. Atul Modi, a qualified Mechanical Engineer with more than four decades of experience in successfully managing diversified businesses and driving long-term growth. He is supported by Mrs. Namrata Modi, Executive Director, who holds a Master's degree in Business Administration and brings over 20 years of hands-on experience in the strategic and operational management of the company. The research and academic vision of the organisation is shaped by Dr. S. Sai Kalyan, MDS, MS, Ph.D., Director – Research & Academics, who contributes more than 16 years of experience in academics and research, ensuring a strong scientific foundation for product innovation. The Sales & Marketing Operations of the organisation are managed by Mr. Vaibhav Munjal, Executive Director an engineering and management professional with 17 years of experience in sales and marketing operations, responsible for driving market expansion and customer engagement.

The company's management is further supported by a team of over 150 highly skilled professionals managed through a structured, performance-driven organisation. This team includes dental professionals, engineers, management graduates, chemists and quality specialists who collaborate closely to design, develop and manufacture high-quality, innovative dental materials. A dedicated research and development department works continuously on new formulations, process optimisation and application-oriented solutions, ensuring that PrevestDenPro products meet the demanding expectations of clinicians worldwide. As a result, the company's products are widely appreciated by dental professionals for their reliability, ease of use and consistent clinical performance.

PrevestDenPro's sustained commitment to innovation, quality and the advancement of oral healthcare has been widely recognised by leading industry bodies and academic institutions. The company has entered into Memoranda of Understanding with 20 premier dental colleges across India to collaborate on joint research and educational programmes, scientific studies and specialised training initiatives. Over the years, it has received numerous distinctions, including awards for Best Dental Manufacturing Company from the Indian Dental Association, Top MSME 2022 from The Associated Chambers of Commerce & Industry. On the international trade front, the Federation of Indian Export Organisations has honoured PrevestDenPro with the "Top Exporter Award," while the Ministry of Commerce, Government of India, has designated the company as a "Star Export House," reaffirming its significant contribution to India's exports and its strong reputation in global dental markets.

## Shaping The Future of Dentistry

FY 2024–25 was a year of meaningful progress and focused execution for Prevest DenPro Limited. As a growing force in the dental materials industry, we continue to evolve—expanding our capabilities, deepening our presence across domestic and global markets, and aligning with the shifting landscape of modern dentistry.

Guided by our commitment to quality, innovation, and clinical excellence, we have strengthened our product portfolio with new additions across restorative, prosthetic, preventive, and orthodontic segments.

To support this growth, we have continued to invest in our manufacturing capabilities, R&D infrastructure, and digital systems, ensuring that our operations remain agile, compliant, and scalable.

While our international markets continue to be a key growth driver, we have also made focused efforts to expand our domestic footprint.

With a growing network of channel partners and increased outreach across urban and semi-urban regions, we are working to make world-class dental products more accessible within India.



# Why Choose Us?

## Proven Legacy

With a journey that began in 1999, Prevest Denpro Limited has steadily built a strong foundation in the dental materials industry. As one of the pioneering companies from Jammu to be listed on the BSE SME platform, our legacy is rooted in innovation, quality, and trust. Over the years, we've grown from a modest facility to a globally recognized brand, exporting to over 80 countries. This legacy of perseverance and excellence continues to fuel our long-term vision for sustainable growth.

## Innovative Product Portfolio

At the core of our success lies our unwavering commitment to innovation. Our comprehensive portfolio includes restorative materials, endodontics, adhesives, impression materials, and oral care products. The recent launch of our consumer healthcare brand Oradox marks our foray into oral wellness solutions. With continuous investment in R&D, we aim to bring clinically relevant, high-performance products to dental professionals across the world.

## Robust Distribution Network

Our extensive domestic and international distribution network ensures timely availability of products to dental professionals and institutions. With a strong presence across India and strategic partnerships abroad, we have built a reliable supply chain that caters efficiently to diverse markets. Our wholly owned subsidiary, Denviso Biomed Limited, established in Gurugram, strengthens our marketing outreach and customer engagement.

## Trusted Brand in Dental Materials

Prevest Denpro has emerged as a trusted brand in the dental industry, known for quality, affordability, and reliability. Our growing reputation among dental practitioners, institutions, and distributors is a testament to our consistent performance and ethical business practices. We continue to strengthen our brand presence through academic partnerships, global exhibitions, and digital engagement.

## Our People, Our Strength

Our team is the driving force behind our growth. From research scientists and manufacturing experts to customer service and marketing professionals, each member plays a vital role in realizing our mission. We foster a culture of innovation, inclusivity, and continuous learning that empowers our people to deliver excellence at every level.



# Table of Contents

|                                      |    |
|--------------------------------------|----|
| ADHESIVES, BONDING AGENTS & ETCHANTS | 04 |
| COMPOSITES                           | 08 |
| CEMENTS & LINERS                     | 11 |
| ENDODONTICS                          | 20 |
| ORTHODONTICS                         | 34 |
| FINISHING & POLISHING                | 36 |
| CERAMIC REPAIR                       | 37 |
| VARNISHES                            | 39 |
| AUXILIARIES                          | 42 |
| IMPRESSION MATERIALS                 | 45 |
| TOOTH WHITENING                      | 50 |
| HEMOSTATIC MATERIALS                 | 52 |
| TEMPORARY MATERIALS                  | 53 |
| LAB MATERIALS                        | 55 |
| ENDODONTIC FILES                     | 57 |
| HYGIENE & DISINFECTANT               | 59 |
| 3D RESINS                            | 63 |

## FUSION BOND 7

### Light Curing Self Etching One Component Bonding Adhesive

Fusion Bond 7 is a 7th generation, multi-functional, light cured one component dentine/enamel bonding agent for bonding of both direct and indirect restoration. Fusion Bond 7, primes & bonds in one step.



#### INDICATIONS

- Adhesion of composite resin for direct / indirect restorations

#### PRODUCT BENEFITS

- Single step self-etch bonding agent for direct composite restorations
- Excellent adhesion to dentine and enamel
- Long lasting bonding strength
- Universal for all light curing restorations

#### PACKAGING

- REF 10001 Intro Pack : 1 x 5ml Squeeze Bottle, 1 x Instruction Manual  
 REF 10002 Economy Pack : 2 x 5ml Squeeze Bottle, 40 x Micro Brushes, 1 x Instruction Manual

| Technical Data         |              | Standard Applied |
|------------------------|--------------|------------------|
| 1. Curing Time         | 20 – 30 sec. | ISO 29022        |
| 2. Shear Bond Strength | 15 – 20 MPa  |                  |

## FUSION BOND 5

### Light Curing Total Etch One Component Bonding Adhesive

Fusion Bond 5 is a multifunctional, light cured, one component dentine/enamel bonding agent. It has excellent adhesion to both the tooth tissue and composite resin. One bottle system, easy to use and can be applied to both dentine and enamel.



#### INDICATIONS

- Adhesion of the composite resin for direct restoration/indirect restoration

#### PRODUCT BENEFITS

- Simple to use one step bonding material
- Excellent adhesion to both dentin and enamel
- Long lasting bonding strength

#### PACKAGING

- REF 10003 Intro Pack : 1 x 5ml Squeeze Bottle, 1 x Instruction Manual  
 REF 10004 Economy Pack : 2 x 5ml Squeeze Bottle, 40 x Micro Brushes, 1 x Instruction Manual

| Technical Data         |              | Standard Applied |
|------------------------|--------------|------------------|
| 1. Curing Time         | 20 – 30 sec. | ISO 29022        |
| 2. Shear Bond Strength | 15 – 20 MPa  |                  |

## FUSION BOND DC

### Dual Curing Total Etch Dentine/Enamel Bond

Fusion Bond DC is dual curing bonding agent for enamel and dentine, as well as to metal and ceramic suitable for use with dual-curing and self-curing composites. It is a two components system to be used with self curing and dual curing resin cements to bond all indirect restorations including metal, ceramic and composites crowns, inlays, onlays, veneers and bridge retainers and bonding of endodontics posts.



#### INDICATIONS

- Direct, light cured/self cured composite and compomer restorations.
- Bonding of Indirect restorations and light/self cure resin cemented veneers
- Direct, light cured/self cure composite restorations and core build-up
- Indirect restoration resin cemented inlays, onlays, crown and bridge retainers
- Endodontic post cementation

#### PRODUCT BENEFITS

- High bond strength to both dentine and enamel
- Dual cure versatility
- Reduced post operative sensitivity

#### PACKAGING

- REF 10005 1 x 5ml Bonding Agent, 1 x 5ml Activator, 20 x Micro Brushes, 1 x Instruction Manual

| Technical Data         |              | Standard Applied |
|------------------------|--------------|------------------|
| 1. Curing Time         | 20 – 30 sec. | ISO 29022        |
| 2. Shear Bond Strength | 15 – 17 MPa  |                  |

## RENEW MDP

### One Component Self Etch Bonding Agent

Renew MDP is a light-cured single-component dentine bonding agent that combines etching, priming and bonding in one bottle. It is an ethanol-water based dental adhesive containing 10-Methacryloyloxydecyl Dihydrogen Phosphate (10-MDP), a functional monomer which helps in bonding to dentin and cut and un-cut enamel. Renew MDP has been designed to be fully compatible with light-cured, self-cured and dual-cured composite materials. Renew MDP can be used for the bonding of both direct and indirect restorations and may be used with or without phosphoric acid etchant.



#### INDICATIONS

- Light cure bonding agent for dual, light and self curing composites, compomers and ormocers.
- Bonding of indirect restorations and endodontic posts.
- Intraoral repair.
- Desensitizer.

#### PRODUCT BENEFITS

- Renew MDP is fully compatible with light-cured, self-cured and dual-cured composite materials.
- Renew MDP can be used for the bonding of both direct and indirect restorations and may be used with or without phosphoric acid etchant.
- (10-MDP) a functional monomer which helps in bonding to dentin, cut / un-cut enamel.

#### PACKAGING

- REF 10016 Regular Pack : 1 x 5ml Bottle, 1 x Instruction Manual

| Technical Data         |              | Standard Applied |
|------------------------|--------------|------------------|
| 1. Curing Time         | 20 – 30 Sec. | ISO 29022        |
| 2. Shear Bond Strength | 20 – 30 MPa  |                  |

# RENEW UNIVERSAL

## One Component Self Etch Universal Bonding Agent

Renew Universal is a light-cured single-component dentine bonding agent that combines etching, priming and bonding in one bottle. A novel universal dental adhesive containing a unique combination of functional monomers such as 10-MDP and 4-META. It has excellent bonding capabilities to dentin and cut / un-cut enamel. As a universal adhesive, Renew Universal has been designed to be fully compatible with light-cured and dual-cured composite materials. Renew Universal can be used for the bonding of both direct and indirect restorations and may be used with or without phosphoric acid etchant.



### INDICATIONS

- Direct bonding of light-cured composites, compomers and ormocers to tooth structure.
- Bonding of dual-cured core build up composites to tooth structure as long as these materials are light-cured.
- Treatment of hypersensitive teeth.
- Sealing of tooth preparation (cavity or abutment).

### PRODUCT BENEFITS

- A novel universal dental adhesive containing a unique combination of functional monomers such as 10-MDP and 4-META.
- Intraoral repair of composite, metal-based, ceramic restorations in combination with a silane coupling agent and zirconia/alumina-based restorations.

### PACKAGING

- REF 10017** Intro Pack : 1 x 1.2ml Syringe, 5 x Applicator Tips, 1 x Instruction Manual.
- REF 10018** Regular Pack : 1 x 5ml Bottle, 1 x Instruction Manual.
- REF 10019** Kit Pack : 2 x 5ml Bottle, 40 x Micro Brushes, 1 x Instruction Manual.

| Technical Data         |              | Standard Applied |
|------------------------|--------------|------------------|
| 1. Curing Time         | 20 – 30 Sec. | ISO 29022        |
| 2. Shear Bond Strength | 20 – 30 MPa  |                  |

# MICROGEL SF

## Gel For Enamel Etching And Dentin Conditioning

Green tinted viscous gel of 37% phosphoric acid with silica free composition recommended for use on enamel and dentine.

### INDICATIONS

- For conditioning of both dental enamel and dentine surfaces before placing adhesive restoration

### PRODUCT BENEFITS

- 37% phosphoric acid to give best dentine etching results
- Provides controlled depth of dental etch
- Does not dry etched tooth surface

### PACKAGING

- REF 10010** Intro Pack : 1 x 5ml Syringe, 10 Applicator Tips, 1 x Instruction Manual
- REF 10011** Economy Pack : 4 x 5ml Syringe, 40 x Applicator Tips, 1 x Instruction Manual

| Technical Data     |       |
|--------------------|-------|
| 1. Colour          | Green |
| 2. pH              | < 1   |
| 3. Phosphoric Acid | 37 %  |



# ACTINO GEL / LIQUID

## Dental Etching Gel / Liquid

Blue tinted viscous gel/liquid of 37% phosphoric acid for etching tooth enamel and dentine conditioning or composite surfaces prior to the bonding of any composites, sealants or bonding adhesives.



### INDICATIONS

- For conditioning of both enamel and dentine surfaces before placing adhesive restoration

### PRODUCT BENEFITS

- 37% phosphoric acid to give best dentine etching results
- Provides controlled depth of dental etch
- Does not dry etched tooth surface

### PACKAGING

- REF 10006-1** Trial Pack : 1 x 2ml Syringe, 5 x Applicator Tips, 1 x Instruction Manual
- REF 10006-2** Trial Pack : 1 x 3ml Syringe, 10 x Applicator Tips, 1 x Instruction Manual
- REF 10006** Intro Pack : 1 x 5ml Syringe, 10 x Applicator Tips, 1 x Instruction Manual
- REF 10006-5** Economy Pack : 3 x 3ml Syringe, 30 x Applicator Tips, 1 x Instruction Manual
- REF 10007** Economy Pack : 4 x 5ml Syringe, 40 x Applicator Tips, 1 x Instruction Manual
- REF 10008** Jumbo Pack : 1 x 50ml Syringe, 2 x 5ml Empty Syringe, 20 x Applicator Tips, 1 x Instruction Manual
- REF 10009** Liquid Packing : 1 x 10ml Squeeze Bottle

| Technical Data |      |
|----------------|------|
| 1. pH          | <1   |
| 2. Consistency | 29mm |
| 3. Thickness   | 28µm |



## ADHESIVES, BONDING AGENTS & ETCHANTS PRODUCTS

# MAGMA NT

## Nano Ceramic Universal Restorative

Magma NT, Nano Ceramic Universal restorative is a visible light curing composite designed to use in anterior and posterior restorations. Magma NT is a low shrinkage composite in combination of nano silica and zirconia filler.



| Technical Data          | Standard Applied                      |
|-------------------------|---------------------------------------|
| 1. Curing Time          | 40 Sec.                               |
| 2. Depth of Cure        | 1.0 (Opaque Shade), 1.5 (Other Shade) |
| 3. Compressive Strength | 300 MPa                               |
| 4. Flexural Strength    | 140 – 150 MPa                         |
|                         | ISO 4049                              |

### INDICATIONS

- Direct anterior and posterior restorations
- Core build-ups
- Splinting
- Indirect restorations

### PRODUCT BENEFITS

- Easy handling due to high viscosity
- Very high wear resistance
- High polishability

### PACKAGING

**REF 20002 Master Kit :** 7 x 4g Syringes Regular Shade 1 x 5ml Bottle Fusion Bond 7, 1 x 5ml Bottle Fusion Nano Coat, 1 x 2g Syringe Fusion Flo - A2 Shade, 1 x 4g Syringe Platina Hi-Gloss, 20 x Micro Brushes, 10 x Applicator tips, 1 x Instruction Manual, 1 x Shade Card

**REF 20002-1 Intro Kit :** 4 x 4g Syringes Magma NT, Regular Shade, 1 x 5ml Bottle Fusion Bond 7, 1 x 5ml Bottle Fusion Nano Coat, 20 x Micro Brushes, 1 x Instruction Manual, 1 x Shade Card

**REF 20001 Refills :** 1 x 4g Syringe, 1 x Instruction Manual

**REF 20003 Unit Dose Compules :** 20 x 0.25g Compules, 1 x Instruction Manual

### SHADES

- A1, A2, A3, A3.5, A4, B1, B2, B3, C1, C2, C3, D1, D2, Opaque, Incisal, OA1, OA2, OA3, Bleach, Gingival G1, G2, G3, G4

# FUSION UNIVERSAL

## Light Cured Universal Nano Hybrid Composite

Fusion Universal is visible light cured, radiopaque, highly filled, fine hybrid composite restorative material for all cavity classes of anterior and posterior teeth.



| Technical Data          | Standard Applied                      |
|-------------------------|---------------------------------------|
| 1. Curing Time          | 40 Sec.                               |
| 2. Depth of Cure        | 1.0 (Opaque Shade), 1.5 (Other Shade) |
| 3. Compressive Strength | 300 MPa                               |
| 4. Flexural Strength    | 140 – 150 MPa                         |
|                         | ISO 4049                              |

### INDICATIONS

- Direct restoration of all cavity classes in anterior and posterior teeth
- Preventive resin restoration and repairs of composite ceramic veneers
- Aesthetic corrections
- Core build-up & Composite inlays

### PRODUCT BENEFITS

- Excellent physical properties for long lasting restorations
- Lower polymerization shrinkage than conventional composites
- High filler contents
- Extremely high abrasion resistance

### PACKAGING

**REF 20004 Refills :** 1 x Syringe, 4g, 1 x Instruction Manual

**REF 20005 Intro Kit :** 4 x 4g syringes, 1 x 5ml Fusion Bond 5, 1 x 2ml syringe Actino Gel, 10 x Micro Brushes, 10 x Applicator Tips, 1 x Instruction Manual

**REF 20006 Combo Kit :** 7 x 4g Syringes

**Combo / Intro Kit Accessories :** 1 x 5ml Fusion Bond 5, 1 x 2ml Actino Etching Gel, 10 x Micro Brushes, 10 x Applicator Tips, 1 x Instruction Manual

**REF 20007 Unit Dose Compules :** 20 x 0.25g Compules, 1 x Instruction Manual

### SHADES

- A1, A2, A3, A3.5, A4, B1, B2, B3, C1, C2, C3, D1, D2, Opaque, Incisal, OA1, OA2, OA3, Bleach, Gingival G1, G2, G3, G4

# PF SEAL

## Light Cured Pit and Fissure Sealant

PF SEAL is a light cured sealant which is recommended for prevention of caries by sealing pit and fissure.

### INDICATIONS

- Sealing/Filling of the pit and fissure
- Filling of the small caries
- Filling of the deciduous teeth

### PRODUCT BENEFITS

- New resin formula for strong & long lasting sealant
- Superior pit & fissure sealing ability
- Convenient flow through tips

### PACKAGING

**REF 20012-1** 1 x 2g Syringe, 5 x Applicator Tips, 1 x Instruction Manual

**REF 20012** 2 x 2g Syringe, 10 x Applicator Tips, 1 x Instruction Manual

### SHADES

- Clear, Opaque, Translucent and Tinted

| Technical Data   | Standard Applied |
|------------------|------------------|
| 1. Curing Time   | 40 Sec.          |
| 2. Depth of Cure | 1.5 – 2mm        |
|                  | ISO 6874         |



# FUSION FLO

## Light Cured Nano Hybrid Flowable Composite

Fusion Flo is an excellent flowable composite that delivers high strength & wear resistance. It is characterized by optimum surface affinity, penetrates into most difficult area. It combines esthetics as well as flow on demand handling for use.

### INDICATIONS

- Filling of smaller cavities
- Extended fissure sealing
- Restoration of class III to V cavities
- Repairs of fillings & veneers

### PRODUCT BENEFITS

- Optimal flowability
- Higher filler loading
- Excellent physical properties
- Lower polymerisation shrinkage
- Very good abrasion resistance

### PACKAGING

**REF 20008** Intro Pack : 2 x 2g Syringes, 10 x Applicator Tips, 1 x Instruction Manual

**REF 20009** Combo Kit : 4 x 2g Syringes, 20 x Applicator Tips, 1 x Instruction Manual

**REF 20008-1** Trial Pack : 1 x 2g Syringes, 5 x Applicator Tips, 1 x Instruction Manual

### SHADES

- A1, A2, A3, A3.5, A4, B1, B2, Oa2, OA3, Incisal, Bleach, Gingival G1, G2, G3, G4

| Technical Data          | Standard Applied                      |
|-------------------------|---------------------------------------|
| 1. Curing Time          | 40 Sec.                               |
| 2. Depth of Cure        | 1.0 (Opaque Shade), 1.5 (Other Shade) |
| 3. Compressive Strength | 100 – 120 MPa                         |
| 4. Flexural Strength    | 100 – 120 MPa                         |
|                         | ISO 4049                              |



# FUSION CORE DC FLO

Flowable, Dual Curing, Nano-tech Core Build-Up Composite

Fusion Core DC Flo is a dual cure, radiopaque, two component, core build-up material in a convenient automix delivery syringe. This material flows conveniently, yet stacks without slumping, thus offering easy placement. The dual cure formulation allows complete curing.



### INDICATIONS

- Core build-up, for vital as well as non-vital teeth
- Luting of fibre-reinforced resin posts

### PRODUCT BENEFITS

- Light curing for time saving application
- Additional chemical curing for complete polymerisation
- Low heat development even in bulk application
- Flowable, non slumping formula for convenient placement
- Low shrinkage properties

### PACKAGING

- REF 20011 Intro Pack - Auto Mix :** 1 x 9g Automix Syringe, 10 x Intra-oral Tips, 10 x Endo Tips, 1 x Instruction Manual
- REF 20011-1 Combo Kit :** 1 x 9g Core Build Up Automix Syringe, 1 x 9g Ultra D/C Automix Syringe, 1 x 3ml Bonding Agent, 1 x 3ml Activator, 10 x Intra Oral Tips, 10 x Endo Tips, 10 x Automix Tips, 10 x Micro Brushes, 1 x Instruction Manual

### SHADES

- A1, A2, A3, A3.5, A4, B1, B2, B3, C1, C2, C3, D1, D2, Opaque, Incisal, Oa1, OA2, OA3, Bleach, Gingival G1, G2, G3, G4

| Technical Data       |             | Standard Applied |
|----------------------|-------------|------------------|
| 1. Working Time      | 60 Sec.     | ISO 4049         |
| 2. Setting Time      | 3 - 4 Min   |                  |
| 3. Flexural Strength | 60 - 70 MPa |                  |
| 4. Film Thickness    | 50 µm       |                  |



## COMPOSITES PRODUCTS

# FUSION I-SEAL

Light Curing Glass Ionomer Composite Cement

Fusion I-Seal is a light cured glass ionomer cement for lining, extended fissure sealing and smaller lesions.

### INDICATIONS

- Lining under all kinds of filling materials
- Extended fissure sealing
- Restoration of smaller lesions

### PRODUCT BENEFITS

- Ready to use one component light cured glass ionomer cement
- High compressive strength
- Fluoride release
- Radiopaque
- Fast and easy to apply

### PACKAGING

- REF 30002-1** Trial Pack : 1 x 2g Syringe, 5 x Applicators Tips, 1 x Instruction Manual
- REF 30002** Intro Pack : 2 x 2g Syringes, 10 x Applicators Tips, 1 x Instruction Manual
- REF 30003** Economy Pack : 4 x 2g Syringes, 20 x Applicators Tips, 1 x Instruction Manual
- REF 30003-1** Intro Pack : 1 x 3g Syringe, 10 x Applicators Tips, 1 x Instruction Manual
- REF 30003-2** Kit Pack : 2 x 3g Syringes, 20 x Applicators Tips, 1 x Instruction Manual

| Technical Data       |               | Standard Applied |
|----------------------|---------------|------------------|
| 1. Curing Time       | 30 – 40 Sec.  | ISO 9917-2       |
| 2. Flexural Strength | 100 – 120 MPa |                  |



# CAL LC

Light Cured Radiopaque Calcium Hydroxide Paste

Cal LC is light cured radiopaque calcium hydroxide paste useful in pulp capping and as a protective base/liner under dental filling materials, cements & other base materials.

### INDICATIONS

- For direct & indirect pulp capping
- Acid protection when applying etch technique
- As cavity liner under all filling materials

### PRODUCT BENEFITS

- Time-saving, direct application and light curing
- Ready to use one component material
- Acid Resistant
- Effective protection of the pulp
- Helps formation of secondary dentine
- Excellent adhesion to composites
- High compressive strength
- Low solubility in oral fluids

### PACKAGING

- REF 30004** Trial Pack : 1 x 2g Syringes, 5 Applicator Tips, 1 x Instruction Manual
- REF 30005** Intro Pack : 2 x 2g Syringes, 10 Applicator Tips, 1 x Instruction Manual
- REF 30005-1** Economy Pack : 4 x 2g Syringes, 20 Applicator Tips, 1 x Instruction Manual

| Technical Data       |              | Standard Applied |
|----------------------|--------------|------------------|
| 1. Curing Time       | 30 – 40 Sec. | ISO 9917-2       |
| 2. Flexural Strength | >80 MPa      |                  |



# APACAL ART

## Photo Cure Pulp Protectant / Liner

ApaCal ART is photo cure, resin modified, tricalcium phosphate pulp protectant / liner fortified with hydroxyapatite. It is designed to perform as a barrier and to protect the dentine pulp complex. Its unique, active release technology is useful in pulp capping and as a protective base/liner under dental filling materials, cements and others restorative materials.



### INDICATIONS

- Direct & indirect pulp capping.
- Protective base/liner under composites, amalgam cements and other base materials.

### PRODUCT BENEFITS

- Accelerated release of calcium ions
- Accelerated formation of dentine bridge
- Antibacterial
- Contains barium zirconate for better radioopacity and biocompatibility

### PACKAGING

- REF 30001-1** Trial Pack : 1 x 2g Syringe, 5 x Applicators Tips, 1 x Instruction Manual
- REF 30001** Economy Pack : 2 x 2g Syringe, 10 x Applicators Tips, 1 x Instruction Manual

| Technical Data       |              | Standard Applied |
|----------------------|--------------|------------------|
| 1. Curing Time       | 30 – 40 Sec. | ISO 9917-2       |
| 2. Flexural Strength | >80 MPa      |                  |

# CALULTRA

## Calcium Hydroxide Cavity Liners

CalUltra is a two-component, rigid-setting, self-curing lining material designed for use as a direct and indirect pulp capping agent and a protective liner under dental filling materials, cements and other base materials. It has no effect on the polymerization of composite filling materials



### INDICATIONS

- Direct and Indirect pulp capping agent
- Protective cavity liner under all filling materials

### PRODUCT BENEFITS

- Protective barrier between restorative materials and deep vital dentin.
- Quick setting time
- Excellent handling characteristics
- Protective the pulp and promotes the formation of secondary dentin

### PACKAGING

- REF 40046** Net contents: 24g, Base Paste/Catalyst Paste , 1 x Mixing Pad, 1 x Instructional Manual
- REF 40059** Net contents: 18g, Automix Cartridge, 20 x Mixing Tips, 1 x Instructional Manual
- REF 40060** Net contents: 18g, Manual Mix Cartridge (Base & Catalyst), 1 x Mixing Spatula, 1 x Mixing Pad, 1 x Instructional Manual
- REF 40064** Net contents: 24g, Base Paste/Catalyst Paste, 1 x Mixing Pad, 5 x Applicator Tips, 1 x Instructional Manual

| Technical Data          |        |
|-------------------------|--------|
| 1. Setting Time         | 1 Min. |
| 2. Compressive Strength | 10 MPa |

# FUSION ULTRA D/C

## Dual Curing, Resin Based Luting Cement

Low viscosity, light and chemical cure, radiopaque, two component micro fine hybrid composite for the adhesive luting of composite and ceramic restorations.

### INDICATIONS

- Permanent cementation of crown, bridges and splints
- Permanent cementation of endodontic posts made of metal, reinforced composite
- Permanent cementation of implant retained crowns

### PRODUCT BENEFITS

- Dual curing-light and self curing
- Low film thickness - Low solubility in oral fluids
- 2-stage polymerization allows a fast and easy clean up without compromising working time
- Fully compatible with acrylic and bis-acrylic temporary materials

### PACKAGING

- REF 30006** Intro Pack - Auto Mix : 1 x 9g Automix Syringe, 10 x Automix Tips, 1 x Instruction Manual

### SHADES

- Translucent, A2

| Technical Data       |           | Standard Applied |
|----------------------|-----------|------------------|
| 1. Working Time      | 60 Sec    | ISO 4049         |
| 2. Setting Time      | 3 – 4 Min |                  |
| 3. Flexural Strength | 90 MPa    |                  |
| 4. Film Thickness    | 25 µm     |                  |



# FUSION ULTRA D/C UNIVERSAL

## Dual Curing Self Adhesive Universal Resin Cement

Fusion Ultra D/C Universal Automix is a dual-cure (light- and/or self-cure), radiopaque self-adhesive resin cement designed for cementation of crowns, bridges, inlays, onlays and posts. It is supplied in an automix delivery system which can mix equal amounts of two components.

### INDICATIONS

- Cementation of crowns, bridges, inlays and onlays.
- Cementation of prosthetic restorations on implant abutments and frames.
- Cementation of adhesion bridges and splints.
- Cementation of posts and cores.

### PRODUCT BENEFITS

- Low film thickness - Low solubility in oral fluids
- Automix delivery system makes easy handling
- Self adhesive and provides high bond strength
- Easy mixing and handling along with excess removal
- Low post-operative sensitivities

### PACKAGING

- REF 30007** 1 x 9 g Automix Syringe, 10 x Mixing Tips, 10 x Intraoral Delivery Tips, 1 x Instruction Manual

| Technical Data       |           | Standard Applied |
|----------------------|-----------|------------------|
| 1. Working Time      | 60 Sec    | ISO 4049         |
| 2. Setting Time      | 3 – 4 Min |                  |
| 3. Flexural Strength | 90 MPa    |                  |
| 4. Film Thickness    | 25 µm     |                  |



# FUSION SELF LUTE

## Self Curing / Chemical Curing Resin Based Luting Cement

Self curing/chemical curing resin based composite adhesive luting cement.



### INDICATIONS

- Cementation of indirect restorations (inlays, onlays, crowns, bridges, posts) made of:
  - Metal and metal ceramics
  - All-ceramics
  - Composites

### PRODUCT BENEFITS

- Exceptional handling, especially with excess cement removal
- Durability and reliability with all indirect restorations
- High bond strength and excellent marginal sealing
- Low Solubility
- Simple to use, self adhesive, no primers, silanating or bonding agents needed

### PACKAGING

**REF 30008** Intro Pack : 1 x 9g Automix Syringe, 10 x Automix Tips, 1 x Instruction Manual

| Technical Data    |               | Standard Applied |
|-------------------|---------------|------------------|
| 1. Working Time   | 2 – 2.30 min. |                  |
| 2. Setting Time   | 3 – 4 min.    | ISO 4049         |
| 3. Film Thickness | 35 mm         |                  |

# MICRON SUPERIOR

## Aesthetic Fine Particle Glass Ionomer Restorative Material

Glass ionomer restorative self cure material in handmix version for restoration of primary teeth and core build up.



### INDICATIONS

- Permanent class III, class V restorations and small class fillings
- Restoration of deciduous teeth (especially class I)
- Restoration of smaller lesions
- Primary teeth fillings
- Fissure sealing
- Filling of cervical erosions
- Fillings prior to crown preparation

### PRODUCT BENEFITS

- Self-curing/self adherent
- Different shades to achieve desired natural aesthetics
- Radiopaque and offers strong adhesion to enamel and dentine
- High and continuous fluoride release
- Coefficient of expansion similar to tooth structure

### PACKAGING

**REF 30010** Powder - Liquid Kit : 1 x 15g Powder Jar, 1 x 10ml Liquid Bottle, 1 x Mixing Pad, 1 x Spoon, 1 x Instruction Manual.

**REF 30010-2** Micron Superior GIC Universal Liquid : 1 x 10ml Liquid Bottle, 1 x Instruction Manual.

### SHADES

A1, A2, A3

| Technical Data             |               | Standard Applied |
|----------------------------|---------------|------------------|
| 1. Ratio (Powder / Liquid) | 1 : 1         |                  |
| 2. Mixing Time             | 35 – 40 Sec.  |                  |
| 3. Setting Time            | 1.30 – 2 min. | ISO 9917-1       |
| 4. Compressive Strength    | 145 – 160 MPa |                  |

# MICRON SUPERIOR CAPSULE

## Aesthetic Fine Particle Glass Ionomer Restorative Material In Capsules

Micron Superior capsule is a capsulated, prefilled, radiopaque Glass Ionomer Cement for restoration of primary teeth, core build up, restoration of class III, V and limited class I Cavities.

### INDICATIONS

- Restoration of primary teeth
- Core build up
- Restoration of class III, V and Limited class I cavities

### PRODUCT BENEFITS

- Optimised powder/ liquid ratio
- High wear resistance
- Simple to place, and easy to handle
- Self-curing/self adherent
- Radiopaque and offers strong adhesion to enamel and dentine
- High and sustained fluoride release
- Coefficient of expansion similar to tooth structure

### PACKAGING

**REF 30010-3** 10 x Single Shade Capsules, 1 x Instruction Manual.

### SHADES

A2, A3

| Technical Data          |               | Standard Applied |
|-------------------------|---------------|------------------|
| 1. Mixing Time          | 10 Sec.       |                  |
| 2. Setting Time         | 2 - 2.20 min. | ISO 9917-1       |
| 3. Compressive Strength | 130 - 140 MPa |                  |



# MICRON LUTING

## Translucent Fine Particle Glass Ionomer Luting Cement

Micron Luting is a convenient self curing, fine particle, fluoride releasing, glass ionomer luting cement for crowns, bridges, securing inlays, onlays, post and orthodontic brackets.

### INDICATIONS

- Cementation of inlays, onlays and crowns
- Cementation of posts and screws
- Attachment of metal orthodontic bands

### PRODUCT BENEFITS

- High fluoride release
- Low solubility
- Translucent shade
- Very low film thickness

### PACKAGING

**REF 30011** Powder - Liquid Kit : 1 x 15g Powder Jar, 1 x 10ml Liquid Bottle, 1 x Mixing Pad, 1 x Spoon, 1 x Instruction Manual

| Technical Data             |               | Standard Applied |
|----------------------------|---------------|------------------|
| 1. Ratio (Powder / Liquid) | 1 : 2         |                  |
| 2. Mixing Time             | 45 – 60 Sec.  |                  |
| 3. Setting Time            | 2 Min 30 Sec. | ISO 9917-1       |
| 4. Compressive Strength    | 100 – 120 MPa |                  |
| 5. Film Thickness          | 20 µm         |                  |



# MICRON SILVER

## Radiopaque Silver Alloy-Glass Ionomer Cement, Restorative

Micron Silver is PRE MIXED radiopaque, silver alloy Glass Ionomer Cement for restoration of primary teeth, core build up, restoration of class I, limited class II cavities and as a base and liner material. Micron silver which is reinforced with spherical silver alloy has high compressive strength and adhesion to the tooth. It has excellent tooth adhesion, sustained fluoride release and high compressive strength.



### INDICATIONS

- Restoration of primary teeth
- Cases where radiopacity is required.
- Class I, limited Class II
- Temporary fillings, etc
- Long term temporary replacement of cusps.
- Class V restorations in non-aesthetic situations.
- Restorative in the field using the ART technique.

### PRODUCT BENEFITS

- Intermediate restorative and base material for class I and II cavities using the sandwich technique.
- High Compressive Strength and adhesion to the tooth.
- Packable and condensable like amalgam without mercury.

### PACKAGING

REF 30009 Powder - Liquid Kit : 1 x 15g Powder Jar, 1 x 10ml Liquid Bottle, 1 x Mixing Pad, 1 x Spoon, 1 x Instruction Manual

| Technical Data             | Standard Applied |            |
|----------------------------|------------------|------------|
| 1. Ratio (Powder / Liquid) | 2 : 3            | ISO 9917-1 |
| 2. Mixing Time             | 35 – 40 Sec.     |            |
| 3. Working Time            | 1.30 – 2.00 min. |            |
| 4. Setting Time            | 4 – 5 min.       |            |
| 5. Compressive Strength    | 150 MPa          |            |

# MICRON BIOACTIVE

## Radiopaque Hydroxyapatite Modified-Glass Ionomer Cement, Restorative

Micron Bioactive is a radiopaque, Hydroxyapatite Modified-Glass Ionomer Cement for restoration of primary teeth, core build up, restoration of class I, limited class II cavities and as a base and liner material. Hydroxyapatite provides a positive environment and indirectly decreases the caries susceptibility of individuals. It has excellent tooth adhesion, sustained fluoride release, high compressive strength and mineralizing potential.



### INDICATIONS

- Core build-up.
- Restoration of primary teeth.
- Cases where radiopacity is required.
- Temporary endodontic fillings.
- Class I, limited Class II, temporary fillings, etc.
- As a base or liner.
- Intermediate restoratives and base material for class I and II cavities using the sandwich technique.

### PRODUCT BENEFITS

- Anticariogenic.
- Tooth coloured.
- Accelerated remineralisation.
- Excellent chemical bonding to dentin and enamel.
- Radiopaque for easy post operative diagnosis.

### PACKAGING

REF 30009-1 Powder - Liquid Kit : 1 x 15g Powder Jar, 1 x 10ml Liquid Bottle, 1 x Mixing Pad, 1 x Spoon, 1 x Instruction Manual

| Technical Data             | Standard Applied |            |
|----------------------------|------------------|------------|
| 1. Ratio (Powder / Liquid) | 2 : 3            | ISO 9917-1 |
| 2. Mixing Time             | 35 – 40 Sec.     |            |
| 3. Setting Time            | 1.30 – 2.00 min. |            |
| 4. Compressive Strength    | 150 MPa          |            |

# MICRON DENTIN CONDITIONER

## Polyacrylic Acid Cavity Conditioner

Micron Dentin Conditioner is a mild polyacrylic acid solution designed to remove the dentinal smear layer and to condition dentine, thus enhancing the bond between glass ionomer cement and the dentine.



### INDICATIONS

- Removal of dentinal Smear Layer.
- To Condition the dentine.

### PRODUCT BENEFITS

- Polyacrylic Acid solution enhance the bond between glass ionomer cement and the dentine.
- Micron Dentine Conditioner with low PH value.

### PACKAGING

REF 30010-1 Packaging : 1 x 10ml Liquid Bottle, 1 x Instruction Manual

### Technical Data

|           |         |
|-----------|---------|
| 1. pH     | 1.5 – 2 |
| 2. Colour | Blue    |

# POLY ZINC +

## Zinc Polycarboxylate Cement

Poly Zinc+ is a zinc polycarboxylate cement which chemically bonds to the tooth structure.

### INDICATIONS

- Suitable for cementation of : Crowns, bridges and orthodontic brackets
- Cavity lining under all restoration materials
- Temporary fillings and fillings of deciduous teeth

### PRODUCT BENEFITS

- Chemically bonds to tooth structure and metal appliances
- Extremely low film thickness
- Radiopaque
- High adhesive strength
- Minimal solubility in oral fluids

### PACKAGING

REF 30012 Intro Pack : 1 x 30g Powder Jar, 1 x 15ml Liquid Bottle, 1 x Spoon, 1 x Mixing Pad, 1 x Instruction Manual

REF 30013 Economy Pack : 1 x 120g Powder Jar, 1 x 90ml Liquid Bottle, 1 x Spoon, 1 x Mixing Pad, 1 x Instruction Manual

### Technical Data

| Technical Data          | Standard Applied                               |            |
|-------------------------|--|------------|
| 1. Mixing Time          | 45-60 Sec.                                     | ISO 9917-1 |
| 2. Setting Time         | 2 - 2:15 min. (Luting)<br>2 - 2:10 min. (Base) |            |
| 3. Film Thickness       | 25 µm  |            |
| 4. Compressive Strength | 80 – 100 Mpa (Min.)                            |            |



# ZINC F+

## Zinc Phosphate Cement

Zinc F+ is a zinc phosphate cement which has universal application for crowns and bridges and as a liner/core or base material. Zinc F+ offers an extremely accurate fit with very high mechanical strength.



### INDICATIONS

- Cementation of crowns & bridges, inlays and orthodontic brackets
- Cavity lining under all restorative materials.

### PRODUCT BENEFITS

- Seals dentinal tubules and minimizes post-operative sensitivity
- Low film thickness
- High Compressive strength
- Radiopaque
- Neutralizes the harshness of phosphoric acid
- Apply directly to prepared dentinal tissue

### PACKAGING

**REF 30014** Intro Powder - Liquid Kit : 30g Powder Jar, 15ml Liquid Bottle, 1 x Spoon, 1 x Instruction Manual.

**REF 30014-1** Economy Powder - Liquid Kit : 120g Powder Jar, 90ml Liquid Bottle, 1 x Spoon, 1 x Instruction Manual.

| Technical Data          | Standard Applied                     |            |
|-------------------------|--------------------------------------|------------|
| 1. Mixing Time          | 45-60 Sec.                           | ISO 9917-1 |
| 2. Setting Time         | 3.15 min (Luting)<br>3.10 min (Base) |            |
| 3. Film Thickness       | 22 µm                                |            |
| 4. Compressive Strength | 100 - 120 MPa                        |            |

# ZINCONOL

## Polymer Reinforced ZOE Cement

Intermediate Restorative Material (IRM) for class I and class II restorations.



### INDICATIONS

- As a base under amalgam and non resin restorations
- Temporary restoration in emergency treatments
- Sealing coronal portion of teeth under endodontic treatment

### PRODUCT BENEFITS

- Excellent physical properties due to added unique polymer reinforcing agents
- High compressive strength-High tensile strength
- Low film thickness, low solubility and excellent abrasion resistance
- High strength comparable to zinc phosphate cement

### PACKAGING

**REF 30015** Powder - Liquid Kit : 1 x 15g Powder Jar, 1 x 10ml Liquid Bottle, 1 x Mixing Pad, 1 x Spoon, 1 x Dispensing Dropper, 1 x Instruction Manual

**REF 30015-1** Powder - Liquid Kit : 1 x 75g Powder Jar, 1 x 40ml Liquid Bottle, 1 x Mixing Pad, 1 x Spoon, 1 x Dispensing Dropper, 1 x Instruction Manual

| Technical Data          | Standard Applied |          |
|-------------------------|------------------|----------|
| 1. Mixing Time          | 45-60 Sec.       | ISO 3107 |
| 2. Working Time         | 2 min-30 sec.    |          |
| 3. Setting Time         | 4-6 Min.         |          |
| 4. Compressive Strength | 35 MPa           |          |

# ZINCONOL XS

## Polymer Reinforced ZOE Cement

Zinconol Extra Strong (Zinconol XS) is a polymer reinforced zinc oxide eugenol cement for temporary restoration. The excellent physical properties resulting from the unique polymer reinforcing agents include extra strong intermediate restoration and compressive strength, excellent abrasion resistance and low solubility.



### INDICATIONS

- Intermediate Restorative Material (IRM) for Class I & II restorations
- To seal coronal portion of teeth under endodontic treatment.
- As a base under amalgam and non resin restorations

### PRODUCT BENEFITS

- High compressive strength- high tensile strength
- Excellent abrasion resistance, low solubility
- Excellent handling properties

### PACKAGING

**REF 30022** Powder - Liquid Kit : 1 x 38g Powder Jar, 1 x 14ml Liquid Bottle, 1 x Mixing Pad, 1 x Spoon, 1 x Dispensing Dropper, 1 x Instruction Manual

| Technical Data          | Standard Applied |          |
|-------------------------|------------------|----------|
| 1. Mixing Time          | 45-60 Sec.       | ISO 3107 |
| 2. Working Time         | 2 min-30 sec.    |          |
| 3. Setting Time         | 4-6 Min.         |          |
| 4. Compressive Strength | 60 MPa           |          |

# ZITEMP

## ZOE Cement Quick Set

Easy mix rapid setting zinc oxide - eugenol cement for thermal insulation and temporary restoration.



### INDICATIONS

- Ideal temporary sealant and filling material for cavities after removal of carious dentine before permanent restoration
- Perfect cavity liner
- Temporary fixation of crowns and bridges
- Ideal cavity liner under most restorative materials

### PRODUCT BENEFITS

- Easy mix powder liquid composition
- Rapid setting
- Effective thermal and chemical insulator
- Excellent flowability
- High compressive strength
- Excellent cavity liner compatible under most restorative materials

### PACKAGING

**REF 30016** Powder - Liquid Kit : 1 x 15g Powder Jar, 1 x 10ml Liquid Bottle, 1 x Mixing Pad, 1 x Spoon, 1 x Dispensing Dropper, 1 x Instruction Manual

| Technical Data          | Standard Applied |          |
|-------------------------|------------------|----------|
| 1. Mixing Time          | 45-60 Sec.       | ISO 3107 |
| 2. Setting Time         | 5 - 7 Min.       |          |
| 3. Compressive Strength | 20 - 30 MPa      |          |

# DOLO

## EDTA Gel For Root Canals

Water soluble gel containing 17% EDTA with 10% carbamide peroxide for chemical and mechanical root canal preparation.



### INDICATIONS

- For chemical-mechanical preparation of root canals
- Cleansing and enlarging of calcified root canal
- Contains appropriate lubricant to minimize potential of file breakage

### PRODUCT BENEFITS

- Helps in mechanical as well as chemical cleansing of root canal preparations
- 17% EDTA helps in chelating the calcium salts
- Gel helps lubricate endodontic instrument and makes penetration easier
- 10% carbamide peroxide promotes internal bleaching on irrigation with hypochlorite solution
- Syringe tip delivery. Unsurpassed chelating action

### PACKAGING

- REF 40002** Trial Pack : 1 x 2g Syringe, 5 x Applicator Tips, 1 x Instruction Manual
- REF 40002-1** Intro Pack : 1 x 3g Syringe, 10 x Applicator Tips, 1 x Instruction Manual
- REF 40003** Economy Pack : 4 x 2g Syringes, 20 x Applicator Tips, 1 x Instruction Manual

### Technical Data

|                   |       |
|-------------------|-------|
| 1. pH             | 3 - 4 |
| 2. Consistency    | 30 mm |
| 3. Film Thickness | 58 µm |

# EDTA SOLUTION

## 17% EDTA Solution

Disodium Edetate solution with neutral pH for chemical, mechanical cleansing and enlarging of root canals.



### INDICATIONS

- Rapid root canal cleansing and shaping during instrumentation
- Helpful in opening calcified root canals

### PRODUCT BENEFITS

- 17% solution and neutral pH cleanses root canals rapidly
- Helpful in enlarging of canals

### PACKAGING

- REF 40004** 1 x 15 ml Glass Bottle, 1 x Dispensing Dropper, 1 x Instruction Manual
- REF 40004-1** 1 x 100 ml Glass Bottle, 1 x Dispensing Dropper, 1 x Instruction Manual

### Technical Data

|       |      |
|-------|------|
| 1. pH | 7.25 |
|-------|------|

# CITROGEN GEL

## 20% Citric Acid Gel

Citrogen is a 20% citric acid gel. Used as a chelating agent for removal of smear layer and conditioning of dentine surfaces. It irrigates, cleans and conditions root canal walls.



### INDICATIONS

- Conditioning of prepared root canal systems
- Removes mineral and smear layers
- Lubrication during root canal preparation
- Conditioning of dentine surfaces

### PRODUCT BENEFITS

- Promotes the repair of periodontal lesions
- Prevents the appearance of long junctional epithelial attachments
- Detoxification of implant surface affected by Peri-Implantitis
- Syringe for direct application

### PACKAGING

- REF 40045** 1 x 10ml Syringe, 5 x Applicator Tips, 1 x Instructional Manual
- REF 40045-1** 1 x 30ml Syringe, 10 x Applicator Tips, 2 x 5ml Empty Syringe, 1 x Instructional Manual

### Technical Data

|       |         |
|-------|---------|
| 1. pH | 1.5 - 2 |
|-------|---------|

# CITROGEN

## (20% Citric Acid Liquid) Dentine Conditioner and Chelating Agent

Citrogen is a 20% Citric Acid liquid used as a Chelating agent for removal of smear layer and conditioning of dentine surfaces.



### INDICATIONS

- Conditioning of prepared root canal systems.
- Removes mineral and smear layers
- Lubrication during root canal preparation
- Conditioning of dentine surfaces

### PRODUCT BENEFITS

- Effective smear layer removal
- Safe and easy application
- Enhances mechanical cleaning of root canal

### PACKAGING

- REF 40047** 1 x 50ml Bottle, 1 x Dropper, 1 x Instruction Manual
- REF 40048** 1 x 100ml Bottle, 1 x Dropper, 1 x Instruction Manual

### Technical Data

|       |      |
|-------|------|
| 1. pH | 1.75 |
|-------|------|

# CALPLUS

## Calcium Hydroxide Paste With Iodoform

Premixed Calcium hydroxide paste containing iodoform with improved radiopacity and antimicrobial effect.



### INDICATIONS

- For direct & indirect pulp capping and pulpotomy
- Apexifications and hard tissue formations
- Temporary filling material for infected root canals
- Treatment of root resorption
- Acid protection when applying etch technique
- Perfect cavity liner under all filling materials

### PRODUCT BENEFITS

- Non hardening paste with oil base
- Prolonged release of calcium hydroxide helps create secondary dentine
- Excellent biocompatibility with no toxic effects on cells
- Easy handling and easy direct application
- Ideal for infected root canals and vital pulpotomies in deciduous teeth.
- Can be used in conjunction with gutta percha points and regular root canal sealants

### PACKAGING

- REF 40005** Trial Pack : 1 x 2g Syringe, 5 x Applicator Tips, 1 x Instructional Manual
- REF 40005-1** Intro Pack : 1 x 3g Syringe, 10 x Applicator Tips, 1 x Instructional Manual
- REF 40006** Economy Pack : 4 x 2g Syringes, 20 x Applicator Tips, 1 x Instructional Manual

| Technical Data    |       |
|-------------------|-------|
| 1. Consistency    | 28 mm |
| 2. Film Thickness | 68 µm |

# CALCIUM HYDROXIDE

## Powder, Extra Fine

Calcium Hydroxide Powder when mixed with deionized water becomes a smooth paste to be used as a dressing for apexification procedures, direct & indirect pulp capping and as a sub base under restoration.



### INDICATIONS

- Direct & indirect pulp capping.
- Sub base under restoration.
- Dressing for apexification procedures.
- Thermal insulation

### PRODUCT BENEFITS

- Can be easily removed from root canal by simple irrigation
- Highly compatible with oral tissues

### PACKAGING

- REF 40029** 1x 10g Plastic Jar

| Technical Data |       |          |
|----------------|-------|----------|
| 1. Mesh        | 200#  | ISO 6876 |
| 2. Resing      | 99.9% |          |

# CALCIGEL

## All Purpose Calcium Hydroxide Paste

Premixed water based radiopaque calcium hydroxide paste with barium sulphate for endodontic indications.



### INDICATIONS

- Apexogenesis
- Apexification
- Temporary root canal filling
- Internal & external root resorption

### PRODUCT BENEFITS

- High pH (pH 12) helps neutralize free acids of obturating cements and restorative materials
- Reduces hypersensitivity of dentine
- 45% calcium hydroxide content helps in the neoformation of secondary dentine.
- Radiopacity
- Perfect pulp protection
- Syringe for direct application

### PACKAGING

- REF 40007** Trial Pack : 1 x 2g Syringe, 5 x Applicator Tips, 1 x Instruction Manual
- REF 40007-1** Intro Pack : 1 x 3g Syringe, 10 x Applicator Tips, 1 x Instruction Manual
- REF 40007-2** Trial Pack : 1 x 2.2g Syringe, 20 x Applicator Tips, 1 x Instruction Manual
- REF 40008** Economy Pack : 4 x 2g Syringes, 20 x Applicator Tips, 1 x Instruction Manual

| Technical Data    |         |
|-------------------|---------|
| 1. Consistency    | 40 mm   |
| 2. Film Thickness | 20 µm   |
| 3. Setting Time   | 35 Min. |
| 4. pH             | 11.97   |

# CERAFILL RCS

## Bioceramic Root Canal Filling and Sealing Material

Cerafill RCS root canal filling and sealing material is a ready to use injectable premixed filling and sealing material which is based on the bioceramic technology. It is a alumina free calcium silicate based material with excellent handling characteristics and superior physical properties. It is a radiopaque material which requires water to set and harden.



### INDICATIONS

- Permanent root canal obturation
- Root canal sealer

### PRODUCT BENEFITS

- Bioceramic technology for optimal results
- Permits adequate working time.
- Syringe for direct application
- Optimal flowability allows the sealer to fill difficult access areas
- The antimicrobial property increases the success rate of endodontic treatments
- Radiopaque
- Non resorbable

### PACKAGING

- REF 40061** Trial Pack: Trial Pack : 1 x 0.5g Premixed Syringe, 03 x Capillary Tips, 1 x Instruction Manual.
- REF 40037** Trial Pack: 1 x 1.2g Premixed Syringe, 10 x Capillary Tips, 1 x Instruction Manual.
- REF 40037-1** Regular Pack: 1x 2g Premixed Syringe, 10 x Applicator Tips, 1 x Instruction Manual.
- REF 40037-2** Regular Pack: 1x 2g Premixed Syringe, 10 x Applicator Tips, 1 x Instruction Manual.
- REF 40057** Regular Pack: 1x 3g Premixed Syringe, 10 x Applicator Tips, 1 x Instruction Manual.

# CERAFILL PUTTY

## Bioceramic material for permanent root repair

Cerafill Putty is a ready-to-use, premixed, bioceramic paste developed for pulp capping, permanent root repair and Permanent Obturation / Filling of root canals. It is an insoluble, radiopaque composition, which requires the presence of water to set and harden.

### INDICATIONS

- Pulp Capping
- Permanent Obturation / Filling of root canals
- Repair of Root Perforation
- Repair of Root Resorption
- Root End Filling
- Apexification

### PRODUCT BENEFITS

- Ideal putty consistency
- Extremely resistant to washout
- Superior handling properties
- Excellent radiopacity and increases strength

### PACKAGING

- REF 40069** 1 x 0.5g Premixed Syringe, 1x Instruction Manual, 1 x Instruction Manual
- REF 40049** 1 x 1.2g Premixed Syringe, 7 x Applicator Tips, 1 x Instruction Manual
- REF 40049-1** 1 x 2g Premixed Syringe, 10 x Applicator Tips, 1 x Instruction Manual



# MTA PLUS

## Vital Pulp Therapy & Root Treatment Material

MTA Plus is a specialized dental cement derived from advanced material research in inorganic hydraulic powder technology. MTA Plus is indicated for both vital pulp therapy and Endodontic procedures.

### INDICATIONS

- Cavity lining/base & Pulp-capping
- Pulpotomies & Obturation/Sealing
- Apexification & Root-end filling
- Perforation healing & Root resorption

### PRODUCT BENEFITS

- Finer powder for smoother, easier mixing, handling and placement
- Handy packaging-protects powder in desiccant-lined container
- Dispense powder as needed
- Optional gel for stability and washout resistance
- Non-cytotoxic & anti-microbial in vitro against common bacteria and E. Faecalis
- No special equipment or dispensing instruments needed

### PACKAGING

- REF 40024** Trial Pack : 1 x 1g powder Jar, 1 x 2cc Gel Bottle, 1 x Measuring spoon, 1 x Instruction Manual
- REF 40025** Intro Pack : 1 x 2g powder Jar, 1 x 2cc Gel Bottle, 1 x Measuring spoon, 1 x Instruction Manual
- REF 40032** Economy Pack : 1 x 6g powder Jar, 1 x 9cc Gel Bottle, 1 x Measuring spoon, 1 x Instruction Manual
- REF 40053** MTA PLUS AQUA : 1 x 0.14g Powder, 1 x 1ml Liquid, 1 x Instruction Manual

| Technical Data    | Standard Applied |
|-------------------|------------------|
| 1. Mixing Time    | 45 – 60 sec.     |
| 2. Working Time   | 25 Min.          |
| 3. Setting Time   | 55 Min 30 Sec.   |
| 4. Film Thickness | 45 µm            |
| 5. Solubility     | < 2              |
|                   | ISO 6876         |



# CALAPEX

## Non-eugenol, Calcium Hydroxide Based Polymeric Root Canal Sealant

CalApex is an insoluble calcium hydroxide cement for the permanent obturation of root canals in combination with gutta-percha points. It is a two-component, base and activator system supplied in two tubes or in a Cartridge.

### INDICATIONS

- Permanent obturation after pulp extirpation and chemomechanical preparation

### PRODUCT BENEFITS

- Radio opaque
- Ideal for infected root canals
- Non shrinking formulation
- Excellent physical and biological properties

### PACKAGING

- REF 40041** 1 x 20g Automix Cartridge, 20 x Mixing Tips, 1 x Instruction Manual.
- REF 40041-1** Net Content 20g, 1 x Base Paste, 1 x Catalyst Paste, 1 x Mixing Pad, 1 x Instruction Manual.
- REF 40041-2** 1 x 20g Manual Mix Cartridge, Base & Catalyst, 1 x Mixing Spatula, 1 x Mixing Pad, 1 x Instruction Manual.

| Technical Data    | Standard Applied |
|-------------------|------------------|
| 1. Mixing Time    | 30 Sec.          |
| 2. Working Time   | 30 Min.          |
| 3. Setting Time   | 45 - 60 Min.     |
| 4. Flow           | 17 mm            |
| 5. Solubility     | > 2%             |
| 6. Film Thickness | 45 µm            |
|                   | ISO 6876         |



# ZICAL

## ZOE Root Canal Sealer

Zical is a zinc oxide-eugenol based paste for the permanent obturation of root canals in combination with gutta percha.

### INDICATIONS

- Root canal sealing using gutta purcha points

### PRODUCT BENEFITS

- Based on Grossman's formula
- Radiopaque and non staining
- Excellent thermal insulation
- Adequate working time
- Excellent lubricating qualities
- Low zinc alleviate cytotoxic and inflammatory effects of the tissues
- Accurate Proportions

### PACKAGING

- REF 40009** Powder Liquid Kit : 1 x 15g Powder Jar, 1 x 10ml Liquid Bottle, 1x Spoon, 1 x Mixing Pad, 1 x Dispensing Dropper, 1 x Instruction Manual
- REF 40010** Automix Mix Kit : 1 x 15g Cartridge (Base / Catalyst), 20 x Auto Mix Tips, 1 x Instruction Manual
- REF 40011** Manual Mix Kit : 1 x 15g Cartridge (Base / Catalyst), 1 x Mixing Spatula, 1 x Mixing Pad, 1 x Instruction Manual

| Technical Data    | Standard Applied |
|-------------------|------------------|
| 1. Mixing Time    | 30 Sec.          |
| 2. Working Time   | 30 Min.          |
| 3. Setting Time   | 45 - 60 Min.     |
| 4. Flow           | 17 mm            |
| 5. Solubility     | > 2%             |
| 6. Film Thickness | 45 µm            |
|                   | ISO 6876         |



# ZICAL ULTRA P/L

## ZOE Root Canal Sealer

Zical ultra is a ZOE based sealer for permanent filling of dental root canals. Can tightly seal the apex of the root and the prepared root canal and can be easily removed with Gutta Percha point when refilling is necessary. Very long working time and excellent lubricating qualities.



### INDICATIONS

- Root canal filling for infected root canal treatment
- Root canal sealing using Gutta-Percha points

### PRODUCT BENEFITS

- Based on Grossman's Formula
- Radio opaque
- Non-staining and non-irritating
- Excellent thermal insulation
- Excellent lubricating qualities
- Adequate working time

### PACKAGING

**REF 40044** Powder Liquid Kit : 1 x 15g Powder Jar, 1 x 10ml Liquid Bottle, 1 x Spoon, 1 x Mixing Pad, 1 x Dispensing Dropper, 1 x Instruction Manual

| Technical Data    |              |          |
|-------------------|--------------|----------|
| 1. Mixing Time    | 30 Sec.      | ISO 6876 |
| 2. Working Time   | 30 Min.      |          |
| 3. Setting Time   | 45 - 60 Min. |          |
| 4. Flow           | 17 mm        |          |
| 5. Solubility     | > 2%         |          |
| 6. Film Thickness | 45 µm        |          |

# ZICAL ULTRA

## ZOE Root Canal Sealer(Automix / Manual Mix Cartridge)

Zical ultra Root Canal Sealer is a ZOE based zinc oxide-eugenol sealer in paste-paste form for permanent filling of root canals. This sealer has been specially designed to tightly seal the apex of the root and the prepared root canal.



### INDICATIONS

- Root canal filling for infected root canal treatment
- Root canal sealing using Gutta-Percha points

### PRODUCT BENEFITS

- Radio opaque
- Non-staining and non-irritating
- Excellent thermal insulation
- Excellent lubricating qualities
- Easy manipulation and application

### PACKAGING

**REF 40043** Auto Mix Pack: 1 x 15g Automix Cartridge, 20 x Automix Tips, 1 x Instructional Manual

**REF 40042** Manual Mix Pack: 1 x 15g Cartridge, Base & Catalyst Paste, 1 x Mixing Spatula, 1 x Mixing Pad, 1 x Instructional Manual

| Technical Data    |              | Standard Applied |
|-------------------|--------------|------------------|
| 1. Mixing Time    | 30 Sec.      | ISO 6876         |
| 2. Working Time   | 30 Min.      |                  |
| 3. Setting Time   | 45 - 60 Min. |                  |
| 4. Flow           | 17 mm        |                  |
| 5. Solubility     | > 2%         |                  |
| 6. Film Thickness | 45 µm        |                  |

# ENDOSEAL

## Root Canal Obturation Cement

Endoseal is radiopaque, non-resorbable paste for the permanent obturation of the root canal. Its composition is well tolerated by the tissues and provides anti-inflammatory, antiseptics and germicidal actions.



### INDICATIONS

- Permanent root canal filling and sealing in dental procedures with systematic insertion of points

### PRODUCT BENEFITS

- Perfect root canal filling material
- Long lasting antiseptic and anti-inflammatory activity
- Radiopaque
- Perfect marginal sealing
- Non resorbable

### PACKAGING

**REF 40031** Powder Liquid Kit : 1 x 15g Powder Jar, 1 x 10ml Liquid Bottle, 1 x Spoon, 1 x Mixing Pad, 1 x Dispensing Dropper, 1 x Instruction Manual

**REF 40031-1** Powder Liquid Kit : 1 x 20g Powder Jar, 1 x 10ml Liquid Bottle, 1 x Spoon, 1 x Mixing Pad, 1 x Dispensing Dropper, 1 x Instruction Manual

| Technical Data    |                  | Standard Applied |
|-------------------|------------------|------------------|
| 1. Mixing Time    | 45 - 60 Sec.     | ISO 6876         |
| 2. Working Time   | 25 Min.          |                  |
| 3. Setting Time   | 55 Min - 30 Sec. |                  |
| 4. Flow           | 48 µm            |                  |
| 5. Solubility     | > 2%             |                  |
| 6. Film Thickness | 20 - 25 mm       |                  |

# NANOSEAL-S

## VPS Root Canal Sealer

NanoSeal-S is a cold flowable polydimethylsiloxane based root canal sealer with micro silver.

### INDICATIONS

- Root canal sealing using gutta purcha points

### PRODUCT BENEFITS

- Radiopaque and eugenol free
- Excellent flow
- Expands by 0.2% to give a tight seal

### PACKAGING

**REF 40001-1** Manual Mix : 1 x 10g Cartridge (Base / Catalyst), 1 x Mixing Spatula, 1 x Mixing Pad, 1 x Instruction Manual

| Technical Data    |              | Standard Applied |
|-------------------|--------------|------------------|
| 1. Mixing Time    | 45 - 60 sec. | ISO 6876         |
| 2. Working Time   | <10 Min.     |                  |
| 3. Setting Time   | 10 - 15 Min. |                  |
| 4. Film Thickness | 65 mm        |                  |
| 5. Solubility     | < 2%         |                  |



# HYPOSOL

## 3%, 5% Sodium Hypochlorite Solution

The perfect solution for the irrigation, debridement and disinfection of root canals during endodontic treatment



### INDICATIONS

- For disinfection of root canals
- To irrigate canals after filling with appropriate chelating agent

### PRODUCT BENEFITS

- Irrigates root canal
- Helps debride root canal
- Disinfects root canal during instrumentation

### PACKAGING

- REF 40019** 1 x 500ml Plastic Bottle, 3%
- REF 40020** 1 x 500ml Plastic Bottle, 5%

### Technical Data

|       |       |
|-------|-------|
| 1. pH | 12.10 |
|-------|-------|

# PULP-X

## Pulp Devitalizer

Pulp-X is a preparation for devitalization of the pulp.



### INDICATIONS

- For Pulp devitalization
- For residual devitalization after removal of non-vital pulp tissue

### PRODUCT BENEFITS

- Fast acting-pain releasing formula

### PACKAGING

- REF 40021** Jar Pack : 1 x 6g Plastic Jar, 1 x Instructional Manual
- REF 40022** 1 x 3g Syringe, 10 x Applicator Tips, 1 x Instructional Manual
- REF 40022-1** 2 x 3g Syringe, 10 x Applicator Tips, 1 x Instructional Manual

# CARVENE

## Gutta Percha Solvent

d-Limonene based gutta percha solvent for removing gutta percha at the time of root canal re-treatment.



### INDICATIONS

- To remove all types of root canal filling materials including Zinc Oxide-Eugenol cement
- As a disinfectant/cleaner for endodontic instruments
- For removing gutta percha at the time of root canal re-treatments

### PRODUCT BENEFITS

- Non hazardous/non carcinogenic
- Less volatile
- Based on natural substances (d-limonene) it, does not cause irritation to oral mucosa and periapical tissue
- Evaporation of solvent is less due to low volatility

### PACKAGING

- REF 40030** 1 x 10ml Glass Bottle, 1 x Dispensing Dropper, 1 x Instruction Manual.

# EPOSOLV

## Solvent For Resin & Phenolic Compounds

EpoSolv solvent is used for removing of resin sealers and phenolic compounds at the time of root canal re-treatment.



### INDICATIONS

- EpoSolv is a solvent for epoxy and other resin sealers during endodontic re-treatment.
- EpoSolv aids in the softening of phenolic resin type fillings.

### PRODUCT BENEFITS

- EpoSolv does not provoke excessive salivation if it comes into contact with the mucosa.
- It has low volatility due to presence of formamide.

### PACKAGING

- REF 40035** 1 x 15ml Glass Bottle, 1 x Dispensing Dropper, 1 x Instruction Manual

| Technical Data            |      | Standard Applied |
|---------------------------|------|------------------|
| 1. Total Fluoride Content | 13 % | ISO 17730        |

# FORMACRESOL

## Tricresol Formaldehyde Solution

Powerful pulp devitalizer and disinfectant for severely infected root canals.



### INDICATIONS

- Treatment of severely infected root canals
- Effective pulp devitalizer and disinfectant
- Root canal dressing

### PRODUCT BENEFITS

- Strong antibacterial properties makes it efficient in vital pulpotomy
- Effective in treatment of severely infected root canals

### PACKAGING

**REF 40014** 1 x 15ml Glass Bottle, 1 x Dispensing Dropper, 1 x Instruction Manual.

# CAMPHENOL

## Camphorated Para Chlorophenol Solution

Active disinfectant for the treatment of infected root canals and periapical infections.



### INDICATIONS

- Disinfection of the dentine after cavity preparation
- Disinfection after pulpectomy and pulp dressing
- Treatment of post traumatic inflammation
- Disinfection of root canal

### PRODUCT BENEFITS

- Actively disinfects infected root canal
- Effectively cures periapical infections
- Oily composition helps it remain active for long period

### PACKAGING

**REF 40015** 1 x 15ml Glass Bottle, 1 x Dispensing Dropper, 1 x Instruction Manual.

# ZINC OXIDE / EUGENOL

## Zinc Oxide Powder / Eugenol

Extra pure, Arsenic free Zinc Oxide Powder and Eugenol oil to be used as obtundent for the relief of minor dental pain and to form sedative dental dressing with zinc oxide.

### INDICATIONS

- Used as Root canal sealer with G P cones
- Used for temporary dressing
- Mixed with eugenol and is used as a temporary cement. Eugenol Oil is used for temporary relief of localized dental pain.
- Ideal cavity liner under most restorative materials

### PRODUCT BENEFITS

- Chemically pure Eugenol Oil with increased effectiveness.
- Arsenic free.
- Makes a smooth paste with eugenol.
- Provides sufficient compressive strength.
- Forms a sedative dressing or lining under non composite resin.

### PACKAGING

#### Zinc Oxide

**REF 40028** 1 x Jar, 110g, 1 x Instruction Manual

#### Eugenol

**REF 40016** 1 x 15ml Glass Bottle, 1 x Dispensing Dropper, 1 x Instruction Manual

**REF 40017** 1 x 30ml Glass Bottle, 1 x Dispensing Dropper, 1 x Instruction Manual

**REF 40018** 1 x 110ml Glass Bottle, 1 x Dispensing Dropper, 1 x Instruction Manual

| Technical Data               | Standard Applied     |          |
|------------------------------|----------------------|----------|
| 1. Mixing Time               | 60 sec.              | ISO 3107 |
| 3. Setting Time              | 4 - 6 Min.           |          |
| 4. Compressive Strength      | 20 MPa               |          |
| 5. Acid Soluble Arsenic free | 2 mg/kg <sup>3</sup> |          |



# MAXGENOL

## Liquid for temporary cementation with zinc oxide

Has an obtundent effect and reacts with zinc oxide to form a temporary cement for sedative dental dressing or lining under non-composite resin restoration.

### INDICATIONS

- For temporary relief of localized dental pain
- Combined with Zinc Oxide to form a temporary sedative dressing

### PRODUCT BENEFITS

- Relieves localized pain
- Makes a smooth paste with zinc oxide
- Forms a sedative dressing with zinc oxide
- High fluidity for easy application
- Improved setting properties

### PACKAGING

**REF 40038** 1x 15ml Glass Bottle, 1 x Dispensing Dropper, 1 x Instruction Manual

**REF 40039** 1x 30ml Glass Bottle, 1 x Dispensing Dropper, 1 x Instruction Manual

**REF 40040** 1x 110ml Glass Bottle, 1 x Dispensing Dropper, 1 x Instruction Manual



# CHLOR X

## 2% Chlorhexidine Solution

Chlor X is a chlorhexidine digluconate based water - alcoholic solution for irrigation and cleaning of root canals.



### INDICATIONS

- For disinfection of root canals
- It is choice of irrigant while performing retreatment root canal procedures
- It is indicated as an irrigant in apical 3rd root before retrograde filling during apicoectomy (root end surgery)
- It is a potent irrigant while treating internal/external resorption cases
- It is widely used before sealing (corona/reticular) perforation in the tooth

### PRODUCT BENEFITS

- It is highly biocompatible to oral tissue
- It is known for its pleasant odour & taste
- It is largely accepted in uncooperative pediatric patients
- Non Irritating, well tolerated by periapical tissues

### PACKAGING

- REF 40026** 1 x 100ml Bottle, 1 x Dispensing Dropper, 1 x Instruction Manual
- REF 40026-1** 1 x 500ml Bottle, 1 x Dispensing Dropper, 1 x Instruction Manual

| Technical Data | Standard Applied  |
|----------------|-------------------|
| 1. Appearance  | Clear Blue Liquid |
| 2. Consistence | 2% Chlorhexidine  |

# CHLOR X GEL

## 2% Chlorhexidine Solution

Chlor-X Gel is a lightly flavoured gel containing 2 % chlorhexidine.



### INDICATIONS

- Disinfection of root canal systems.
- Disinfection of tooth surface prior to crown cementation, luting and direct restorative placement.

### PRODUCT BENEFITS

- Non irritating and biocompatible with oral tissues
- User friendly and Non staining
- Chemically stable with pleasant odor

### PACKAGING

- REF 40026-2** 1 x 2g Syringe Chlor-X Gel, 5 x Applicator Tips, 1 x Instruction Manual

| Technical Data | Standard Applied     |
|----------------|----------------------|
| 1. Appearance  | Light Green Gel      |
| 2. Consistence | 2% Chlorhexidine Gel |

# 5 STEP ENDO SMART KIT

## 5-Steps Systematic Endodontic Treatment Kit For Predictable & Efficient Endodontics.

This kit has been designed by endodontic experts to cater to the need of clinicians practicing endodontics. The kit is a one stop solution for predictable endodontics. The products have been thoroughly researched to deliver superior performance.

### INDICATIONS

- A comprehensive material kit for endodontic treatment.

### PRODUCT BENEFITS

- Systematic endodontic treatment kit for predictable & efficient endodontics.

### PRODUCT DETAILS

- CALCIGEL : Calcium Hydroxide Paste with Barium Sulphate.
- CALPLUS : Calcium Hydroxide Paste containing Iodoform.
- PULP-X : Powerful pulp devitalizer.
- ORAFIL-LC : Resin based temporary cement.
- ZICAL : Zinc oxide eugenol based in paste form.

### PACKAGING

- REF 40036** 1 x 2g Syringe Calcigel, 5 x Applicator Tips (Ref : 40007), 1 x 2g Syringe Calplus, 5 x Applicator Tips (Ref : 40005), 1 x 2g Syringe Dolo, 5 x Applicator Tips (Ref : 40002), 1 x 3g Syringe Pulp-X, 5 x Applicator Tips (Ref : 40022), 1 x 3g Syringe Orafil-LC (Ref : 11002-1), 1 x 2g Syringe Chlor X Gel, 5 x Applicator Tips (Ref : 40026-2), 1 x 15g Cartridge Zical Automix, Base & Catalyst Paste, 10 x Automix Tips (Ref : 40010), 1 x Instruction Manual



## ENDODONTIC PRODUCTS

# FUSION CRYSTA ORTHODONTIC ADHESIVE KIT

## Light Cure Orthodontic Kit

Fusion Crysta Orthodontic Adhesive Kit is a light curing composite kit. It is used to Bond Metal & Ceramic brackets to tooth surface and for cementation of molar bands.



### INDICATIONS

- Used for Bonding Metal & Ceramic brackets to tooth surface and for cementation of molar bands.

### PRODUCT BENEFITS

- Highly translucent adhesive designed to compliment traditional and LED curing lights
- Superior physical properties
- The primer contains the revolutionary 10-MDP
- MDP promotes physical and chemical adhesion
- High enamel bond strengths
- Excellent handling properties

### PACKAGING

- REF 10022** Trial Pack : 1x 4g Syringes, 1 x Instruction Manual  
**REF 10023** Intro Pack : 2 x 4g Syringes, 1 x Instruction Manual  
**REF 10024** MDP Orthodontic Kit : 1 x 4g Syringe Fusion Crysta Adhesive, 1x 5ml Bottle Fusion Crysta Adhesive Primer, 1 x 5ml Syringe Actino Gel + 10 Applicator Tips, 1 x Instruction Manual.  
**REF 10024-1** REGULAR Orthodontic Kit : 1 x 4g Syringe, Fusion Crysta Adhesive, 1 x 5ml Bottle, Fusion Bond 5, 1 x 5ml Syringe, Actino Gel, 10 x Applicator Tips, 1 x Instruction Manual

| Technical Data       | Standard Applied |                 |
|----------------------|------------------|-----------------|
| 1. Flexural Strength | 60 - 90 MPa      | ISO 4049, 29022 |

# FUSION CRYSTA ADHESIVE PRIMER

## Light Cured Self Etch Orthodontic Primer

Fusion Crysta Adhesive Primer is a light-cured single-component orthodontic primer that combines etching, priming and bonding in one bottle. It is an ethanol water based dental adhesive containing 10- Methacryloyloxydecyl Dihydrogen Phosphate (10-MDP), a functional monomer which helps in bonding to dentin and enamel.



### INDICATIONS

- Used for adhesion of orthodontic brackets when used along with an adhesive

### PRODUCT BENEFITS

- Single bottle with etch, prime & bond provide clinically acceptable bond strength
- The primer contains the revolutionary 10-MDP
- (10-MDP) a functional monomer which helps in bonding to dentin, cut and un-cut enamel.
- MDP promotes physical and chemical adhesion
- No post operative sensitivity
- High bond strength and durability

### PACKAGING

- REF 10021** Regular Pack : 1 x 5ml Bottle, 5 x Mixing Wells, 10 x Micro Brushes  
 1 x Instruction Manual.

| Technical Data   | Standard Applied |           |
|------------------|------------------|-----------|
| 1. Bond Strength | 20 Mpa           | ISO 29022 |

# FUSION CRYSTA ADHESIVE

## LIGHT CURE ORTHODONTIC ADHESIVE

Fusion Crysta Adhesive bonds metal and ceramic brackets to tooth surfaces providing adequate working time for accurate brackets placement. Highly translucent adhesive designed to compliment traditional and LED curing lights.

### INDICATIONS

- Indicated for metal and ceramic orthodontic brackets and bands to be bonded.

### PRODUCT BENEFITS

- Highly translucent adhesive designed to compliment traditional and LED curing lights
- Excellent handling properties
- Better enamel bond strength

### PACKAGING

- REF 10022** 1 x 4g Syringe, 1 x Instruction Manual.  
**REF 10023** 2 x 4g Syringe, 1 x Instruction Manual.

| Technical Data       | Standard Applied |  |
|----------------------|------------------|--|
| 1. Curing Time       | 40 sec           |  |
| 2. Flexural Strength | 120 MPa          |  |
| 3. Film Thickness    | >50 μm           |  |



## ORTHODONTIC PRODUCTS

# PLATINA HI-GLOSS

## Composite Polishing Paste

Platina Hi-Gloss is an aluminium oxide paste for final polishing of direct or indirect anterior and posterior resin restorative materials. It contains potassium nitrate topical desensitizer for patient comfort.



### INDICATIONS

- Final polishing of composite restorations or veneers

### PRODUCT BENEFITS

- Non splatter-non drying formula
- Spearmint flavored
- With potassium nitrate topical desensitizer

### PACKAGING

REF 50001 1 x 4g Syringe, 1 x Instruction Manual

### Technical Data

|                   |        |
|-------------------|--------|
| 1. Consistency    | 29 mm. |
| 2. Film Thickness | 60 µm  |

# SPECTRA

## Prophylaxis Paste

Spectra is an abrasive paste used for polishing and fluoridation after scaling. It's mechanical action produces a smooth surface without eroding the dental enamel. It is also used for polishing fillings and removal of tobacco & food stains. The different flavours added produce a fresh, pleasant tingling sensation and relieves the irritation caused by mechanical action of the scaling.



### INDICATIONS

- Polishing after scaling
- Removal of dental tartar

### PRODUCT BENEFITS

- Oil free formulation
- Fluoride release formula
- Splatter free paste
- Excellent stain removal and polishing
- Available in five different flavors with fine, medium & coarse grit

### PACKAGING

REF 50005 1 x 200g Plastic Jar, (Fresh Mint), 1 x Instruction Manual  
 REF 50005-1 1 x 340g Plastic Jar, (Fresh Mint), 1 x Instruction Manual  
 REF 50006 1 x 75g Plastic Jar, (Fresh Mint), 1 x Instruction Manual  
 REF 50007 1 x 75g Plastic Jar, (Fresh Fruit), 1 x Instruction Manual  
 REF 50008 1 x 75g Plastic Jar, (Fresh Strawberry), 1 x Instruction Manual  
 REF 50009 1 x 75g Plastic Jar, (Fresh Orange), 1 x Instruction Manual  
 REF 50010 1 x 75g Plastic Jar, (Fresh Pineapple), 1 x Instruction Manual

### Technical Data

|                          |        |
|--------------------------|--------|
| 1. Consistency           | 20 mm. |
| 2. Film Thickness        | 110 µm |
| 3. Sodium Fluoride Conc. | 1%     |

# A.C.E

## Ceramic Repair Kit

Comprehensive set for intraoral repairs of ceramic and composite restorations. The entire set is ergonomically arranged and enables you to work from left to right. Due to its outstanding high bonding values, this system is a reliable assistant in inconvenient situations. All the components are available separately.

### INDICATIONS

- Repair of porcelain fused to metal crowns & bridges, inlays and onlays and all ceramic restoration.

### PRODUCT BENEFITS

- Comprehensive set for intraoral repairs of ceramic and composite restorations.
- A.C.E. ceramic repair kit comprises the necessary bonding and veneering materials

### PRODUCT DETAILS

- Silane-X : Silanating Agent
- CeraEtch : 5% Hydrofluoric Acid
- Renew Universal : 10 MDP + 4 Meta
- Fusion Flo : Flowable composite

### PACKAGING

REF 50002 1 x 1.2ml Syringe CeraEtch + 5 Applicator Tips (Ref : 10012), 1 x 1.2ml Syringe Silane-X + 5 Applicator Tips (Ref : 10014), 1 x 1.2ml Syringe Fusion Flo, Opaque + 5 Applicator Tips (Ref : 20008-2), 1 x 1.2ml Syringe Renew Universal + 5 x Applicator Tips (Ref : 10017), 1 x Instruction Manual.

| Technical Data | Standard Applied |     |
|----------------|------------------|-----|
| 1. Curing Time | 30-40 Sec.       | IHS |
| 2. pH          | 2-3              |     |



# CERA ETCH

## Porcelain Etching Gel (5% Buffered Hydrofluoric Acid)

CeraEtch is 5% Buffered Hydrofluoric acid in semi gel form. It improves the mechanical bond between porcelain and bonding agent by increasing the surface roughness.

### INDICATIONS

- Repair of porcelain restorations.
- Cementation of porcelain restorations.

### PRODUCT BENEFITS

- 5% Buffered Hydrofluoric acid
- Better stability
- Selective Etching

### PACKAGING

REF 10012 1 x 1.2ml Syringe, 5 x Applicator Tips, 1 x Instruction Manual  
 REF 20013 1 x 10ml Plastic Bottle, 1 x Instruction Manual

| Technical Data | Standard Applied |  |
|----------------|------------------|--|
| 1. pH          | 2-3              |  |



# SILANE-X

## Silane Coupling Agent

Silane-X is a single component material which is used to enhance bond strength between composites/cements and porcelain. For best results the etched porcelain surface should be completely dry and free of residual moisture before applying Silane-X.



### INDICATIONS

- Used for porcelain repairs and bonding of etched porcelain restorations.

### PRODUCT BENEFITS

- Improves the mechanical strength and adhesion of indirect restorations
- For resin modification and surface modification.

### PACKAGING

- REF 10014 1 x 1.2ml Syringe, 5 x Applicator Tips, 1 x Instruction Manual
- REF 10015 1 x 10ml Plastic Bottle, 1 x Instruction Manual

# COPAL-F

## Copal Cavity Varnish with Flouride

Protective varnish based on Copal gum for insulating exposed dentine and providing thermal barrier.

### INDICATIONS

- Ideal cavity liner and dentinal tubule sealer
- Assures perfect protection to exposed dentine
- Intermediary varnish prior to insertion of amalgams, cements or composites

### PRODUCT BENEFITS

- Insulates exposed dentine
- Reduces penetration of fluids into the tooth
- Flouride provides thermal barrier for deep restoration
- Flouride alleviates thermal sensitivity
- Needs no thinners
- Compatible with most amalgams, cements and composites
- High fluidity for easy application

### PACKAGING

- REF 40027 1 x 15ml Glass Bottle, 1 x Dispensing Dropper, 1 x Instruction Manual

| Technical Data            | Standard Applied |           |
|---------------------------|------------------|-----------|
| 1. Total Flouride Content | 13 %             | ISO 17730 |



## CERAMIC REPAIR PRODUCTS

# FLUORODIP BIOACTIVE

## Varnish For Desensitizing and Re-mineralization

FluoroDip Bioactive is a sodium fluoride containing dental desensitizing varnish fortified with bio-glass for enhanced remineralization of enamel and dentine.

### INDICATIONS

- Desensitizing and re-mineralization of enamel and dentine.

### PRODUCT BENEFITS

- Contains Bioglass
- Effective Re-mineralization
- Easy Application

### PACKAGING

- REF 80001 1 x 10ml Dropper Bottle, (Spearmint Flavour), 1 x Instruction Manual
- REF 80001-2 10 x 0.5 ml Monodose Vials, 10 x Applicator Brushes, 10 x Mixing Wells, 1 x Instruction Manual (Spearmint Flavour)
- REF 80001-3 10 x 0.5 ml Monodose Vials, 10 x Applicator Brushes, 10 x Mixing Wells, 1 x Instruction Manual (Strawberry Flavour)
- REF 80001-4 1 x 0.5 ml Monodose Vials, 1 x Applicator Brush, 1 x Instruction Manual

| Technical Data            | Standard Applied |           |
|---------------------------|------------------|-----------|
| 1. Total Flouride Content | 13 %             | ISO 17730 |



# FUSION NANOCOAT

## Light Cured Protective Varnish

Fusion Nano Coat is a revolutionary, light cured, protective coating which effectively seals the surface to create smooth and glossy surface on the glass ionomer and composite restorations. It can also be used to polish areas such as posterior fissures or interproximal areas of indirect composite restorations.



### INDICATIONS

- Protects glass ionomer fillings from drying during the first hour after placement
- Increase wear resistance of restoration
- Glossy surface for composite resins

### PRODUCT BENEFITS

- Greatly enhances the esthetics of restorations
- Provides improved stain resistance
- Superior bond durability for long lasting gloss

### PACKAGING

REF 20013 1 x 5ml Squeeze Bottle, 1 x Instruction Manual

# SHIELD ACTIV

## Dentin Desensitizer

One step single solution desensitizer which provides quick and easy chair side solution to sensitivity caused by open tubules, bacteria and micro leakage. It is applied in one step with a brush. It's HEMA based composition is soft tissue friendly and provides immediate relief from dentinal hypersensitivity.



### INDICATIONS

- Cures dentinal hyper-sensitivity caused due to cervical erosions and exposed roots
- Fast action composition enabling quick sealing of tubules
- Inhibits bacterial growth due to quick action
- Cures hypersensitivity caused by open tubules micro leakage and technique sensitivity

### PRODUCT BENEFITS

- Stops pain caused by hot or cold or sweet/spicy foods
- Ideal for use under all indirect restorations
- Insulates exposed dentine
- Fluoride alleviates thermal sensitivity
- Compatible with all amalgams, cements and composites
- Prevents post operative sensitivity

### PACKAGING

REF 80003 1 x 5ml Squeeze Bottle, 1 x Instruction Manual

# BIOENAMEL

## Remineralizing & Desensitizing Gel Fortified with Bioglass

BioEnamel is a re-mineralizing gel which reduces post whitening sensitivity and effectively enhances the re-mineralization of the enamel.

### INDICATIONS

- Remineralization of de-mineralized tooth structure.
- Post whitening sensitivity.
- Sensitivity caused due to non-carious lesions and sensitivity after oral prophylaxis.

### PRODUCT BENEFITS

- Presented in a convenient dispenser pen with paint on brush for easy application.
- BioEnamel with bioglass re-mineralize the de-mineralized tooth structure.
- BioEnamel has inbuilt de-sensitizer.

### PACKAGING

REF 90012 1 x 2ml Dispensing Pen, 1 x Instruction Manual

### Technical Data

|                |            |
|----------------|------------|
| 1. pH          | 5 - 6      |
| 2. Consistency | 35 - 40 mm |



# VARNISHES PRODUCTS

# REVEAL

## Caries Indicator

Caries indicator that aids in detecting dental caries and helps minimise the removal of re-mineralizable dentin, thus securing the vitality of pulp and preserves maximum healthy tooth structure



### INDICATIONS

- Visual differentiation between infected carious dentine & sound, re-mineralizable dentine by its ability to selectively dye the carious dentine.

### PRODUCT BENEFITS

- Dark green color dye provides strong contrast with both dentine and the pulp
- Stains outer infected dentine only
- Does not stain uninfected (affected) dentine
- Detects caries in difficult to see places
- Propylene glycol base formulation more accurate than water based formula

### PACKAGING

REF 80002 1 x 5ml Plastic Dropper Bottle, 1 x Instruction Manual

# FLUOROTOP NF

## Topical Fluoride Gel 1.23% Fluoride, Neutral PH

A topical NF anti-caries preparation for dental use 1.23 % fluoride ion from sodium fluoride. Optimized pH for a quick complete treatment. The improved thixotropic properties ensure closer adherence to enamel and interproximal areas. It contains xylitol-a proven anti-caries ingredient. The gel is offered in flavours for patient satisfaction and there's no bitter taste.



### INDICATIONS

- Topical application of fluoride to aid in the protection against dental caries

### PRODUCT BENEFITS

- Inhibits plaque build-up
- Prevents demineralization of tooth
- Promotes re-mineralization for caries protection and prevention
- Economical
- High fluidity for easy and quick application

### PACKAGING

REF 80007 Net content: 500 gm  
REF 80006 Net content: 200 gm

| Technical Data |      |
|----------------|------|
| 1. pH          | 7.55 |

# FLUOROTOP APF

## Topical Fluoride Acidulated Phosphate Fluoride 1.23% Fluoride Ion

A topical APF anti-caries preparation for dental use 1.23 % fluoride ion from sodium fluoride. Optimized PH for a quick complete treatment. The improved thixotropic properties ensure closer adherence to enamel and interproximal areas. It contains xylitol-a proven anti-caries ingredient. The gel is offered in flavours for patient satisfaction and there's no bitter taste.



### INDICATIONS

- Topical application of fluoride to aid in the protection against dental caries

### PRODUCT BENEFITS

- Inhibits plaque build-up
- Prevents demineralization of tooth
- Promotes re-mineralization for caries protection and prevention
- Economical
- High fluidity for easy and quick application

### PACKAGING

REF 80005 Net content: 500 gm  
REF 80004 Net content: 200 gm

| Technical Data |      |
|----------------|------|
| 1. pH          | 3.85 |

# ALVOCURE

## Pengha Iodoform Paste

Alvocure is a dry socket treatment and post extraction dressing. It provides a soothing effect throughout the healing process. Its fibrous consistency allows for easy filling of the socket.



### INDICATIONS

- Treatment of dry sockets
- Post extraction dressing

### PRODUCT BENEFITS

- Quick and easy one step treatment
- Antimicrobial action due to the presence of iodoform
- Fibrous consistency - very easy to apply

### PACKAGING

REF 40023 Jar Pack : 1 x 12g Jar, 1 x Instruction Manual.

# ULTRA DRY

## Drying Agent

UltraDry is a fast drying, cleaning and degreasing agent for dental surfaces.



### INDICATIONS

- To remove moisture from dental surfaces
- To dry tooth surface prior to applying pit and fissure sealants (PF Seal, Prevest DenPro Ltd.) and other materials which are adversely affected by the presence of moisture.

### PRODUCT BENEFITS

- Excellent hydrophobic properties
- High fluidity for easy application

### PACKAGING

- REF 40033** Intro Pack : 1 x 1.2ml Syringes + 5 Applicator Tips, 1 x Instruction Manual
- REF 40034** Economy Pack : 1 x 10ml in a Plastic Bottle, 1 x Instruction Manual

# ACCUSIL PUTTY

## Hydrophilic Vinyl Polysiloxane Impression Material, Putty

Accusil Putty is a very high viscosity two paste addition silicone based elastomeric impression material with excellent hydrophilic properties, dimensional accuracy, high tear strength, and resistance to permanent deformation

### INDICATIONS

- Used with Accusil Light Body in a dual phase impression technique.
- Suitable for all impression techniques where a high viscosity material would be desired by the operator.
- Impressions of dentulous and edentulous arches, implants and precise duplication of models.

### PRODUCT BENEFITS

- Accurate impressions
- Extremely smooth
- Hydrophilic properties
- Exceptional dimensional stability
- High elasticity - Tear resistant
- Maximum elastic recovery
- Record critical details

### PACKAGING

- REF 70003** Plastic Jar, 150ml Base Paste, 150ml Catalyst Paste, 2 Measuring Spoons, 1 X Instruction Manual
- REF 70004** Plastic Jar 300ml Base Paste, 300ml Catalyst Paste, 2 Measuring Spoons, 1 x Instruction Manual

| Technical Data             | Standard Applied |
|----------------------------|------------------|
| 1. Mixing Time             | 30 Sec.          |
| 2. Working Time            | 2 - 2:30 min     |
| 3. Setting Time (in mouth) | 2 - 2.30 min.    |
| 4. Final Setting time      | 5 min.           |
| 5. Shore Hardness          | 65               |
| After 6 min.               | ISO 4823         |



# ACCUSIL LIGHT BODY

## Hydrophilic Vinyl Polysiloxane Impression Material, Light Body

Accusil Light Body is a addition silicone-based impression material for use in dentistry with an automatic mixing device. It is a hydrophilic vinyl polysiloxane impression material for the production of extraordinarily smooth and highly precision impressions for models, crowns, bridges and dentures.

### INDICATIONS

- Wash material for the putty-wash impression technique
- Syringe material for the simultaneous mixing technique
- Impression material for relining
- Cavity impression of facing, inlay, onlay etc
- Impression of crown or bridge, partial or full denture

### PRODUCT BENEFITS

- Excellent reproduction of marginal contours
- Excellent flow properties
- Excellent wettability
- Ideal working time
- Optimal intra-oral setting time
- Good tear strength and dimensional stability
- Compatible with all putty based VPS products.
- Records fine details

### PACKAGING

- REF 70005-1** 1 x 50ml Base/Catalyst Paste, 5x Mixing Tips- Yellow, 1 x Instruction Manual.
- REF 70005** 2 x 50ml Base/Catalyst Paste, 10 x Mixing Tips- Yellow, 1 x Instruction Manual.

| Technical Data    | Standard Applied |
|-------------------|------------------|
| 1. Working Time   | 2:15 Mins        |
| 2. Setting Time   | 4:30 min.        |
| 3. Shore Hardness | 65               |
| After 6 min.      | ISO 4823         |



## AUXILIARY PRODUCTS

# ACCUSIL COMBO KIT

## Hydrophilic Vinyl Polysiloxane Impression Kit (Putty & Light Body)

Accusil Putty is a very high viscosity two paste addition silicone based elastomeric Impression Material with excellent hydrophilic properties, dimensional accuracy, high tear strength, and resistance to permanent deformation.



### INDICATIONS

- Accusil Putty Impression Material is designed to be used with Accusil Light Body in a dual phase impression technique.
- Accusil Putty Impression Material is suitable for all impression techniques where a high viscosity material would be desired by the operator.
- Impressions of dentulous and edentulous arches, implants and precise duplication of models.

### PACKAGING

**REF 70004-1** Accusil Combo Kit Putty + Light Body (Soft) Hydrophilic Vinyl Polysiloxane impression Material 1 x 150ml Jar, Base Paste Putty, 1 x 150ml Jar, Catalyst Paste Putty, 2 x Spoon, 1 x 50ml Base/Catalyst Paste Light Body, 5 x Mixing Tips, 1 x Instruction Manual

| Technical Data                                  | Standard Applied |
|---|------------------|
| 1. Mixing Time                                  | 30 Sec.          |
| 2. Setting Time (in mouth) (Putty + Light Body) | 2 - 2.30 min.    |
| 2. Shore Hardness After 6 min.                  | 65               |
|   | ISO 4823         |

# ACCUSIL BITE REGISTRATION

## HYDROPHILIC VINYL POLYSILOXANE IMPRESSION MATERIAL, BITE BODY

Accusil Bite Registration is a vinylpolysiloxane (addition silicone), also known as A-Silicones especially made for bite registration work for crown and bridge, edentulous areas, implant techniques and laboratory procedures



### INDICATIONS

- It is indicated for highly accurate bite registration techniques that enable to easily replicate correct intercuspals and centric relationships.

### PRODUCT BENEFITS

- Good surface detail
- Easy to remove, trim and finish
- Requires less application time
- Dimensional stability and no shrinkage

### PACKAGING

**REF 70014** 2 X 50ml Base /Catalyst Cartridge, 10 x Mixing Tips, 1 x Instruction Manual  
**REF 70014-1** 1 X 50ml Base /Catalyst Cartridge, 5 x Mixing Tips, 1 x Instruction Manual

# ACCUSIL HEAVY BODY

## HYDROPHILIC VINYL POLYSILOXANE IMPRESSION MATERIAL, HEAVY BODY

Accusil Heavy Body is a heavy body polyvinyl siloxane impression material especially for the heavy wash impression, and Double arch Impression techniques

### INDICATIONS

- Impressions used for the fabrication of indirect restorations (crowns, bridges, inlays, onlays and veneers)
- Dental implant impressions
- Matrix for wax-ups and treatment planning, study models
- Edentulous impressions
- Matrix used to create temporary restorations
- Bite registrations

### PRODUCT BENEFITS

- Accurate reproduction of details
- Adequate working and setting time
- Excellent dimensional stability
- Choice of material for heavy wash & double arch impressions

### PACKAGING

**REF 70015** (REGULAR SET) : 2 X 50ml Base /Catalyst Paste, 10 x Mixing Tips, 1 x Instruction Manual  
**REF 70015-1** (REGULAR SET) : 1 X 50ml Base /Catalyst Paste, 5 x Mixing Tips, 1 x Instruction Manual  
**REF 70015-2** (FAST SET) : 1 X 50ml Base /Catalyst Paste, 5 x Mixing Tips, 1 x Instruction Manual  
**REF 70015-3** (FAST SET) : 2 X 50ml Base /Catalyst Paste, 10 x Mixing Tips, 1 x Instruction Manual



# ACCUSIL MONOPHASE

## HYDROPHILIC VINYL POLYSILOXANE IMPRESSION MATERIAL, MONOPHASE

Accusil Monophase is a medium body vinyl polyvinyl siloxane impression material for one-step, impression techniques

### INDICATIONS

- Taking impression over fixed/removable restorations and implants
- Functional impressions.
- Fabricating crown and bridgework or inlays.
- Fabricating full or partial dentures.
- Reline impressions.
- Transferring root posts when fabricating posts and cores indirectly

### PRODUCT BENEFITS

- Precise and void free impressions
- Better flow delivers great detail reproduction
- Economical and accurate dispensing of material
- Less distortion during removal from the mouth due to snap set properties

### PACKAGING

**REF 70006** Regular Set : 2 x 50ml Base/Catalyst Paste, 10 x Mixing Tips, 1 x Instruction Manual  
**REF 70006-1** Regular Set : 1 x 50ml Base/Catalyst Paste, 5 x Mixing Tips, 1 x Instruction Manual  
**REF 70006-2** Fast Set : 1 x 50ml Base/Catalyst Paste, 5 x Mixing Tips, 1 x Instruction Manual  
**REF 70006-3** Fast Set : 2 x 50ml Base/Catalyst Paste, 10 x Mixing Tips, 1 x Instruction Manual



# ALFINA

## Alginate Impression Material

Advanced new lead and dust free formula of ultra-fine alginate particles with significantly enhanced powder water affinity.



| Technical Data  |          |
|-----------------|----------|
| 1. Setting Time | 2.30 Min |
| 2. Working Time | 1.50 Min |

### INDICATIONS

- Impression for :
- Restorations like inlays, crowns, bridges, dentures and orthodontic applications
  - Study models
  - Opposing dentitions

### PRODUCT BENEFITS

- Extremely good powder-water affinity
- Dust free & lead free
- Highly elastic with excellent elastic memory
- Easier and quicker to mix without bubbles or inconsistencies
- Better taste with no excessive salivation, which is pleasant for patient and user
- Ideal thixotropic properties so it flows easily under light pressure without causing gagging
- Excellent adhesion to hydrocolloid materials

### PACKAGING

- REF 70009** Alfina Regular Set/Fast Set 450g Aluminum foil bag  
**REF 70010** Alfina Chromatic Regular Set/Fast Set 450g Aluminum foil bag

### SHADES

- Alfina Regular : Pink
- Alfina Chromatic : Yellow - Orange
- Alfina Fast Set : Pink

# HIFLEX IMPRESSION PASTE

## Zinc Oxide - Eugenol Based Impression Paste

Hiflex Zinc Oxide - Eugenol paste is an irreversible rigid impression material used as a secondary technique to take impression of edentulous patient with the help of muco compressive technique. The mix material adheres well to denture base, has adequate rigidity to prevent distortion of the impression borders. It has good dimensional stability, good detailed reproduction and impression can be modified by adding in deficient areas and easy to manipulate.



### INDICATIONS

- Final wash impressions for completely edentulous cases.
- Final wash impressions for partially edentulous distal extension.
- Relining of denture base.

### PRODUCT BENEFITS

- Good detail reproduction
- Dimensionally stable
- Easy manipulation
- Optimal consistency

### PACKAGING

- REF 70017** 1 x 140g Base Paste, 1 x 70g Catalyst Paste, 1 x Instruction Manual.

# HIFLEX IMPRESSION PASTE

## Eugenol Free Impression Paste

Hiflex Eugenol free impression paste is an irreversible rigid impression material used for recording impressions of edentulous patients with the help of muco compressive technique. The mix material adheres well to the custom impression tray & has adequate rigidity to prevent distortion of the impression borders. It does not contain eugenol and is therefore irritant free with better taste.

### INDICATIONS

- Final wash impressions for completely edentulous cases.
- Final wash impressions for partially edentulous distal extension.
- Relining of the denture base.

### PRODUCT BENEFITS

- Dimensionally stable
- Ease of use
- Optimal consistency
- Good detail reproduction

### PACKAGING

- REF 70018** 1 x 140g Base Paste, 1 x 70g Catalyst Paste, 1 x Instruction Manual.

### Technical Data

|                 |           |
|-----------------|-----------|
| 1. Setting Time | 3 - 4 min |
|-----------------|-----------|



# IMPRESSION MATERIALS

# FLORENCE

## In-Office Whitening System

Florence In-office whitening system is rapid and easiest way to effectively whiten the teeth. It is based on pH-Activated, 35% Hydrogen Peroxide formula with built in desensitizer. It is a complete professional whitening system, safe and effective.



### INDICATIONS

- In-Office whitening

### PRODUCT BENEFITS

- No bleaching light needed
- Advanced chemical activated formula
- Whitening results in less than an hour
- In-built desensitizer for decreased sensitivity

### PACKAGING

**REF 90001** One Patient Kit : 2 x 0.3g Powder Pots, 2 x 3ml Liquid Bottles, 1 x 1.2ml Gingiva Shield VLC, (Gingival barrier Syringes) 2 x Micro Brushes, 2 x Applicator Tips, 1 x Instruction Manual

**REF 90002** Two Patient Kit : 4 x 0.3g Powder Pots, 4 x 3ml Liquid Bottles, 2 x 1.2ml Gingiva Shield VLC (Gingival barrier Syringes), 1 x Mixing Pot, 4 x Micro Brushes, 4 x Applicator Tips, 1 x Instruction Manual

### Technical Data

|       |       |
|-------|-------|
| 1. pH | 7 - 8 |
|-------|-------|

# GINGIVA SHIELD VLC

## Light Curing Gingiva Resin Barrier, Blue

Gingiva Shield VLC is a light curing resin based, gingival barrier in syringe packing for isolating gums and neighbouring teeth. After bleaching, it is easily removable from the gum and inter-tooth spaces. It is a safe and effective barrier to protect soft tissues with impervious seal.



### INDICATIONS

- Protection of gums during the whitening or other dental treatments

### PRODUCT BENEFITS

- Light cured resin-based gingival barrier
- Protects soft tissue with impervious seal
- Easily removable after bleaching
- Convenient to apply from syringe

### PACKAGING

**REF 90010** Intro Pack : 2 x 1.2ml Syringe, 2 x Applicator Tips, 1 x Instruction Manual

**REF 90011** Kit Pack : 4 x 1.2ml Syringe, 4 x Applicator Tips, 1 x Instruction Manual

### Technical Data

|                  |             |
|------------------|-------------|
| 1. Depth of Cure | 2 mm        |
| 2. Flexural      | 55 - 60 MPa |
| 3. Consistency   | 30 - 35 mm  |
| 4. Curing Time   | 40 Sec.     |

# 24 CARAT

## Advanced Zero Sensitivity Tooth Whitening System

24 Carat is a high viscosity tooth whitening gel presented in a convenient dispenser pen for paint on brush application. Its optimized pH considerably causes no sensitivity.

### INDICATIONS

- Whitening of discoloured vital and non-vital teeth

### PRODUCT BENEFITS

- Zero sensitivity formula
- Convenient pen dispenser for easy application
- Optimal viscosity gel

### PACKAGING

**REF 90003-1** Intro Pack : 1 x 2ml Dispensing Pen (16%), 1 x Instruction Manual

**REF 90003-2** Intro Pack : 2 x 2ml Dispensing Pen (16%), 1 x Instruction Manual

**REF 90004-1** Intro Pack : 1 x 2ml Dispensing Pen (22%), 1 x Instruction Manual

**REF 90004-2** Intro Pack : 2 x 2ml Dispensing Pen (22%), 1 x Instruction Manual

**REF 90005-1** Intro Pack : 1 x 2ml Dispensing Pen (35%), 1 x Instruction Manual

**REF 90005-2** Intro Pack : 2 x 2ml Dispensing Pen (35%), 1 x Instruction Manual

### Technical Data

|                |           |
|----------------|-----------|
| 1. pH          | 7 - 8     |
| 2. Consistency | 25 - 30mm |



# 24 CARAT

## Advanced Zero Sensitivity Tooth Whitening System

24 Carat is a revolutionary, state-of-the-art, teeth whitening gel. Its advanced zero sensitivity formula eliminates sensitivity. The optimized pH gel consists of the active carbamide peroxide-glycerine combination suspended in high viscosity gel which considerably reduces the treatment time.

### INDICATIONS

- Gentle and permanent whitening of teeth in cases of staining due to medication, fluorosis, food, tobacco and ageing
- Whitening of non vital teeth

### PRODUCT BENEFITS

- Zero sensitivity formula
- Thick consistency gel
- High percentage of active teeth whitening ingredients
- Safe and gentle - optimized pH

### PACKAGING

**REF 90003** Intro Pack : 1 x 5ml Syringe (16%), 1 x Applicator Tips, 1 x Instruction Manual

**REF 90004** Intro Pack : 1 x 5ml Syringe (22%), 1 x Applicator Tips, 1 x Instruction Manual

**REF 90005** Intro Pack : 1 x 5ml Syringe (35%), 1 x Applicator Tips, 1 x Instruction Manual

**REF 90006** Economy Pack : 4 x 1.5ml Syringe (16%), 4 x Applicator Tips, 1 x Instruction Manual

**REF 90007** Economy Pack : 4 x 1.5ml Syringe (22%), 4 x Applicator Tips, 1 x Instruction Manual

**REF 90008** Economy Pack : 4 x 1.5ml Syringe (35%), 4 x Applicator Tips, 1 x Instruction Manual

### Technical Data

|                   |       |
|-------------------|-------|
| 1. pH             | 7 - 8 |
| 2. Consistency    | 26 mm |
| 3. Film Thickness | 45 µm |



# HEMOSTAL

## Gingival Retraction Solution

Hemostal is 25% buffered aluminium chloride solution to stop / control gingival bleeding during restorative procedures, placement of metal bands, cervical matrices, and crown preparations.



### INDICATIONS

- Liquid to stop minor gingival bleeding

### PRODUCT BENEFITS

- Non staining unlike ferric sulphate which stains porcelain veneers and crowns
- Effectively stops minor gingival bleeding
- Contains no epinephrine to help avoid cardiac reactions
- Stable and long shelf life

### PACKAGING

**REF 60001** 1 x 15ml Glass Bottle, 1 x Dispensing Dropper, 1 x Instruction Manual

# HEMOSTAL GEL

## Gingival Retraction Gel

Hemostal Gel is 25% buffered aluminium chloride thixotropic, non dripping gel for stopping minor gingival bleeding during restorative procedures, placement of metal bands, cervical matrices, and crown preparations. Excellent handling properties make it easy to place class V composite restorations, cementation and scaling in periodontal cases.



### INDICATIONS

- Gel to stop minor gingival bleeding

### PRODUCT BENEFITS

- Thixotropic gel-convenient to apply
- Non staining unlike ferric sulphate which stains porcelain veneers and crowns
- Effectively stops minor gingival bleeding
- Stable and long shelf life
- Pleasantly flavoured

### PACKAGING

**REF 60002** Syringe Pack : 1 x 3g Syringe, 10 x Applicator Tips, 1 x Instruction Manual

# ORAFIL-G / ORAFIL PLUS

## Temporary Filling Material

Ready to use zinc sulphate cement for provisional filling and temporary insertion of permanent crowns and bridges.

### INDICATIONS

- Temporary restoration of cavities in interval between tooth preparation and permanent cementation
- Cementing medium for temporary purpose, inserting all types of permanent crowns and bridges

### PRODUCT BENEFITS

- Non eugenol formulation offers non irritating properties
- Resin addition gives high adhesive properties
- Quick and void free curing in moist environment
- Slight expansion of filling material ensures well sealed margin
- Excellent adaptability
- Simple to apply with filling instrument

### PACKAGING

**REF 11001** Jar Pack : 1 x 40g Jar - (Orafil-G), 1 x Instruction Manual  
**REF 11002** Jar Pack : 1 x 40g Jar - (Orafil-Plus), 1 x Instruction Manual

| Technical Data          | Standard Applied |          |
|-------------------------|------------------|----------|
| 1. Flow                 | 16 mm            | ISO 3107 |
| 2. Setting Time         | 6 Min 30 Sec.    |          |
| 3. Compressive Strength | 7 - 8 MPa.       |          |



# ORAFIL LC

## Light Cured, Temporary Filling Material

Orafil-LC is a light-curing material for temporary filling and sealing. The elastic consistency assures an easy removal, even in case of undercuts, and finishing the cavity is not necessary. Thus the fitting of the temporary filling will be improved. Orafil-LC is available in syringes for direct application into the cavity.

### INDICATIONS

- All kinds of temporary fillings, temporary protection of inlays / onlays preparations.
- Implant screw access temporaries.
- Emergency repair of lost fillings and fractured teeth.

### PRODUCT BENEFITS

- Quick and easy removal-can be removed in one piece-thus leave cavity clean upon removal.
- High wear resistance
- Excellent adhesion
- Durable and tight marginal seal
- Non eugenol composition.
- Suitable for long term temporaries.

### PACKAGING

**REF 11002-1** 1 x 3g Syringe, 1 x Instruction Manual

| Technical Data   |  |
|------------------|--|
| 1. Depth of Cure | 4-5 mm                                     |
| 2. Curing Time   | 20-40 Sec.(depending upon layer thickness) |
| 3. Colour        | Blue                                       |



# ORATEMP NE

## Non-eugenol Temporary Luting Cement

OraTemp NE is a non eugenol temporary cement which permits placement and retention under function of permanent crowns, bridges, splints and their temporary counterparts. OraTemp NE is insoluble in oral fluids and retains a tight marginal seal to prevent leakage of these fluids under the restorations.



### INDICATIONS

- Cementation of crowns, bridges and splints
- Retentions of temporary crowns and bridges
- Trial cementation of permanent restorations prior to final insertion

### PRODUCT BENEFITS

- Excellent physical properties
- Easy to mix - easy to clean
- Low solubility in oral fluids

### PACKAGING

**REF 11003** Manual Mix Pack : 1 x 15g Cartridge - (Base & Catalyst), 1 x Spatula, 1 x Mixing Pad, 1 x Instruction Manual.

**REF 11004** Auto Mix Pack : 1 x 15g Automix Cartridge - (Base & Catalyst), 20 x Automix Tips, 1 x Instruction Manual.

# ORATEMP C&B

## Temporary Crown and Bridge Material

OraTemp C&B (crown and bridge material) is a composite material for the fabrication of temporary restorations. Based on multi-functional methacrylate esters, this two-component system has filling material-like properties. With the help of dispensing gun, the material can be applied directly from the cartridge without causing any bubbles to form a Oratemp temporary restorations.



### INDICATIONS

- Fabrication of temporary crowns, bridges, inlays, onlays, and veneers.
- Fabrication of long-lasting temporary restorations.
- Lining material for prefabricated temporary crowns made of composite.

### PRODUCT BENEFITS

- Excellent strength and low wear for durable temporaries.
- Superior surface details.
- 1 : 1 volume ratio for an even flow and improved handling properties.
- Low shrinkage and low curing temperature.
- Extremely polishable and colour stable.
- Can be easily repaired with flowable composite.

### PACKAGING

**REF 11005** 1 x 67g Cartridge (Base + Catalyst Paste), 16 x Applicator Tips, 1 x Instruction Manual.

### SHADES

A1, A2 & A3

| Technical Data             |                 | Standard Applied |
|----------------------------|-----------------|------------------|
| 1. Ratio (Base / Catalyst) | 1 : 1           | ISO-10477        |
| 2. Working time            | 1min-1min 20sec |                  |
| 3. Setting Time            | 2min-2min 30sec |                  |
| 4. Compressive Strength    | 300 MPa         |                  |
| 5. Flexural Strength       | 100 MPa.        |                  |

# ULTRA BLOC VLC

## Light Curing Block-out Resin

Ultra Bloc VLC is a viscous, light cured, methacrylate based resin for creating reservoir space for bleaching trays and is useful for laboratory procedures such as model and die repair. It can block out defects and under cuts on the stone models quickly and securely for precise abutment preparation.

### INDICATIONS

- For creating reservoir space for bleaching trays
- Blocking out undercuts
- For laboratory mock-up on models
- Other laboratory procedures

### PRODUCT BENEFITS

- Single component material blocks out defects and undercuts on the model quickly, precisely and securely
- Simple application with no sticking to instruments

### PACKAGING

**REF 90009** Kit Pack : 4 x 1.2ml Syringe, 4 x Applicator Tips, 1 x Instruction Manual



# HIFLEX H

## Ultra High Impact Heat Cured Denture Base

Ultra high impact heat cured denture base with excellent flow characteristics, good tensile strength and color stability.

### INDICATIONS

- Ideal for highest quality of prosthetic work

### PRODUCT BENEFITS

- Accurate Fit
- Long working time in its dough stage
- Flowable and practicable consistency after mixing
- Exceptionally high mechanical strength and high lustre finish
- Cadmium free composition

### PACKAGING

**REF 15004** Intro Pack : 1 x 225g Powder Jar, 1 x 150ml Liquid Bottle, 1 x Instruction Manual

**REF 15005** 1K Powder in Plastic Jar

**REF 15006** 1L Liquid in Plastic Bottle

Bulk packing of liquid and powder also available.

### SHADES

Pink, veined, clear.



# HIFLEX RR

## Denture Repair & Relining Material (Self Cure)

High quality denture base material for repairing dentures and carrying out additions or relining.



### INDICATIONS

- Repair of full and partial dentures
- Relining of full and partial dentures
- Extensions to dentures

### PRODUCT BENEFITS

- Produces extremely durable repairs and relines to existing dentures
- Exhibits very high bond strength to existing denture acrylics of all types
- Exceptionally high mechanical strength and high lustre finish
- Cadmium free composition

### PACKAGING

- REF 15001** Intro Pack : 1 x 225g Powder Jar, 1 x 150ml Liquid Bottle, 1 x Instruction Manual
- REF 15002** 1K Powder in Plastic Jar
- REF 15003** 1L Liquid in Plastic Bottle



## LAB MATERIALS

# ROTOFLEX BLUE

## NiTi Rotary Files

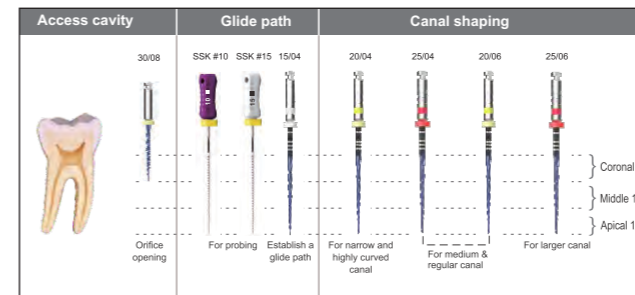
Rotoflex Blue are mechanized NiTi endodontic instruments used to prepare root canals

### INDICATIONS

- It is indicated to explore, shape, clean and/or help fill a root canal system including cases with complex anatomy, abrupt curvatures and limited access.

### PRODUCT BENEFITS

- Efficient shaping and cleaning.
- Superior flexibility.
- Reduced operator fatigue.
- Enhanced safety and control.



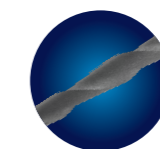
### PACKAGING

- REF 41027** (Ino-Shaper Files, S Cross Section) ASSORTED 21mm, (30/08 Opener, 15/04, 20/04, 25/04, 20/06, 25/06)
- REF 41028** (Ino-Shaper Files, S Cross Section) ASSORTED 25mm, (30/08 Opener, 15/04, 20/04, 25/04, 20/06, 25/06)
- REF 41029** (Ino-Shaper Files, S Cross Section) ASSORTED 31mm, (30/08 Opener, 15/04, 20/04, 25/04, 20/06, 25/06)
- REF 41030** (Ino-Shaper Files, S Cross Section) 21mm, (15/04)
- REF 41031** (Ino-Shaper Files, S Cross Section) 25mm, (15/04)
- REF 41032** (Ino-Shaper Files, S Cross Section) 21mm, (20/04)
- REF 41033** (Ino-Shaper Files, S Cross Section) 25mm, (20/04)
- REF 41034** (Ino-Shaper Files, S Cross Section) 21mm, (25/04)
- REF 41035** (Ino-Shaper Files, S Cross Section) 25mm, (25/04)
- REF 41036** (Ino-Shaper Files, S Cross Section) 21mm, (30/04)
- REF 41037** (Ino-Shaper Files, S Cross Section) 25mm, (30/04)
- REF 41038** (Ino-Shaper Files, S Cross Section) 21mm, (35/04)
- REF 41039** (Ino-Shaper Files, S Cross Section) 25mm, (35/04)
- REF 41040** (Ino-Shaper Files, S Cross Section) 21mm, (40/04)
- REF 41041** (Ino-Shaper Files, S Cross Section) 25mm, (40/04)
- REF 41042** (Ino-Shaper Files, S Cross Section) 21mm, (20/06)
- REF 41043** (Ino-Shaper Files, S Cross Section) 25mm, (20/06)
- REF 41044** (Ino-Shaper Files, S Cross Section) 21mm, (25/06)
- REF 41045** (Ino-Shaper Files, S Cross Section) 25mm, (25/06)
- REF 41046** (Ino-Shaper Files, S Cross Section) 21mm, (30/06)
- REF 41047** (Ino-Shaper Files, S Cross Section) 25mm, (30/06)
- REF 41064** (Ino-Shaper Files, S Cross Section) 31mm, (15/04)
- REF 41065** (Ino-Shaper Files, S Cross Section) 31mm, (20/04)
- REF 41066** (Ino-Shaper Files, S Cross Section) 31mm, (25/04)
- REF 41067** (Ino-Shaper Files, S Cross Section) 31mm, (30/04)
- REF 41068** (Ino-Shaper Files, S Cross Section) 31mm, (35/04)
- REF 41069** (Ino-Shaper Files, S Cross Section) 31mm, (40/04)
- REF 41070** (Ino-Shaper Files, S Cross Section) 31mm, (20/06)
- REF 41071** (Ino-Shaper Files, S Cross Section) 31mm, (25/06)
- REF 41072** (Ino-Shaper Files, S Cross Section) 31mm, (30/06)
- REF 41073** (Ino-Shaper Files, S Cross Section) 21mm, (35/06)
- REF 41074** (Ino-Shaper Files, S Cross Section) 21mm, (40/06)
- REF 41075** (Ino-Shaper Files, S Cross Section) 25mm, (35/06)
- REF 41076** (Ino-Shaper Files, S Cross Section) 25mm, (40/06)
- REF 41077** (Ino-Shaper Files, S Cross Section) 31mm, (35/06)
- REF 41078** (Ino-Shaper Files, S Cross Section) 31mm, (40/06)
- REF 41048** (Ino-Shaper Files, S Cross Section) 19mm, (30/08)

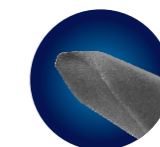
### Assorted Pack Available in 21mm, 25mm and 31mm

| SIZE/TAPER | MOTION/RPM | TORQUE  |
|------------|------------|---------|
| 30/08      | 300        | 3       |
| 15/04      | 300        | 2 - 2.5 |
| 20/04      | 300        | 2 - 2.5 |
| 25/04      | 300        | 2 - 2.5 |
| 20/06      | 300        | 2 - 2.5 |
| 25/06      | 300        | 2 - 2.5 |

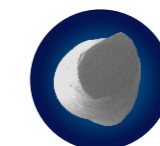
## Why Choose Rotoflex Blue?



- Taper Options (4% and 6%) in 21mm, 25mm and 31mm**
- 4% (e.g., 15/04, 20/04, 25/04, 30/04, 35/04, 40/04)
- 6% (e.g., 20/06, 25/06, 30/06, 35/06, 40/06)



- Pilot tip**
- Rotoflex Blue has non-cutting end tip for conservative preparation



- S-Shaped Cross Section**
- Efficient, safe and conservative shaping.

# ROTOFLEX GOLD

## NiTi Rotary Files

Rotoflex Gold files are mechanized NiTi endodontic instruments used to prepare root canals

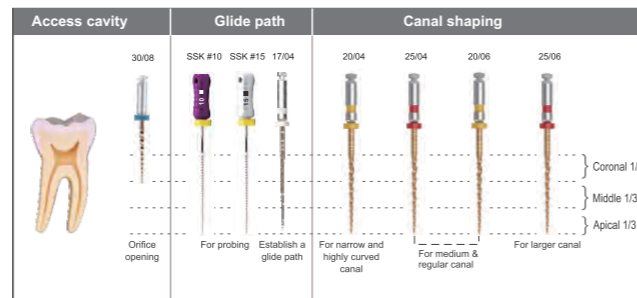


### INDICATIONS

- It is indicated to explore, shape, clean and/or help fill a root canal system including cases with complex anatomy, abrupt curvatures and limited access.

### PRODUCT BENEFITS

- Efficient shaping and cleaning.
- Superior flexibility.
- Reduced operator fatigue.
- Enhanced safety and control.



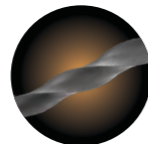
### PACKAGING

- REF 41001** (R-Shaper Files, Triangular Cross Section) ASSORTED 21mm, (30/08 Opener, 17/04, 20/04, 25/04, 20/06, 25/06)
- REF 41002** (R-Shaper Files, Triangular Cross Section) ASSORTED 25mm, (30/08 Opener, 17/04, 20/04, 25/04, 20/06, 25/06)
- REF 41003** (R-Shaper Files, Triangular Cross Section) ASSORTED 31mm, (30/08 Opener, 17/04, 20/04, 25/04, 20/06, 25/06)
- REF 41004** (R-Shaper Files, Triangular Cross Section) 21mm, (17/04)
- REF 41005** (R-Shaper Files, Triangular Cross Section) 25mm, (17/04)
- REF 41006** (R-Shaper Files, Triangular Cross Section) 21mm, (20/04)
- REF 41007** (R-Shaper Files, Triangular Cross Section) 25mm, (20/04)
- REF 41008** (R-Shaper Files, Triangular Cross Section) 21mm, (25/04)
- REF 41009** (R-Shaper Files, Triangular Cross Section) 25mm, (25/04)
- REF 41010** (R-Shaper Files, Triangular Cross Section) 21mm, (30/04)
- REF 41011** (R-Shaper Files, Triangular Cross Section) 25mm, (30/04)
- REF 41012** (R-Shaper Files, Triangular Cross Section) 21mm, (35/04)
- REF 41013** (R-Shaper Files, Triangular Cross Section) 25mm, (35/04)
- REF 41014** (R-Shaper Files, Triangular Cross Section) 21mm, (40/04)
- REF 41015** (R-Shaper Files, Triangular Cross Section) 25mm, (40/04)
- REF 41016** (R-Shaper Files, Triangular Cross Section) 21mm, (20/06)
- REF 41017** (R-Shaper Files, Triangular Cross Section) 25mm, (20/06)
- REF 41018** (R-Shaper Files, Triangular Cross Section) 21mm, (25/06)
- REF 41019** (R-Shaper Files, Triangular Cross Section) 25mm, (25/06)
- REF 41020** (R-Shaper Files, Triangular Cross Section) 21mm, (30/06)
- REF 41021** (R-Shaper Files, Triangular Cross Section) 25mm, (30/06)
- REF 41022** (R-Shaper Files, Triangular Cross Section) 21mm, (35/06)
- REF 41023** (R-Shaper Files, Triangular Cross Section) 25mm, (35/06)
- REF 41024** (R-Shaper Files, Triangular Cross Section) 21mm, (40/06)
- REF 41025** (R-Shaper Files, Triangular Cross Section) 25mm, (40/06)
- REF 41053** (R-Shaper Files, Triangular Cross Section) 31mm, (17/04)
- REF 41054** (R-Shaper Files, Triangular Cross Section) 31mm, (20/04)
- REF 41055** (R-Shaper Files, Triangular Cross Section) 31mm, (25/04)
- REF 41056** (R-Shaper Files, Triangular Cross Section) 31mm, (30/04)
- REF 41057** (R-Shaper Files, Triangular Cross Section) 31mm, (35/04)
- REF 41058** (R-Shaper Files, Triangular Cross Section) 31mm, (40/04)
- REF 41059** (R-Shaper Files, Triangular Cross Section) 31mm, (20/06)
- REF 41060** (R-Shaper Files, Triangular Cross Section) 31mm, (25/06)
- REF 41061** (R-Shaper Files, Triangular Cross Section) 31mm, (30/06)
- REF 41062** (R-Shaper Files, Triangular Cross Section) 31mm, (35/06)
- REF 41063** (R-Shaper Files, Triangular Cross Section) 31mm, (40/06)
- REF 41026** (R-Shaper Files, Triangular Cross Section) 19mm, (30/08)
- REF 41079** PATH FILES (R-Shaper Files, Triangular Cross Section) 21mm, (16/02)
- REF 41080** PATH FILES (R-Shaper Files, Triangular Cross Section) 25mm, (16/02)

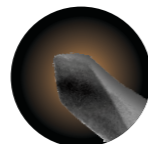
### Assorted Pack Available in 21mm, 25mm and 31mm

| SIZE/TAPER | MOTION/RPM | TORQUE  |
|------------|------------|---------|
| 30/08      | 300        | 3       |
| 17/04      | 300        | 2 - 2.5 |
| 20/04      | 300        | 2 - 2.5 |
| 25/04      | 300        | 2 - 2.5 |
| 20/06      | 300        | 2 - 2.5 |
| 25/06      | 300        | 2 - 2.5 |

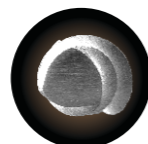
## Why Choose Rotoflex Gold?



- Taper Options (4% and 6%) in 21mm, 25mm and 31mm**
- 4% (e.g., 17/04, 20/04, 25/04, 30/04, 35/04, 40/04)
  - 6% (e.g., 20/06, 25/06, 30/06, 35/06, 40/06)



- Pilot tip**  
Superior debris removal



- Triangular Cross Section**  
Sharp, efficient, and smooth instrumentation

# VIROGUARD

## Surface Disinfectant Spray for Medical Devices

ViroGuard is a rapid-action, broad-spectrum antimicrobial spray formulated specifically for cleaning and disinfecting the surfaces of medical equipment. Regular application between patient consultations helps to minimize the risk of cross-contamination in medical and dental settings.

### INDICATIONS

- It is used for cleaning, decontaminating and disinfecting surfaces (such as trolleys, beds, chairs, trays, work benches, examination tables, dental units, handles, spittoons, other non invasive equipments and instruments).

### PRODUCT BENEFITS

- Does not contain phenols, aldehydes, chlorine or EDTA
- Does not affect the medical equipment
- Fast acting
- Leaves no residue after drying

### PACKAGING

- REF 16012** 500 ml Spray Bottle
- REF 16013** 1 Litre Can
- REF 16014** 5 Litre Can

### Physical Properties

|            |                                     |
|------------|-------------------------------------|
| Appearance | Transparent Homogeneous Liquid      |
| Density    | 0.9 - 1.01g/cm <sup>3</sup> at 20°C |
| pH         | 9.0 - 10 at 20°C                    |
| Odour      | Mild (alcohol)                      |
| Storage    | 5°C - 35°C                          |
| Stability  | 3 Years                             |



# VIROGUARD FOAM

## Surface Disinfectant Foam Spray for Medical Devices

ViroGuard Foam is a foaming disinfectant spray with a broad antimicrobial spectrum of activity. It combines excellent cleaning and disinfecting properties and ensures the protection of patients and staff. It's alcohol-free formulation is ideal for the rapid disinfection of sensitive medical equipment surfaces, as incubators, monitors, plexiglass, upholstery materials.

### INDICATIONS

- It is an alcohol free foam spray used for disinfection of alcohol sensitive non invasive medical devices such as dental units, beds, stretchers, work benches etc.
- It can also be used for disinfection of non invasive medical equipments such as monitors, displays, keyboards and control panels etc.

### PRODUCT BENEFITS

- Fast acting, ready-to-use alcohol free spray foam disinfectant
- Leaves no residue after drying
- Does not affect medical equipments
- Suitable for alcohol sensitive materials such as leatherite, plastic
- Does not contain phenol, aldehydes and chlorine
- Excellent wetting properties

### PACKAGING

- REF 16009** 500 ml Spray Bottle
- REF 16010** 1 Litre Can
- REF 16011** 5 Litre Can

### Physical Properties

|            |                                     |
|------------|-------------------------------------|
| Appearance | Transparent Homogeneous Liquid      |
| Density    | 0.9 - 1.01g/cm <sup>3</sup> at 20°C |
| pH         | 9.3 - 10.3 at 20°C                  |
| Odour      | Neutral                             |
| Storage    | 5°C - 35°C                          |
| Stability  | 3 Years                             |



# VIROWIPES

## Rapid Disinfection Wipes for Medical Devices

ViroWipes is a one-step, ready to use, disposable wipes for the rapid disinfection of all kinds of wipeable surfaces of non-invasive medical devices such as hand pieces, contra-angle, turbines, scaler inserts and other non invasive instruments and equipments with increased risk of infection.



### INDICATIONS

- It is used for a rapid disinfection and cleaning of medical devices and surfaces like hand pieces, contra-angles, turbines, scaler inserts etc.

### PRODUCT BENEFITS

- One-step-simply wipe to clean and disinfect surfaces of non-invasive medical devices.
- Leaves no residue on the surfaces
- Pleasant fragrance

### PACKAGING

- REF 16015 50 Wipes (10x15) in a Tub
- REF 16016 50 Wipes (15x20) in a Tub
- REF 16017 80 Wipes (15x20) in a Tub

| Physical Properties |                    |
|---------------------|--------------------|
| Appearance          | Wipes              |
| pH                  | 9.0 - 10.0 at 20°C |
| Odour               | Neutral            |
| Storage             | 5°C - 35°C         |
| Stability           | 3 Years            |

# VIROSHIELD

## Disinfectant for Suction System

ViroShield is a powerful concentrated formulation intended for the thorough cleaning and disinfection of common vacuum lines, amalgam filters, and spittoons. It effectively clears organic matter such as saliva, blood, protein deposits and debris from drilling procedures, helping to reduce biofilm buildup and ensuring hygienic internal pipe surfaces.



### INDICATIONS

- It is indicated for daily hygiene and disinfection of dental suction systems as a part of their general disinfecting routine.

### PRODUCT BENEFITS

- Cost effective-2% dilution
- Eradicates bad smell
- Does not contain phenols, aldehydes or chlorine

### PACKAGING

- REF 16001 1 Litre Dosing Bottle
- REF 16002 5 Litre Can

| Physical Properties |                                     |
|---------------------|-------------------------------------|
| Appearance          | Pale Yellow Color Solution          |
| Density             | 0.9 - 1.01g/cm <sup>3</sup> at 20°C |
| pH (2%w/v)          | 9.3 - 10.3 at 20°C                  |
| Odour               | Mild Aromatic (Lemon)               |
| Storage             | 5°C - 35°C                          |
| Stability           | 3 Years                             |

# VIROSHIELD PDR

## Disinfectant for Suction System

ViroShield PDR is a powder concentrate for weekly hygiene and disinfection of dental suction systems of all types including their drainage pipes and spittoons. The low foaming powder concentrate offers a high cleaning and disinfection performance.



### INDICATIONS

- It is indicated for weekly hygiene and disinfection of dental suction systems as a part of their general disinfecting routine.

### PRODUCT BENEFITS

- Cost effective powder concentrate
- Eradicates bad smell
- Does not contain phenols, aldehydes or chlorine

### PACKAGING

- REF 16019 25g Pouch
- REF 16003 500g Jar
- REF 16004 1kg Jar

| Physical Properties |                       |
|---------------------|-----------------------|
| Appearance          | White Granular Powder |
| Solubility          | Very Soluble          |
| pH (2%w/v)          | 9.0 - 10.0 at 20°C    |
| Odour               | Mild Aromatic         |
| Storage             | 5°C - 35°C            |
| Stability           | 3 Years               |

# VIROZYM

## Enzymatic Concentrate for Cleaning and Disinfection of Medical Devices

ViroZym is a high-strength enzymatic cleaner specifically formulated for the pre-disinfection or pre-sterilization cleaning of surgical instruments and endoscopes. Its potent composition include a protease that cleans peptide bond. This enhances the removal of most resistant organic contaminants.

### INDICATIONS

- It is used for manual cleaning and disinfection of dental and medical devices such as rotary and surgical instruments respectively.
- It can also be used in ultrasonic cleaners for high level enzymatic cleaning and disinfection of dental and medical instruments.

### PRODUCT BENEFITS

- Effective with 1% dilution.
- Cleans, disinfects and deodorizes in one step.
- Removes stubborn deposits.
- Does not contain phenols, aldehydes or chlorine

### PACKAGING

- REF 16005 1 Litre Dosing Bottle
- REF 16006 5 Litre Can

| Physical Properties |                                     |
|---------------------|-------------------------------------|
| Appearance          | Pale Yellow Color Solution          |
| Density             | 0.9 - 1.01g/cm <sup>3</sup> at 20°C |
| pH (1% w/w)         | 9.0 - 10.0 at 20°C                  |
| Odour               | Mild Aromatic (Lemon)               |
| Storage             | 5°C - 35°C                          |
| Stability           | 3 Years                             |



# VIROPEROX

## Powder Concentrate for Medical Instrument Disinfection

ViroPerox is a powder concentrate for cleaning, cold sterilization and disinfection of all kinds of non invasive medical devices. The concentrate powder when dissolved in water, produces a concentrated solution of peracetic acid and hydrogen peroxide at neutral pH.



### INDICATIONS

- It is indicated for quick manual cleaning and disinfection of non-invasive medical devices.
- It can also be used in ultrasonic cleaners for cleaning and disinfection of instruments & equipments with increased risk of infection.

### PRODUCT BENEFITS

- High efficiency concentrated formula for manual and ultrasonic cleaning.
- Exceptionally safe to use- Environment friendly
- Non- carcinogenic- Aldehyde and phenol free.

### PACKAGING

- REF 16018 25g Pouch
- REF 16007 500g Jar,
- REF 16008 1kg Jar

| Physical Properties |                       |
|---------------------|-----------------------|
| Appearance          | White Granular Powder |
| Solubility          | Very Soluble          |
| pH (2%w/v)          | 9.0 - 10.0 at 20°C    |
| Odour               | Mild Aromatic         |
| Storage             | 5°C - 35°C            |
| Stability           | 3 Years               |



## HYGIENE & DISINFECTANT PRODUCTS

# PREVEST C&B, CERAMIC

## Nano Ceramic Filled material for High Flexural & Compressive strength

Prevest C&B, Ceramic is a Nano ceramic filled hybrid material at 50% content composition. This specialized 3D resin material is developed for high flexural & compressive strength making Prevest C&B Ceramic a definitive search for 3D crowns printing. The material is biocompatible and fulfills Class II requirements. The print is easy to finish and polish and gives excellent aesthetics matching existing teeth. The speciality of material is accurate fitting with smooth production sequence and reproducible results.

The material is designed to print at 25 micron - 100 micron using LCD/DLP printers.

Available in shades : Vita shades, Bleach & Extra bleach.

### INDICATIONS

- It is used for the fabrication of 3D printed permanent crown inlays, onlays and veneers.

### PRODUCT BENEFITS

- Low water absorption tendency reduces aging and discoloration
- Smooth surface so low plaque accumulation
- Low cold and heat sensitivity
- Fluorescence resembles natural teeth
- Excellent aesthetics
- High flexural and compressive strength
- Radiopaque for clear visibility of restoration on radiographs

### PACKAGING

- REF 18017 250g Bottle
- REF 18013 500g Bottle
- REF 18014 1000g Bottle



# PREVEST C&B, INTERIM

## Tooth colored dental glass filled hybrid material for 3D print temporary crowns, inlays, onlays and veneers

Prevest C&B, Interim resin is biocompatible and fulfills Class II requirements. This 3D printing material is composed of inorganic fillers which gives high flexural and compressive strength. The print is easy to finish and polish and gives excellent aesthetics matching existing teeth. The speciality of material is accurate fitting with smooth production sequence and reproducible results.

The material is designed to print at 25 micron - 100 micron using LCD/DLP printers.

Available in shades : Vita shades, Bleach & Extra bleach.

### INDICATIONS

- It is used for fabricated of 3D printed temporary crown and bridge restorations, inlays, onlays and veneers

### PRODUCT BENEFITS

- Low water absorption tendency reduces aging and discoloration
- Smooth surface so low plaque accumulation
- Low cold and heat sensitivity
- Fluorescence resembles natural teeth
- Excellent aesthetics
- High flexural and compressive strength

### PACKAGING

- REF 18015 250g Bottle
- REF 18005 500g Bottle
- REF 18006 1000g Bottle



## PREVEST C&B, PERMANENT

### Tooth colored dental glass filled hybrid material for 3D print permanent crowns, inlays, onlays and veneers

Prevest C&B, permanent resin is biocompatible and fulfills Class II requirements. This 3D printing material is composed of inorganic fillers which gives high flexural and compressive strength. The print is easy to finish and polish and gives excellent aesthetics matching existing teeth. The speciality of material is accurate fitting with smooth production sequence and reproducible results.

The material is designed to print at 25 micron - 100 micron using LCD/DLP printers.

Available in shades : Vita shades, Bleach & Extra bleach.

#### INDICATIONS

- It is used for fabrications of 3D printed permanent crown, inlays, onlays and veneers

#### PRODUCT BENEFITS

- Low water absorption tendency reduces aging and discoloration
- Smooth surface so low plaque accumulation
- Low cold and heat sensitivity
- Fluorescence resembles natural teeth
- Excellent aesthetics
- High flexural and compressive strength

#### PACKAGING

- REF 18016** 250g Bottle
- REF 18007** 500g Bottle
- REF 18008** 1000g Bottle



## PREVEST MODEL

### 3D Print High-Contrast Dental Models

Prevest Model is a way forward in 3D printing more accurate and highly precise model base and dies with easy fitting and easy attachment of crowns and bridges. The material is developed with high flexural strength. The material is ideal for prosthodontic and orthodontic models where high precision is required.

The material is designed to print at 25 micron - 100 micron using LCD/DLP printers.

Available in Beige color.

#### INDICATIONS

- It is used for fabrication of 3D crown and bridge models, orthodontic models, diagnostic models and implants analog models.

#### PRODUCT BENEFITS

- High flexural strength and modulus
- Fast printing speed

#### PACKAGING

- REF 18021** 250g Bottle
- REF 18001** 500g Bottle
- REF 18002** 1000g Bottle



## PREVEST MODEL PRO

### 3D Printing Resin for Fabrication of Thermostable Models

Prevest Model Pro resin is a way forward in 3D printing more accurate and highly precised model base and dies with easy fitting and easy attachment of crowns and bridges. The material is designed with high flexural strength and more heat resistance. The material is designed to print at 25 micron - 100 micron using LCD/DLP printers.

Prevest Model Pro prints models with high quality with odor free properties.

Available in Beige color.

#### INDICATIONS

- It is used for fabrication of 3D crown and bridge models, orthodontic models, diagnostic model and implant analog models.

#### PRODUCT BENEFITS

- High Flexural strength and modulus
- Fast printing speed
- Easy to separate from thermoforming materials
- Color contrast models for maximum visibility of small details

#### PACKAGING

- REF 18022** 250g Bottle
- REF 18023** 500g Bottle
- REF 18024** 1000g Bottle



## PREVEST BURN OUT

### Ash – Free Castable Resin

Prevest Burn Out 3D Resin material is an easy burnout material for printing cast crowns, bridges, and frameworks of all kinds. The printed material can be burned out without leaving any residue. The speciality of material is accurate fitting with smooth production sequence and reproducible results.

The material is designed to print at 25 micron - 100 micron using LCD/DLP printers.

Available in Violet color.

#### INDICATIONS

- It is used for 3D printing of burn out frames in Casting of partial dentures, crowns and bridges, inlays, onlays and veneers.

#### PRODUCT BENEFITS

- Easy to work
- Suitable for casting copings, substructures, crowns and more
- Burns clean with no residue left after burnout

#### PACKAGING

- REF 18019** 250g Bottle
- REF 18011** 500g Bottle
- REF 18012** 1000g Bottle



# PREVEST SURGICAL GUIDE

## 3D Print precise clear Guides

Prevest Surgical Guide is a high precise and more accurate 3D printing material used for fabrication of templates for implant surgery. The material is biocompatible and fulfills Class I requirements. The high accuracy in printing enables easy pilot drilling after printing.



The material is designed to print at 25 micron - 100 micron using LCD/DLP printers.

Available in clear transparent appearance.

### INDICATIONS

- It is a photopolymer resin used for 3D printing dental surgical guides to aid in dental implant placement procedures.

### PRODUCT BENEFITS

- Autoclavable
- Easy chemical disinfection
- Fast printing
- Clear and ice aesthetic appearance
- High flexural strength

### PACKAGING

- REF 18020 250g Bottle
- REF 18003 500g Bottle
- REF 18004 1000g Bottle

# PREVEST DENTURE

## Biocompatible Photopolymer Resin for Denture Bases

Prevest Denture 3D Resin material is biocompatible Class II material for printing all types of removable denture bases. Material is having excellent mechanical properties which can produce long-lasting, wear-resistant, biocompatible denture bases at a fraction of the cost compared to traditional methods. The speciality of material is accurate fitting with smooth production sequence and reproducible results.



The material is designed to print at 25 micron - 100 micron using LCD/DLP printers.

Available in Pink Denture shades.

### INDICATIONS

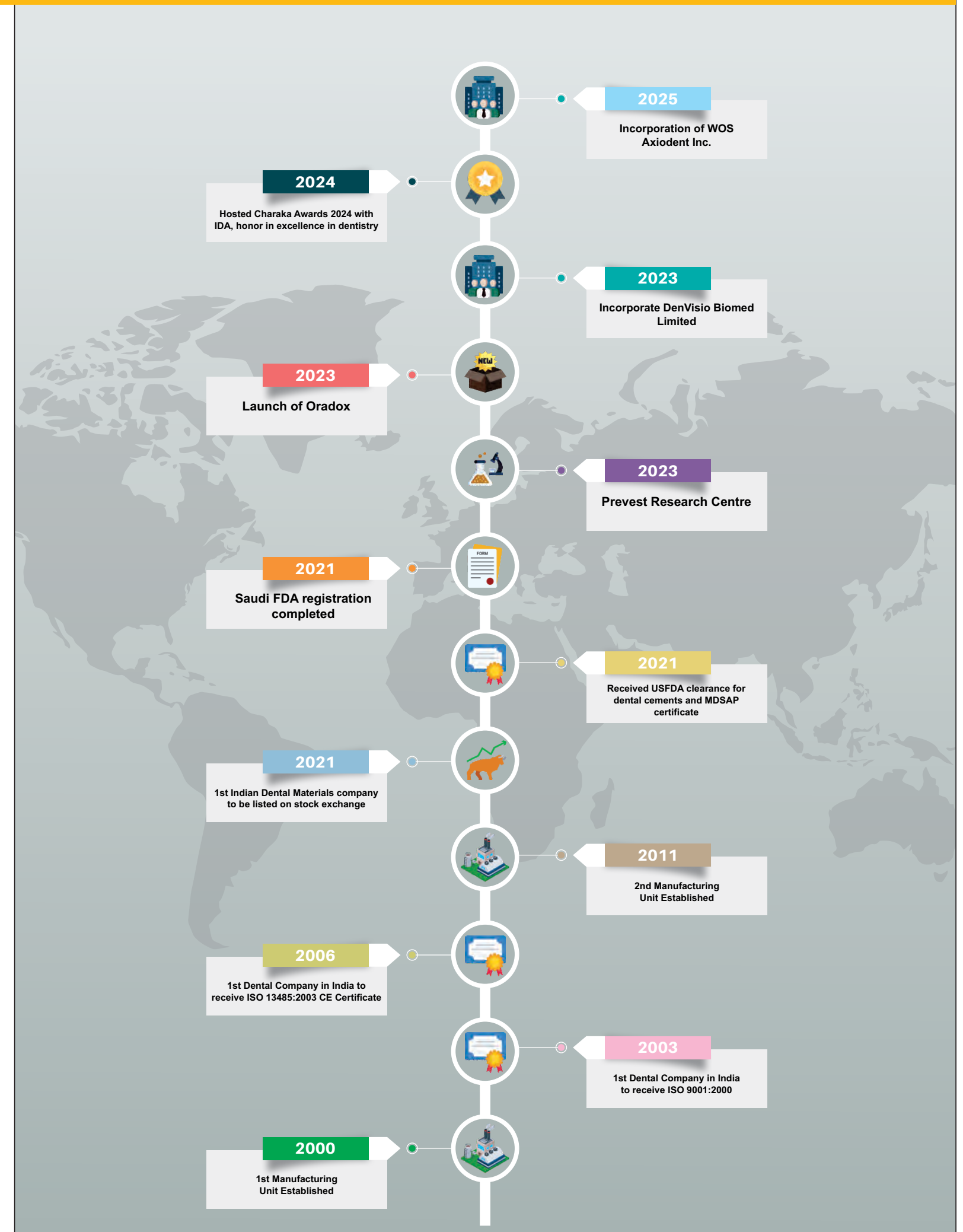
- It is indicated for the fabrication of removable full and partial dentures and base plate

### PRODUCT BENEFITS

- Semi-translucent, Pink Base shades
- Strong and water-Resistant
- Repeatable and reliable

### PACKAGING

- REF 18018 250g Bottle
- REF 18009 500g Bottle
- REF 18010 1000g Bottle





NOTES

Inventing Smiles,  
Inspiring Tomorrow



"The future of dental care isn't just imagined, we research it, create it, and deliver it to the world"



**PREVEST DenPro<sup>®</sup>**  
THE FUTURE OF DENTISTRY

## Prevest DenPro Limited

Unit-II, Export Promotion Industrial Park (EPIP),  
Bari Brahmana, Jammu - 181133, India.

**Phones** : +91 191 350 6858, 60, 61

**Toll Free Customer Care No.** : + 91 8899074151

**Mobile** : + 91 94191 94280

**Website** : [www.prevestdenpro.com](http://www.prevestdenpro.com)

**E-mail** : [info@prevestdenpro.com](mailto:info@prevestdenpro.com),

[customercare@prevestdenpro.com](mailto:customercare@prevestdenpro.com)

DOC : F-C-10-05

Issue : 05 Rev. 00

Date : 06-12-2025

CE ● ISO 13485:2016 ●