

Renew MDP

One Component Self Etch Bonding Agents

Renew MDP is a light cure single component dental bonding agent that combines etching priming and bonding in one bottle.



Indications

- Light cure bonding agent for dual, light and self curing composites, compomers and ormocers.
- Bonding of indirect restorations and endodontic posts.
- Intraoral repair.
- Desensitizer.

Benefits

- Excellent bonding capabilities to dentin and cut /uncut cut enamel.
- Fully compatible with light cured, self cured and dual cured composite materials.

Chemistry

Ethanol-water based adhesive contain 10 MDP a functional monomer.

Technical Data

- 1) Curing Time : 20-30 sec.
- 2) Shear Bond Strength : 15-20 Mpa

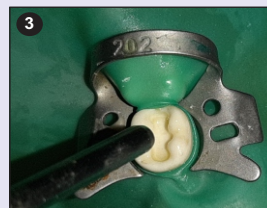
Techniques



Prepared cavity.



Apply & then rub the preparation for 10 to 15 sec per coat. Do not light cure between coats.



Gentle air dry for 10 sec.



Light cure for 20 sec.

Presentation

Ref. : 10016
1 x 5ml Bottle, 1 x Instruction Manual.

PREVEST DENPRO LIMITED

Unit II, Export Promotion Industrial Park (EPIP),
Bari Brahmana, Jammu-181133, India.

Tel.: + 91 191 350 6858, 60, 61
Tel.: + 91 8899074151

E-mail : info@prevestdenpro.com
Website : www.prevestdenpro.com

Renew MDP

One Component Self Etch Bonding Agents



Renew MDP is a light cure single component dental bonding agent that combines etching priming and bonding in one bottle.

PREVEST DENPRO LIMITED

Unit II, Export Promotion Industrial Park (EPIP),
Bari Brahmana, Jammu-181133, India.

Tel.: + 91 191 350 6858, 60, 61
Tel.: + 91 8899074151

E-mail : info@prevestdenpro.com
Website : www.prevestdenpro.com