



PRODUCT CATALOG 2023

Prevest DenPro Limited started its journey in a modest way in the year 1999 and set up its first manufacturing unit with a handful of workforces and few products for dental applications. Over the years it has developed into a major international player in the dental industry with exports to more than 80 countries.

Prevest DenPro now operates a modern state-of-the-art factory set up in Export Promotion Industrial Park, Bari Brahmana, Jammu, India. The company also established a state-of-the-art learning and training center for conducting dental courses and continuing professional education at its headquarters in Jammu.

The company has established a very efficient Quality Management System (QMS) which has been assessed and approved by TUV SUD, a German notified body. The company is complying with the European and Indian medical devices regulations.

The company is managed by corporate management team headed by Mr. Atul Modi, a qualified Mechanical Engineer with over 40 years of experience in successfully managing diversified business. Mrs. Namrata Modi, Executive Director, who is master's in business administration having 20 years of experience in the successful management of this company and Dr. Sai Kalyan MDS, MS, Ph.D., Director Research & Academics have more than 16 years of academics & research experience.

The company has over 150 highly skilled workforce managed by a professional team comprising of dental professionals, engineers, management graduates, and chemists. The company has a research & development department which is responsible for the development of high-quality innovative dental materials.

The quality of its products is highly appreciated by dental professionals worldwide.

Indian Dental Association has recognized its achievements and contribution to oral health care and the IDA jury nominated the company for the "National Oral Healthcare Sushruta Award" for Best Dental Manufacturer. Associated Chambers of Commerce and Industry of India (ASSOCHAM) has bestowed the company with TOP MSME award for 2022

The Federation of Indian Exporters has awarded the company with the "Top Exporter Award" and the Ministry of Commerce has recognized the company as a "Star Export House."

ABOUT THE COMPANY

Table of Contents

ADHESIVE, BONDING AGENTS & ETCHANTS	02
COMPOSITES	06
CEMENTS & LINERS	09
ENDODONTICS	18
ORTHODONTICS	31
FINSIHING & POLISHING	32
CERAMIC REPAIR	34
VARNISHES	35
AUXILIARIES	36
IMPRESSION MATERIALS	38
TOOTH WHITENING	43
HEMOSTATIC MATERIALS	46
TEMPORARY MATERIALS	47
LAB MATERIALS	49

FUSION BOND 7

Light Curing Self Etching One Component Bonding Adhesive

Fusion Bond 7 is a 7th generation, multi-functional, light cured one component dentine/enamel bonding agent for bonding of both direct and indirect restoration. Fusion Bond 7, primes & bonds in one step.



INDICATIONS

- Adhesion of composite resin for direct / indirect restorations

PRODUCT BENEFITS

- Single step self-etch bonding agent for direct composite restorations
- Excellent adhesion to dentine and enamel
- Long lasting bonding strength
- Universal for all light curing restorations

PACKAGING

REF 10001 Intro Pack : 1 x 5ml Squeeze Bottle, 1 x Instruction Manual

REF 10002 Economy Pack : 2 x 5ml Squeeze Bottle, 40 x Micro Brushes, 1 x Instruction Manual

Technical Data		Standard Applied
1. Curing Time	20 – 30 sec.	ISO 29022
2. Shear Bond Strength	15 – 20 MPa	

FUSION BOND 5

Light Curing Total Etch One Component Bonding Adhesive

Fusion Bond 5 is a multifunctional, light cured, one component dentine/enamel bonding agent. It has excellent adhesion to tooth tissue and composite resin. One bottle system, easy to use and can be applied to both dentine and enamel.



INDICATIONS

- Adhesion of the composite resin for direct restoration

PRODUCT BENEFITS

- Simple to use one step bonding material
- Excellent adhesion to dentin and enamel
- Long lasting bonding strength

PACKAGING

REF 10003 Intro Pack : 1 x 5ml Squeeze Bottle, 1 x Instruction Manual

REF 10004 Economy Pack : 2 x 5ml Squeeze Bottle, 40 x Micro Brushes, 1 x Instruction Manual

Technical Data		Standard Applied
1. Curing Time	20 – 30 sec.	ISO 29022
2. Shear Bond Strength	15 – 20 MPa	

FUSION BOND DC

Dual Curing Total Etch Dentine/Enamel Bond

Fusion Bond DC is dual curing bonding agent for enamel and dentine, as well as to metal and ceramic suitable for use with dual-curing and self-curing composites. It is a two components system to be used with self curing and dual curing resin cements to bond all indirect restorations including metal, ceramic and composites crowns, inlays, onlays, veneers and bridge retainers and bonding of endodontics posts.

INDICATIONS

- Direct, light cured/self cured composite and compomer restorations.
- Bonding of Indirect restorations and light/self cure resin cemented veneers
- Direct, light cured/self cure composite restorations and core build-up
- Indirect restoration resin cemented inlays, onlays, crown and bridge retainers
- Endodontic post cementation

PRODUCT BENEFITS

- High bond strength to both dentine and enamel
- Dual cure versatility
- Reduced post operative sensitivity

PACKAGING

REF 10005 1 x 5ml Bonding Agent, 1 x 5ml Activator, 20 x Micro Brushes, 1 x Instruction Manual

Technical Data		Standard Applied
1. Curing Time	20 – 30 sec.	ISO 29022
2. Shear Bond Strength	15 – 17 MPa	



MICROGEL SF

Gel For Enamel Etching And Dentin Conditioning

Green tinted viscous gel of 37% phosphoric acid with silica free composition recommended for use on enamel and dentine.

INDICATIONS

- For conditioning of both dental enamel and dentine surfaces before placing adhesive restoration

PRODUCT BENEFITS

- 37% phosphoric acid to give best dentine etching results
- Provides controlled depth of dental etch
- Does not dry etched tooth surface

PACKAGING

REF 10010 Intro Pack : 1 x 5ml Syringe, 10 Applicator Tips, 1 x Instruction Manual

REF 10011 Economy Pack : 4 x 5ml Syringe, 40 x Applicator Tips, 1 x Instruction Manual

Technical Data	
1. Colour	Green
2. PH	< 1
3. Phosphoric Acid	37 %



RENEW MDP

One Component Self Etch Bonding Agent

Renew MDP is a light-cured single-component dentine bonding agent that combines etching, priming and bonding in one bottle. It is an ethanol-water based dental adhesive containing 10-Methacryloyloxydecyl Dihydrogen Phosphate (10-MDP), a functional monomer which helps in bonding to dentin and cut and un-cut enamel. Renew MDP has been designed to be fully compatible with light-cured, self-cured and dual-cured composite materials. Renew MDP can be used for the bonding of both direct and indirect restorations and may be used with or without phosphoric acid etchant.



INDICATIONS

- Light cure bonding agent for dual, light and self curing composites, compomers and ormocers.
- Bonding of indirect restorations and endodontic posts.
- Intraoral repair.
- Desensitizer.

PRODUCT BENEFITS

- Renew MDP is fully compatible with light-cured, self-cured and dual-cured composite materials.
- Renew MDP can be used for the bonding of both direct and indirect restorations and may be used with or without phosphoric acid etchant.
- (10-MDP) a functional monomer which helps in bonding to dentin, cut / un-cut enamel.

PACKAGING

REF 10016 Regular Pack : 1 x 5ml Bottle, 1 x Instruction Manual

Technical Data		Standard Applied
1. Curing Time	20 – 30 Sec.	ISO 29022
2. Shear Bond Strength	20 – 30 MPa	

RENEW UNIVERSAL

One Component Self Etch Universal Bonding Agent

Renew Universal is a light-cured single-component dentine bonding agent that combines etching, priming and bonding in one bottle. A novel universal dental adhesive containing a unique combination of functional monomers such as 10-MDP and 4-META. It has excellent bonding capabilities to dentin and cut / un-cut enamel. As a universal adhesive, Renew Universal has been designed to be fully compatible with light - cured and dual-cured composite materials. Renew Universal can be used for the bonding of both direct and indirect restorations and may be used with or without phosphoric acid etchant.



INDICATIONS

- Direct bonding of light-cured composites, compomers and ormocers to tooth structure.
- Bonding of dual-cured core build up composites to tooth structure as long as these materials are light-cured.
- Treatment of hypersensitive teeth.
- Sealing of tooth preparation (cavity or abutment).

PRODUCT BENEFITS

- A novel universal dental adhesive containing a unique combination of functional monomers such as 10-MDP and 4-META.
- Intraoral repair of composite, metal-based, ceramic restorations in combination with a silane coupling agent and zirconia/alumina-based restorations.

PACKAGING

REF 10017 Intro Pack : 1 x 1.2ml Syringe, 5 x Applicator Tips, 1 x Instruction Manual.

REF 10018 Regular Pack : 1 x 5ml Bottle, 1 x Instruction Manual.

REF 10019 Kit Pack : 2 x 5ml Bottle, 40 x Micro Brushes, 1 x Instruction Manual.

Technical Data		Standard Applied
1. Curing Time	20 – 30 Sec.	ISO 29022
2. Shear Bond Strength	20 – 30 MPa	

ACTINO GEL / LIQUID

Dental Etching Gel / Liquid

Blue tinted viscous gel/liquid of 37% phosphoric acid for etching tooth enamel and dentine conditioning or composite surfaces prior to the bonding of any composites, sealants or bonding adhesives.

INDICATIONS

- For conditioning of both enamel and dentine surfaces before placing adhesive restoration

PRODUCT BENEFITS

- 37% phosphoric acid to give best dentine etching results
- Provides controlled depth of dental etch
- Does not dry etched tooth surface

PACKAGING

- REF 10006-1** Trial Pack : 1 x 2ml Syringe, 5 x Applicator Tips, 1 x Instruction Manual
- REF 10006-2** Trial Pack : 1 x 3ml Syringe, 10 x Applicator Tips, 1 x Instruction Manual
- REF 10006** Intro Pack : 1 x 5ml Syringe, 10 x Applicator Tips, 1 x Instruction Manual
- REF 10006-5** Economy Pack : 3 x 3ml Syringe, 30 x Applicator Tips, 1 x Instruction Manual
- REF 10007** Economy Pack : 4 x 5ml Syringe, 40 x Applicator Tips, 1 x Instruction Manual
- REF 10008** Jumbo Pack : 1 x 50ml Syringe, 2 x 5ml Empty Syringe, 20 x Applicator Tips, 1 x Instruction Manual
- REF 10009** Liquid Packing : 1 x 10ml Squeeze Bottle



Technical Data

1. pH	<1
2. Consistency	29mm
3. Thickness	28µm



ADHESIVES, BONDING AGENTS & ETCHANTS PRODUCTS

MAGMA NT

Nano Ceramic Universal Restorative

Magma NT, Nano Ceramic Universal restorative is a visible light curing composite designed to use in anterior and posterior restorations. Magma NT is a low shrinkage composite in combination of nano silica and zirconia filler.



Technical Data		Standard Applied
1. Curing Time	40 Sec.	ISO 4049
2. Depth of Cure	1.0 (Opaque Shade), 1.5 (Other Shade)	
3. Compressive Strength	300 MPa	
4. Flexural Strength	140 – 150 MPa	

INDICATIONS

- Direct anterior and posterior restorations
- Core build-ups
- Splinting
- Indirect restorations

PRODUCT BENEFITS

- Easy handling due to high viscosity
- Very high wear resistance
- High polishability

PACKAGING

REF 20002 Master Kit : 7 x 4g Syringes Regular Shade (A2-2, A3-2, A3.5-1, B2-1, B3-1) 1 x 5ml Bottle Fusion Bond 7, 1 x 5ml Bottle Fusion Nano Coat, 1 x 2g Syringe Fusion Flo - A2 Shade, 1 x 4g Syringe Platina Hi-Gloss, 20 x Micro Brushes, 10 x Applicator tips, 1 x Instruction Manual, 1 x Shade Card

REF 20002-1 Intro Kit : 4 x 4g Syringes Magma NT, Regular Shade (A1-1, A2-1, A3-1, B2-1), 1 x 5ml Bottle Fusion Bond 7, 1 x 5ml Bottle Fusion Nano Coat, 20 x Micro Brushes, 1 x Instruction Manual, 1 x Shade Card

REF 20001 Refills : 1 x 4g Syringe, 1 x Instruction Manual

REF 20003 Unit Dose Compules : 20 x 0.25g Compules, 1 x Instruction Manual

SHADES

- A1, A2, A3, A3.5, A4, B1, B2, B3, C1, C2, C3, D1, D2, Opaque, Incisal, OA1, OA2, OA3, Bleach, Gingival G1, G2, G3, G4

FUSION UNIVERSAL

Light Cured Universal Nano Hybrid Composite

Fusion Universal is visible light cured, radiopaque, highly filled, fine hybrid composite restorative material for all cavity classes of anterior and posterior teeth.



Technical Data		Standard Applied
1. Curing Time	40 Sec.	ISO 4049
2. Depth of Cure	1.0 (Opaque Shade), 1.5 (Other Shade)	
3. Compressive Strength	300 MPa	
4. Flexural Strength	140 – 150 MPa	

INDICATIONS

- Direct restoration of all cavity classes in anterior and posterior teeth
- Preventive resin restoration and repairs of composite ceramic veneers
- Aesthetic corrections
- Core build-up & Composite inlays

PRODUCT BENEFITS

- Excellent physical properties for long lasting restorations
- Lower polymerization shrinkage than conventional composites
- High filler contents
- Extremely high abrasion resistance

PACKAGING

REF 20004 Refills : 1 x Syringe, 4g, 1 x Instruction Manual

REF 20005 Intro Kit : 4 x 4g syringes (A2, A3, B2, B3), 1 x 5ml Fusion Bond 5, 1 x 2ml syringe Actino Gel, 10 x Micro Brushes, 10 x Applicator Tips, 1 x Instruction Manual

REF 20006 Combo Kit : 7 x 4g Syringes (A1, A2, A3, A3.5, B1, B2, B3)
Combo / Intro Kit Accessories : 1 x 5ml Fusion Bond 5, 1 x 2ml Actino Etching Gel, 10 x Micro Brushes, 10 x Applicator Tips, 1 x Instruction Manual

REF 20007 Unit Dose Compules : 20 x 0.25g Compules, 1 x Instruction Manual

SHADES

- A1, A2, A3, A3.5, A4, B1, B2, B3, C1, C2, C3, D1, D2, Opaque, Incisal, OA1, OA2, OA3, Bleach, Gingival G1, G2, G3, G4

PF SEAL

Light Cured Pit and Fissure Sealant

PF SEAL is a light cured sealant which is recommended for prevention of caries by sealing pit and fissure.

INDICATIONS

- Sealing/Filling of the pit and fissure
- Filling of the small caries
- Filling of the deciduous teeth

PRODUCT BENEFITS

- New resin formula for strong & long lasting sealant
- Superior pit & fissure sealing ability
- Convenient flow through tips

PACKAGING

REF 20012-1 1 x 2g Syringe, 5 x Applicator Tips, 1 x Instruction Manual

REF 20012 2 x 2g Syringe, 10 x Applicator Tips, 1 x Instruction Manual

SHADES

- Clear, Opaque, Translucent and Tinted

Technical Data	Standard Applied	
1. Curing Time	40 Sec.	ISO 6874
2. Depth of Cure	1.5 – 2mm	



FUSION FLO

Light Cured Nano Hybrid Flowable Composite

Fusion Flo is an excellent flowable composite that delivers high strength & wear resistance. It is characterized by optimum surface affinity, penetrates into most difficult area. It combines esthetics as well as flow on demand handling for use.

INDICATIONS

- Filling of smaller cavities
- Extended fissure sealing
- Restoration class III to V
- Repairs of fillings & veneers

PRODUCT BENEFITS

- Optimal flowability
- Higher filler loading
- Excellent physical properties
- Lower polymerisation shrinkage
- Very good abrasion resistance

PACKAGING

REF 20008 Intro Pack : 2 x 2g Syringes, 10 x Applicator Tips, 1 x Instruction Manual

REF 20009 Combo Kit : 4 x 2g Syringes (A2, A3, B2, B3), 20 x Applicator Tips, 1 x Instruction Manual

REF 20008-1 Trial Pack : 1 x 2g Syringes, 5 x Applicator Tips, 1 x Instruction Manual

SHADES

- A1, A2, A3, A3.5, A4, B1, B2, OA2, OA3, Incisal, Bleach, Gingival G1, G2, G3, G4

Technical Data	Standard Applied	
1. Curing Time	40 Sec.	ISO 4049
2. Depth of Cure	1.0 (Opaque Shade), 1.5 (Other Shade)	
3. Compressive Strength	100 – 120 MPa	
4. Flexural Strength	100 – 120 MPa	



FUSION CORE DC FLO

Flowable, Dual Curing, Nano-tech Core Build-Up Composite

Fusion Core DC Flo is a dual cure, radiopaque, two component, core build-up material in a convenient automix delivery syringe. This material flows conveniently, yet stacks without slumping, thus offering easy placement. The dual cure formulation allows complete curing.



INDICATIONS

- Core build-up, for vital as well as non-vital teeth
- Luting of fibre-reinforced resin posts

PRODUCT BENEFITS

- Light curing for time saving application
- Additional chemical curing for complete polymerisation
- Low heat development even in bulk application
- Flowable, non slumping formula for convenient placement
- Low shrinkage properties

PACKAGING

- REF 20011 Intro Pack - Auto Mix :** 1 x 9g Automix Syringe, 10 x Intra-oral Tips, 10 x Endo Tips, 1 x Instruction Manual
- REF 20011-1 Combo Kit :** 1 x 9g Core Build Up Automix Syringe, 1 x 9g Ultra D/C Automix Syringe, 1 x 3ml Bonding Agent, 1 x 3ml Activator, 10 x Intra Oral Tips, 10 x Endo Tips, 10 x Automix Tips, 10 x Micro Brushes, 1 x Instruction Manual

Technical Data		Standard Applied
1. Working Time	60 Sec.	ISO 4049
2. Setting Time	3 - 4 Min	
3. Flexural Strength	60 - 70 MPa	
4. Film Thickness	50 µm	



COMPOSITES PRODUCTS

FUSION I-SEAL

Light Curing Glass Ionomer Composite Cement

Fusion I-Seal is a light cured glass ionomer cement for lining, extended fissure sealing and smaller lesions.

INDICATIONS

- Lining under all kinds of filling materials
- Extended fissure sealing
- Restoration of smaller lesions

PRODUCT BENEFITS

- Ready to use one component light cured glass ionomer cement
- High compressive strength
- Fluoride release
- Radiopaque
- Fast and easy to apply

PACKAGING

- REF 30002-1** Trial Pack : 1 x 2g Syringe, 5 x Applicators Tips, 1 x Instruction Manual
REF 30002 Intro Pack : 2 x 2g Syringes, 10 x Applicators Tips, 1 x Instruction Manual
REF 30003 Economy Pack : 4 x 2g Syringes, 20 x Applicators Tips, 1 x Instruction Manual
REF 30003-1 Intro Pack : 1 x 3g Syringe, 10 x Applicators Tips, 1 x Instruction Manual
REF 30003-2 Kit Pack : 2 x 3g Syringes, 20 x Applicators Tips, 1 x Instruction Manual

Technical Data		Standard Applied
1. Curing Time	30 – 40 Sec.	ISO 9917-2
2. Flexural Strength	80 MPa	



CAL LC

Light Cured Radiopaque Calcium Hydroxide Paste

Cal LC is light cured radiopaque calcium hydroxide paste useful in pulp capping and as a protective base/liner under dental filling materials, cements & other base materials.

INDICATIONS

- For direct & indirect pulp capping
- Acid protection when applying etch technique
- As cavity liner under all filling materials

PRODUCT BENEFITS

- Time-saving, direct application and light curing
- Ready to use one component material
- Acid Resistant
- Effective protection of the pulp
- Helps formation of secondary dentine
- Excellent adhesion to composites
- High compressive strength
- Low solubility in oral fluids

PACKAGING

- REF 30004** Trial Pack : 1 x 2g Syringes, 5 Applicator Tips, 1 x Instruction Manual
REF 30005 Intro Pack : 2 x 2g Syringes, 10 Applicator Tips, 1 x Instruction Manual
REF 30005-1 Economy Pack : 4 x 2g Syringes, 20 Applicator Tips, 1 x Instruction Manual

Technical Data		Standard Applied
1. Curing Time	30 – 40 Sec.	ISO 9917-2
2. Flexural Strength	80 MPa	



APACAL ART

Photo Cure Pulp Protectant / Liner

ApaCal ART is photo cure, resin modified, tricalcium phosphate pulp protectant / liner fortified with hydroxyapatite. It is designed to perform as a barrier and to protect the dentine pulp complex. Its unique, active release technology is useful in pulp capping and as a protective base/liner under dental filling materials, cements and others restorative materials.



INDICATIONS

- Direct & indirect pulp capping.
- Protective base/liner under composites, amalgams cements and other base materials.

PRODUCT BENEFITS

- Accelerated release of calcium ions
- Accelerated formation of dentine bridge
- Antibacterial
- Contains barium zirconate for better radioopacity and biocompatibility

PACKAGING

REF 30001-1 Trial Pack : 1 x 2g Syringe, 5 x Applicators Tips, 1 x Instruction Manual

REF 30001 Economy Pack : 2 x 2g Syringe, 10 x Applicators Tips, 1 x Instruction Manual

Technical Data		Standard Applied
1. Curing Time	30 – 40 Sec.	ISO 9917-2
2. Flexural Strength	80 MPa	

FUSION ULTRA D/C

Dual Curing, Resin Based Luting Cement

Low viscosity, light and chemical cure, radiopaque, two component micro fine hybrid composite for the adhesive luting of composite and ceramic restorations.



INDICATIONS

- Permanent cementation of crown, bridges and splints
- Permanent cementation of endodontic posts made of metal, reinforced composite
- Permanent cementation of implant retained crowns

PRODUCT BENEFITS

- Dual curing-light and self curing
- Low film thickness - Low solubility in oral fluids
- 2-stage polymerization allows a fast and easy clean up without compromising working time
- Fully compatible with acrylic and bis-acrylic temporary materials

PACKAGING

REF 30006 Intro Pack - Auto Mix : 1 x 9g Automix Syringe, 10 x Automix Tips, 1 x Instruction Manual

SHADES

- Translucent, A2

Technical Data		Standard Applied
1. Working Time	60 Sec	ISO 4049
2. Setting Time	3 – 4 Min	
3. Flexural Strength	90 MPa	
4. Film Thickness	25 µm	

FUSION ULTRA D/C UNIVERSAL

Dual Curing Self Adhesive Universal Resin Cement

Fusion Ultra D/C Universal Automix is a dual-cure (light- and/or self-cure), radiopaque self-adhesive resin cement designed for cementation of crowns, bridges, inlays, onlays and posts. It is supplied in an automix delivery system which can mix equal amounts of two components.

INDICATIONS

- Cementation of crowns, bridges, inlays and onlays.
- Cementation of prosthetic restorations on implant abutments and frames.
- Cementation of adhesion bridges and splints.
- Cementation of posts and cores.

PRODUCT BENEFITS

- Low, film thickness & low solubility in oral fluids
- Automix delivery system makes easy handling
- Self adhesive and provides high bond strength
- Easy mixing and handling along with excess removal
- Low post-operative sensitivities

PACKAGING

REF 30007 1 x 9 g Automix Syringe, 10 x Mixing Tips, 10 x Intraoral Delivery Tips,
1 x Instruction Manual

Technical Data		Standard Applied
1. Working Time	60 Sec	ISO 4049
2. Setting Time	3 – 4 Min	
3. Flexural Strength	90 MPa	
4. Film Thickness	25 µm	



FUSION SELF LUTE

Self Curing / Chemical Curing Resin Based Luting Cement

Self curing/chemical curing resin based composite adhesive luting cement.

INDICATIONS

- Cementation of indirect restorations (inlays, onlays, crowns, bridges, posts) made of:
- Metal and metal ceramics
- All-ceramics
- Composites

PRODUCT BENEFITS

- Exceptional handling, especially with excess cement removal
- Durability and reliability with all indirect restorations
- High bond strength and excellent marginal sealing
- Low Solubility
- Simple to use, self adhesive, no primers, silanating or bonding agents needed

PACKAGING

REF 30008 Intro Pack : 1 x 9g Automix Syringe, 10 x Automix Tips,
1 x Instruction Manual

Technical Data		Standard Applied
1. Working Time	2 – 2.30 min.	ISO 4049
2. Setting Time	3 – 4 min.	
3. Film Thickness	35 mm	



MICRON SUPERIOR

Aesthetic Fine Particle Glass Ionomer Restorative Material

Glass ionomer restorative self cure material in handmix version for restoration of primary teeth, core build up.



Technical Data		Standard Applied
1. Ratio (Powder / Liquid)	1 : 1	ISO 9917-1
2. Mixing Time	35 – 40 Sec.	
3. Setting Time	1.30 – 2 min.	
4. Compressive Strength	145 – 160 MPa	

INDICATIONS

- Permanent class III, class V restorations and small class fillings
- Restoration of deciduous teeth (especially class I)
- Restoration of smaller lesions
- Primary teeth fillings
- Fissure sealing
- Filling of cervical erosions
- Fillings prior to crown preparation

PRODUCT BENEFITS

- Self-curing/self adherent
- Different shades to achieve desired natural aesthetics
- Radiopaque and offers strong adhesion to enamel and dentine
- High and continuous fluoride release
- Coefficient of expansion similar to tooth structure

PACKAGING

- REF 30010** Powder - Liquid Kit : 1 x 15g Powder Jar, 1 x 10ml Liquid Bottle, 1 x Mixing Pad, 1 x Spoon, 1 x Instruction Manual.
- REF 30010-2** Micron Superior GIC Universal Liquid : 1 x 10ml Liquid Bottle, 1 x Instruction Manual.

SHADES

A1, A2, A3

MICRON SUPERIOR CAPSULE

Aesthetic Fine Particle Glass Ionomer Restorative Material In Capsules

Micron Superior capsule is a capsulated, prefilled, radiopaque Glass Ionomer Cement for restoration of primary teeth, core build up, restoration of class III, V and limited class I Cavities.



INDICATIONS

- Restoration of primary teeth
- Core build up
- Restoration of class III, V and Limited class I cavities

PRODUCT BENEFITS

- Optimised powder/ liquid ratio
- High wear resistance
- Simple to place, and easy to handle
- Self-curing/self adherent
- Radiopaque and offers strong adhesion to enamel and dentine
- High and sustained fluoride release
- Coefficient of expansion similar to tooth structure

PACKAGING

- REF 30010-3** 10 x Single Shade Capsules, 1 x Instruction Manual.

SHADES

A2, A3

Technical Data		Standard Applied
1. Mixing Time	10 Sec.	ISO 9917-1
2. Setting Time	2 - 2.20 min.	
3. Compressive Strength	130 - 140 MPa	

MICRON LUTING

Translucent Fine Particle Glass Ionomer Luting Cement

Micron Luting is a convenient self curing, fine particle, fluoride releasing, glass ionomer luting cement for crowns, bridges, securing inlays, onlays, post and orthodontic brackets.

INDICATIONS

- Cementation of inlays, onlays and crowns
- Cementation of posts and screws
- Attachment of metal orthodontic bands

PRODUCT BENEFITS

- High fluoride release
- Low solubility
- Translucent shade
- Very low film thickness

PACKAGING

REF 30011 Powder - Liquid Kit : 1 x 15g Powder Jar, 1 x 10ml Liquid Bottle, 1 x Mixing Pad, 1 x Spoon, 1 x Instruction Manual

Technical Data		Standard Applied
1. Ratio (Powder / Liquid)	1 : 2	ISO 9917-1
2. Mixing Time	45 – 60 Sec.	
3. Setting Time	2 Min 30 Sec.	
4. Compressive Strength	108.43 MPa	
5. Film Thickness	20 µm	



MICRON SILVER

Radiopaque Silver Alloy-Glass Ionomer Cement, Restorative

Micron Silver is PRE MIXED radiopaque, silver alloy Glass Ionomer Cement for restoration of primary teeth, core build up, restoration of class I, limited class II cavities and as a base and liner material. Micron silver which is reinforced with spherical silver alloy has high compressive and adhesion to the tooth. It has excellent tooth adhesion, sustained fluoride release and high compressive strength.

INDICATIONS

- Restoration of primary teeth
- Cases where radiopacity is required.
- Class I, limited Class II
- Temporary fillings, etc
- Long term temporary replacement of cusps.
- Class V restorations in non-aesthetic situations.
- Restorative in the field using the ART technique.

PRODUCT BENEFITS

- Intermediate restorative and base material for class I and II cavities using the sandwich technique.
- High Compressive Strength and adhesion to the tooth.
- Packable and condensable like amalgam without mercury.

PACKAGING

REF 30009 Powder - Liquid Kit : 1 x 15g Powder Jar, 1 x 10ml Liquid Bottle, 1 x Mixing Pad, 1 x Spoon, 1 x Instruction Manual

Technical Data		Standard Applied
1. Ratio (Powder / Liquid)	2 : 3	ISO 9917-1
2. Mixing Time	35 – 40 Sec.	
3. Working Time	1.30 – 2.00 min.	
4. Setting Time	4 – 5 min.	
5. Compressive Strength	150 MPa	



MICRON BIOACTIVE

Radiopaque Hydroxyapatite Modified-Glass Ionomer Cement, Restorative

Micron Bioactive is a radiopaque, Hydroxyapatite Modified-Glass Ionomer Cement for restoration of primary teeth, core build up, restoration of class I, limited class II cavities and as a base and liner material. Hydroxyapatite provides a positive environment and indirectly decreases the caries susceptibility of individuals. It has excellent tooth adhesion, sustained fluoride release, high compressive strength and mineralizing potential.



INDICATIONS

- Core build-up.
- Restoration of primary teeth.
- Cases where radiopacity is required.
- Temporary endodontic fillings.
- Class I, limited Class II, temporary fillings, etc.
- As a base or liner.
- Intermediate restoratives and base material for class I and II cavities using the sandwich technique.

PRODUCT BENEFITS

- Anticariogenic.
- Tooth coloured.
- Accelerated remineralisation.
- Excellent chemical bonding to dentin and enamel.
- Radiopaque for easy post operative diagnosis.

PACKAGING

REF 30009-1 Powder - Liquid Kit : 1 x 15g Powder Jar, 1 x 10ml Liquid Bottle, 1 x Mixing Pad, 1 x Spoon, 1 x Instruction Manual

Technical Data	Standard Applied	
1. Ratio (Powder / Liquid)	2 : 3	ISO 9917-1
2. Mixing Time	35 – 40 Sec.	
3. Setting Time	1.30 – 2.00 min.	
4. Compressive Strength	150 MPa	

MICRON DENTIN CONDITIONER

Polyacrylic Acid Cavity Conditioner

Micron Dentin Conditioner is a mild polyacrylic acid solution designed to remove the dentinal smear layer and to condition dentine, thus enhancing the bond between glass ionomer cement and the dentine.



INDICATIONS

- Removal of dentinal Smear Layer.
- To Condition the dentine.

PRODUCT BENEFITS

- Polyacrylic Acid solution enhance the bond between glass ionomer cement and the dentine.
- Micron Dentine Conditioner with low pH value.

PACKAGING

REF 30010-1 Packaging : 1 x 10ml Liquid Bottle, 1 x Instruction Manual

Technical Data	
1. pH	1.5 – 2
2. Colour	Blue

POLY ZINC +

Zinc Polycarboxylate Cement

Poly Zinc+ is a zinc polycarboxylate cement which chemically bonds to the tooth structure.

INDICATIONS

- Suitable for cementation of : Crowns, bridges and orthodontic brackets
- Cavity lining under all restoration materials
- Temporary fillings and fillings of deciduous teeth

PRODUCT BENEFITS

- Chemically bonds to tooth structure and metal appliances
- Extremely low film thickness
- Radiopaque
- High adhesive strength
- Minimal solubility in oral fluids

PACKAGING

REF 30012 Intro Pack : 1 x 30g Powder Jar, 1 x 15ml Liquid Bottle, 1 x Spoon, 1 x Mixing Pad, 1 x Instruction Manual

REF 30013 Economy Pack : 1 x 120g Powder Jar, 1 x 90ml Liquid Bottle, 1 x Spoon, 1 x Mixing Pad, 1 x Instruction Manual

Technical Data		Standard Applied
1. Mixing Time	45-60 Sec.	ISO 9917-1
2. Setting Time	2 - 2:15 min. (Luting) 2 - 2:10 min. (Base)	
3. Film Thickness	25 µm	
4. Compressive Strength	50 Mpa (Min.)	



ZINC F+

Zinc Phosphate Cement

Zinc F+ is a zinc phosphate cement which has universal application for crowns and bridges and as a liner/core or base material. Zinc F+ offers an extremely accurate fit with very high mechanical strength.

INDICATIONS

- Cementation of crowns & bridges, inlays and orthodontic brackets
- Cavity lining under all restorative materials.

PRODUCT BENEFITS

- Seals dentinal tubules and minimizes post-operative sensitivity
- Low film thickness
- High Compressive strength
- Radiopaque
- Neutralizes the harshness of phosphoric acid
- Apply directly to prepared dentinal tissue

PACKAGING

REF 30014 Intro Powder - Liquid Kit : 30g Powder Jar, 15ml Liquid Bottle, 1 x Spoon, 1 x Instruction Manual.

REF 30014-1 Economy Powder - Liquid Kit : 120g Powder Jar, 90ml Liquid Bottle, 1 x Spoon, 1 x Instruction Manual.

Technical Data		Standard Applied
1. Mixing Time	45-60 Sec.	ISO 9917-1
2. Setting Time	3 .15 min (Luting) 3.10 min (Base)	
3. Film Thickness	22 µm	
4. Compressive Strength	105 MPa	



ZINCONOL

Polymer Reinforced ZOE Cement

Intermediate Restorative Material (IRM) for class I and class II restorations.



INDICATIONS

- As a base under amalgam and non resin restorations
- Temporary restoration in emergency treatments
- Sealing coronal portion of teeth under endodontic treatment

PRODUCT BENEFITS

- Excellent physical properties due to added unique polymer reinforcing agents
- High compressive strength-High tensile strength
- Low film thickness, low solubility and excellent abrasion resistance
- High strength comparable to zinc phosphate cement

PACKAGING

REF 30015 Powder - Liquid Kit : 1 x 15g Powder Jar, 1 x 10ml Liquid Bottle, 1 x Mixing Pad, 1 x Spoon, 1 x Dispensing Dropper, 1 x Instruction Manual

REF 30015-1 Powder - Liquid Kit : 1 x 75g Powder Jar, 1 x 40ml Liquid Bottle, 1 x Mixing Pad, 1 x Spoon, 1 x Dispensing Dropper, 1 x Instruction Manual

Technical Data		Standard Applied
1. Mixing Time	45-60 Sec.	ISO 3107
2. Working Time	2 min-30 sec.	
3. Setting Time	4-6 Min.	
4. Compressive Strength	35 MPa	

ZITEMP

ZOE Cement Quick Set

Easy mix rapid setting zinc oxide - eugenol cement for thermal insulation and temporary restoration.



INDICATIONS

- Ideal temporary sealant and filling material for cavities after removal of carious dentine before permanent restoration
- Perfect cavity liner
- Temporary fixation of crowns and bridges
- Ideal cavity liner under most restorative materials

PRODUCT BENEFITS

- Easy mix powder liquid composition
- Rapid setting
- Effective thermal and chemical insulator
- Excellent flowability
- High compressive strength
- Excellent cavity liner compatible under most restorative materials

PACKAGING

REF 30016 Powder - Liquid Kit : 1 x 15g Powder Jar, 1 x 10ml Liquid Bottle, 1 x Mixing Pad, 1 x Spoon, 1 x Dispensing Dropper, 1 x Instruction Manual

Technical Data		Standard Applied
1. Mixing Time	45-60 Sec.	ISO 3107
2. Setting Time	5 - 7 Min.	
3. Compressive Strength	10 - 20 MPa	

CALULTRA

Calcium Hydroxide Cavity Liners

CalUltra is a two-component, rigid-setting, self-curing lining material designed for use as a direct and indirect pulp capping agent as a protective liner under dental filling materials, cements and other base materials. It has no effect on the polymerization of composite filling materials

INDICATIONS

- Direct and Indirect pulp capping agent
- Perfect cavity liner under all filling materials

PRODUCT BENEFITS

- Protective barrier between restorative materials and deep vital dentin.
- Quick setting time
- Excellent handling characteristics
- Protects the pulp and promotes the formation of secondary dentin

PACKAGING

REF 40046 Net contents: 24g, Base Paste/Catalyst Paste Tubes, 1 x Mixing Pad,
1 x Instructional Manual

Technical Data

1. Setting Time	1 Min.
2. Compressive Strength	10 MPa



CEMENTS & LINERS PRODUCTS

DOLO

EDTA Gel For Root Canals

Water soluble gel containing 17% EDTA with 10% carbamide peroxide for chemical and mechanical root canal preparation.



INDICATIONS

- For chemical-mechanical preparation of root canals
- Cleansing and enlarging of calcified root canal
- Contains appropriate lubricant to minimize potential of file breakage

PRODUCT BENEFITS

- Helps in mechanical as well as chemical cleansing of root canal preparations
- 17% EDTA helps in chelating the calcium salts
- Gel helps lubricate endodontic instrument and makes penetration easier
- 10% carbamide peroxide promotes internal bleaching on irrigation with hypochlorite solution
- Syringe tip delivery. Unsurpassed chelating action

PACKAGING

- REF 40002** Trial Pack : 1 x 2g Syringe, 5 x Applicator Tips, 1 x Instruction Manual
- REF 40002-1** Intro Pack : 1 x 3g Syringe, 10 x Applicator Tips, 1 x Instruction Manual
- REF 40003** Economy Pack : 4 x 2g Syringes, 20 x Applicator Tips, 1 x Instruction Manual

Technical Data

1. pH	3.42 %
2. Consistency	30 mm
3. Film Thickness	58 µm

EDTA SOLUTION

17% EDTA Solution

Disodium Edetate solution with neutral pH for chemical, mechanical cleansing and enlarging of root canals.



INDICATIONS

- Rapid root canal cleansing and shaping during instrumentation
- Helpful in opening calcified root canals

PRODUCT BENEFITS

- 17% solution and neutral pH cleanses root canals rapidly
- Helpful in enlarging of canals

PACKAGING

- REF 40004** 1 x 15 ml Glass Bottle, 1 x Dispensing Dropper, 1 x Instruction Manual
- REF 40004-1** 1 x 100 ml Glass Bottle, 1 x Dispensing Dropper, 1 x Instruction Manual

Technical Data

1. pH	7.25 %
-------	--------

CITROGEN GEL

20% Citric Acid Gel

Citrogen is a 20 % citric acid gel. Used as a chelating agent for removal of smear layer and conditioning of dentine surfaces. It irrigates, cleans and conditions root canal walls.

INDICATIONS

- Conditioning of prepared root canal systems
- Removes mineral and smear layers
- Lubrication during root canal preparation
- Conditioning of dentine surfaces

PRODUCT BENEFITS

- Promotes the repair of periodontal lesions
- Prevents the appearance of long junctional epithelial attachments
- Detoxification of implant surface affected by Peri-Implantitis
- Syringe for direct application

PACKAGING

REF 40045 1 x 10ml Syringe, 5 x Applicator Tips, 1 x Instructional Manual

REF 40045-1 1 x 30ml Syringe, 10 x Applicator Tips, 2 x 5ml Empty Syringe, 1 x Instructional Manual

Technical Data

1. pH	1.5 - 2 %
-------	-----------



CALPLUS

Calcium Hydroxide Paste With Iodoform

Premixed Calcium hydroxide paste containing iodoform with improved radiopacity and antimicrobial effect.

INDICATIONS

- For direct & indirect pulp capping and pulpotomy
- Apexifications and hard tissue formations
- Temporary filling material for infected root canals
- Treatment of root resorption
- Acid protection when applying etch technique
- Perfect cavity liner under all filling materials

PRODUCT BENEFITS

- Non hardening paste with oil base
- Prolonged release of calcium hydroxide helps create secondary dentine
- Excellent biocompatibility with no toxic effects on cells
- Easy handling and easy direct application
- Ideal for infected root canals and vital pulpotomies in deciduous teeth.
- Can be used in conjunction with gutta percha points and regular root canal sealants

PACKAGING

REF 40005 Trial Pack : 1 x 2g Syringe, 5 x Applicator Tips, 1 x Instructional Manual

REF 40005-1 Intro Pack : 1 x 3g Syringe, 10 x Applicator Tips, 1 x Instructional Manual

REF 40006 Economy Pack : 4 x 2g Syringes, 20 x Applicator Tips, 1 x Instructional Manual



Technical Data

1. Consistency	28 mm
2. Film Thickness	68 µm

CALCIGEL

All Purpose Calcium Hydroxide Paste

Premixed water based radiopaque calcium hydroxide paste with barium sulphate for endodontic indications.



INDICATIONS

- Apexogenesis
- Apexification
- Temporary root canal filling
- Internal & external root resorption

PRODUCT BENEFITS

- High pH (pH 12) helps neutralize free acids of obturating cements and restorative materials
- Reduces hypersensitivity of dentine
- 45% calcium hydroxide content helps the neoformation of secondary dentine.
- Radiopacity
- Perfect pulp protection
- Syringe for direct application

PACKAGING

REF 40007	Trial Pack : 1 x 2g Syringe, 5 x Applicator Tips, 1 x Instruction Manual
REF 40007-1	Intro Pack : 1 x 3g Syringe, 10 x Applicator Tips, 1 x Instruction Manual
REF 40007-2	Trial Pack : 1 x 2.2g Syringe, 20 x Applicator Tips, 1 x Instruction Manual
REF 40008	Economy Pack : 4 x 2g Syringe, 20 x Applicator Tips, 1 x Instruction Manual

Technical Data

1. Consistency	40 mm
2. Film Thickness	20 µm
3. Setting Time	35 Min.
4. pH	11.97%

CERAFILL RCS

Bioceramic Root Canal Filling and Sealing Material

Cerafill RCS root canal filling and sealing material is a ready to use injectable premixed filling and sealing material which is based on the bioceramic technology. It is a alumina free calcium silicate based material with excellent handling characteristics and superior physical properties. It is a radiopaque material which requires water to set and harden.



INDICATIONS

- Permanent root canal obturation
- Root canal sealer

PRODUCT BENEFITS

- Bioceramic technology for optimal results
- Permits adequate working time.
- Syringe for direct application
- Optimal flowability allows the sealer to fill difficult access areas
- The antimicrobial property increases the success rate of endodontic treatments
- Radiopaque
- Non resorbable

PACKAGING

REF 40037	Trial Pack: 1x 1.2g Premixed Syringe, 7 x Applicator Tips, 1 x Instruction Manual.
REF 40037-1	Regular Pack: 1x 2g Premixed Syringe, 10 x Applicator Tips, 1 x Instruction Manual.
REF 40037-2	Regular Pack: 1x 2g Premixed Syringe, 10 x Applicator Tips, 1 x Instruction Manual.

CALAPEX

Non-eugenol, Calcium Hydroxide Based Polymeric Root Canal Sealant

CalApex is an insoluble calcium hydroxide cement for the permanent obturation of root canals in combination with gutta-percha points. It is a two-component, base and activator system supplied in two tubes or in a Cartridge.

INDICATIONS

- Permanent obturation after pulp extirpation and chemomechanical preparation

PRODUCT BENEFITS

- Radio opaque
- Ideal for infected root canals
- Non shrinking formulation
- Excellent physical and biological properties

PACKAGING

- REF 40041** 1 x 20g Automix Cartridge, 20 x Mixing Tips, 1 x Instruction Manual.
REF 40041-1 Net Content 20g, 1 x Base Paste, 1 x Catalyst Paste, 1 x Mixing Pad, 1 x Instruction Manual.
REF 40041-2 1 x 20g Cartridge, Base & Catalyst, 1 x Mixing Spatula, 1 x Mixing Pad, 1 x Instruction Manual.

Technical Data		Standard Applied
1. Mixing Time	30 Sec.	ISO 6876
2. Working Time	30 Min.	
3. Setting Time	45 - 60 Min.	
4. Flow	17 mm	
5. Solubility	> 2%	
6. Film Thickness	45 µm	



ZICAL

ZOE Root Canal Sealer

Zical is a zinc oxide-eugenol based paste for the permanent obturation of root canals in combination with gutta percha.

INDICATIONS

- Root canal sealing using gutta purcha points

PRODUCT BENEFITS

- Based on Grossman's formula
- Radiopaque and non staining
- Excellent thermal insulation
- Adequate working time
- Excellent lubricating qualities
- Low zinc alleviate cytotoxic and inflammatory effects of the tissues
- Accurate Proportions

PACKAGING

- REF 40009** Powder Liquid Kit : 1 x 15g Powder Jar, 1 x 10ml Liquid Bottle, 1x Spoon, 1 x Mixing Pad, 1 x Dispensing Dropper, 1 x Instruction Manual
REF 40010 Automix Mix Kit : 1 x 15g Cartridge (Base / Catalyst), 20 x Auto Mix Tips, 1 x Instruction Manual
REF 40011 Manual Mix Kit : 1 x 15g Cartridge (Base / Catalyst), 1 x Mixing Spatula, 1 x Mixing Pad, 1 x Instruction Manual

Technical Data		
1. Mixing Time	30 Sec.	ISO 6876
2. Working Time	30 Min.	
3. Setting Time	45 - 60 Min.	
4. Flow	17 mm	
5. Solubility	> 2%	
6. Film Thickness	45 µm	



ZICAL ULTRA P/L

ZOE Root Canal Sealer

Zical ultra is a ZOE based sealer for permanent filling of dental root canals. Can tightly seal the apex of the root and the prepared root canal and can be easily removed with Gutta Percha point when refilling is necessary. Very long working time and excellent lubricating qualities.



INDICATIONS

- Root canal filling for infected root canal treatment
- Root canal sealing using Gutta-Percha points

PRODUCT BENEFITS

- Based on Grossman's Formula
- Radio opaque
- Non-staining and non-irritating
- Excellent thermal insulation
- Excellent lubricating qualities
- Adequate working time

PACKAGING

REF 40044 Powder Liquid Kit : 1 x 15g Powder Jar, 1 x 10ml Liquid Bottle, 1 x Spoon, 1 x Mixing Pad, 1 x Dispensing Dropper, 1 x Instruction Manual

Technical Data

1. Mixing Time	30 Sec.	ISO 6876
2. Working Time	30 Min.	
3. Setting Time	45 - 60 Min.	
4. Flow	17 mm	
5. Solubility	> 2%	
6. Film Thickness	45 µm	

ZICAL ULTRA

ZOE Root Canal Sealer(Automix / Manual Mix Cartridge)

Zical ultra Root Canal Sealer is a ZOE based zinc oxide-eugenol sealer in paste-paste form for permanent filling of root canals. This sealant has been specially designed to tightly seal the apex of the root and the prepared root canal.



INDICATIONS

- Root canal filling for infected root canal treatment
- Root canal sealing using Gutta-Percha points

PRODUCT BENEFITS

- Radio opaque
- Non-staining and non-irritating
- Excellent thermal insulation
- Excellent lubricating qualities
- Easy manipulation and application

PACKAGING

REF 40043 Auto Mix Pack: 1 x 15g Automix Cartridge, 20 x Automix Tips, 1 x Instructional Manual

REF 40042 Manual Mix Pack: 1 x 15g Cartridge, Base & Catalyst Paste, 1 x Mixing Spatula, 1 x Mixing Pad, 1 x Instructional Manual

Technical Data

Standard Applied

1. Mixing Time	30 Sec.	ISO 6876
2. Working Time	30 Min.	
3. Setting Time	45 - 60 Min.	
4. Flow	17 mm	
5. Solubility	> 2%	
6. Film Thickness	45 µm	

ENDOSEAL

Root Canal Obturation Cement

Endoseal is radiopaque, non-resorbable paste for the permanent obturation of the root canal. Its composition is well tolerated by the tissues and provides anti-inflammatory, antiseptics and germicidal actions.

INDICATIONS

- Permanent root canal filling and sealing in dental procedures with systematic insertion of points

PRODUCT BENEFITS

- Perfect root canal filling material
- Long lasting antiseptic and anti-inflammatory activity
- Radiopaque
- Perfect marginal sealing
- Non resorbable

PACKAGING

REF 40031 Powder Liquid Kit : 1 x 15g Powder Jar, 1 x 10ml Liquid Bottle, 1 x Spoon, 1 x Mixing Pad, 1 x Dispensing Dropper, 1 x Instruction Manual

REF 40031-1 Powder Liquid Kit : 1 x 20g Powder Jar, 1 x 10ml Liquid Bottle, 1 x Spoon, 1 x Mixing Pad, 1 x Dispensing Dropper, 1 x Instruction Manual

Technical Data		Standard Applied
1. Mixing Time	45 - 60 Sec.	ISO 6876
2. Working Time	25 Min.	
3. Setting Time	55 Min - 30 Sec.	
4. Flow	48 μ m	
5. Solubility	> 2%	
6. Film Thickness	20 - 25 mm	



NANOSEAL-S

VPS Root Canal Sealer

NanoSeal-S is a cold flowable polydimethylsiloxane based root canal sealer with micro silver.

INDICATIONS

- Root canal sealing using gutta purcha points

PRODUCT BENEFITS

- Radiopaque and eugenol free
- Excellent flow
- Expands by 0.2% to give a tight seal

PACKAGING

REF 40001-1 Manual Mix : 1 x 10g Cartridge (Base / Catalyst), 1 x Mixing Spatula, 1 x Mixing Pad, 1 x Instruction Manual

Technical Data		Standard Applied
1. Mixing Time	45 - 60 sec.	ISO 6876
2. Working Time	<10 Min.	
3. Setting Time	10 - 15 Min.	
4. Film Thickness	65 mm	
5. Solubility	< 2%	



HYPOSOL

3%, 5% Sodium Hypochlorite Solution

The perfect solution for the irrigation, debridement and disinfection of root canals during endodontic treatment



INDICATIONS

- For disinfection of root canals
- To irrigate canals after filling with appropriate chelating agent

PRODUCT BENEFITS

- Irrigates root canal
- Helps debride root canal
- Disinfects root canal during instrumentation

PACKAGING

- REF 40019** 1 x 500ml Plastic Bottle, 3%
- REF 40020** 1 x 500ml Plastic Bottle, 5%

Technical Data

1. pH	12.10
-------	-------

PULP-X

Pulp Devitalizer

Pulp-X is a preparation for devitalization of the pulp.



INDICATIONS

- For Pulp devitalization
- For residual devitalization after removal of non-vital pulp tissue

PRODUCT BENEFITS

- Fast acting-pain releasing formula

PACKAGING

- REF 40021** Jar Pack : 1 x 6g Plastic Jar, 1 x Instructional Manual
- REF 40022** 1 x 3g Syringe, 10 x Applicator Tips, 1 x Instructional Manual
- REF 40022-1** 2 x 3g Syringe, 10 x Applicator Tips, 1 x Instructional Manual

ALVOCURE

Pengha Iodoform Paste

Alvocure is a dry socket treatment and post extraction dressing. It provides a soothing effect throughout the healing process. Its fibrous consistency allows for easy filling of the socket.

INDICATIONS

- Treatment of dry sockets
- Post extraction dressing

PRODUCT BENEFITS

- Quick and easy one step treatment
- Antimicrobial action due to the presence of iodoform
- Fibrous consistency - very easy to apply

PACKAGING

REF 40023 Jar Pack : 1 x 12g Jar, 1 x Instruction Manual.



CARVENE

Gutta Percha Solvent

d-Limonene based gutta percha solvent for removing gutta percha at the time of root canal re-treatment.

INDICATIONS

- To remove all types of root canal filling materials including Zinc Oxide-Eugenol cement
- As a disinfectant/cleaner for endodontic instruments
- For removing gutta percha at the time of root canal re-treatments

PRODUCT BENEFITS

- Non hazardous/non carcinogenic
- Less volatile
- Based on natural substances (d-limonene), does not cause irritation to oral mucosa and periapical tissue
- Evaporation of solvent is less due to low volatility

PACKAGING

REF 40030 1 x 10ml Glass Bottle, 1 x Dispensing Dropper, 1 x Instruction Manual.



FORMACRESOL

Tricresol Formaldehyde Solution

Powerful pulp devitalizer and disinfectant for severely infected root canals.



INDICATIONS

- Treatment of severely infected root canals
- Effective pulp devitalizer and disinfectant
- Root canal dressing

PRODUCT BENEFITS

- Strong antibacterial properties makes it efficient in vital pulpotomy
- Effective in treatment of severely infected root canals

PACKAGING

REF 40014 1 x 15ml Glass Bottle, 1 x Dispensing Dropper,
1 x Instruction Manual.

CAMPHENOL

Camphorated Para Chlorophenol Solution

Active disinfectant for the treatment of infected root canals and periapical infections.



INDICATIONS

- Disinfection of the dentine after cavity preparation
- Disinfection after pulpectomy and pulp dressing
- Treatment of post traumatic inflammation
- Disinfection of root canal

PRODUCT BENEFITS

- Actively disinfects infected root canal
- Effectively cures periapical infections
- Oily composition helps it remain active for long period

PACKAGING

REF 40015 1 x 15ml Glass Bottle, 1 x Dispensing Dropper,
1 x Instruction Manual.

MTA PLUS

Vital Pulp Therapy & Root Treatment Material

MTA Plus is a specialized dental cement derived from advanced material research in inorganic hydraulic powder technology. MTA Plus is indicated for both vital pulp therapy and Endodontic procedures.

INDICATIONS

- Cavity lining/base & Pulp-capping
- Pulpotomies & Obturation/Sealing
- Apexification & Root-end filling
- Perforation healing & Root resorption

PRODUCT BENEFITS

- Finer powder for smoother, easier mixing, handling and placement
- Handy packaging-protects powder in desiccant-lined container
- Dispense powder as needed
- Optional gel for stability and washout resistance
- Non-cytotoxic & anti-microbial in vitro against common bacteria and E. Faecalis
- No special equipment or dispensing instruments needed

PACKAGING

- REF 40024** Trial Pack : 1 x 1g powder Jar, 1 x 2cc Gel Bottle, 1 x Measuring spoon, 1 x Instruction Manual
- REF 40025** Intro Pack : 1 x 2g powder Jar, 1 x 2cc Gel Bottle, 1 x Measuring spoon, 1 x Instruction Manual
- REF 40032** Economy Pack : 1 x 6g powder Jar, 1 x 9cc Gel Bottle, 1 x Measuring spoon, 1 x Instruction Manual
- REF 40024-1** MTA PLUS AQUA: 1 X 0.14g Powder, 1 X 0.5ml Liquid, 1 x Instruction Manual.

Technical Data		Standard Applied
1. Mixing Time	45 – 60 sec.	ISO 6876
2. Working Time	25 Min.	
3. Setting Time	55 Min 30 Sec.	
4. Film Thickness	45 µm	
5. Solubility	< 2	



CITROGEN

(20% Citric Acid Liquid) Dentine Conditioner and Chelating Agent

Citrogen is a 20% Citric Acid liquid used as a Chelating agent for removal of smear layer and conditioning of dentine surfaces.

INDICATIONS

- Conditioning of prepared root canal systems.
- Removes mineral and smear layers
- Lubrication during root canal preparation
- Conditioning of dentine surfaces

PRODUCT BENEFITS

- Effective smear layer removal
- Safe and easy application
- Enhances mechanical cleaning of root canal

PACKAGING

- REF 40047** 1 x 50ml Bottle, 1 x Dropper, 1 x Instruction Manual
- REF 40048** 1 x 100ml Bottle, 1 x Dropper, 1 x Instruction Manual

Technical Data	
1. pH	1.75



5 STEP ENDO SMART KIT

5-Steps Systematic Endodontic Treatment Kit For Predictable & Efficient Endodontics.

This kit has been designed by endodontic experts to cater to the need of clinicians practicing endodontics. The kit is a one stop solution for predictable endodontics. The products have been thoroughly researched to deliver superior performance.



INDICATIONS

- A comprehensive material kit for endodontic treatment.

PRODUCT BENEFITS

- Systematic endodontic treatment kit for predictable & efficient endodontics.

PRODUCT DETAILS

- CALCIGEL : Calcium Hydroxide Paste with Barium Sulphate.
- CALPLUS : Calcium Hydroxide Paste containing Iodoform.
- PULP-X : Powerful pulp devitalizer.
- ORAFIL-LC : Resin based temporary cement.
- ZICAL : Zinc oxide eugenol based in paste form.

PACKAGING

- REF 40036** 1 x 2g Syringe Calcigel, 5 x Applicator Tips (Ref : 40007), 1 x 2g Syringe Calplus, 5 x Applicator Tips (Ref : 40005), 1 x 2g Syringe Dolo, 5 x Applicator Tips (Ref : 40002), 1 x 3g Syringe Pulp-X, 5 x Applicator Tips (Ref : 40022), 1 x 3g Syringe Orafil-LC (Ref : 11002-1), 1 x 2g Syringe Chlor X Gel, 5 x Applicator Tips (Ref : 40026-2), 1 x 15g Cartridge Zical Automix, Base & Catalyst Paste, 10 x Automix Tips (Ref : 40010), 1 x Instruction Manual

EPOSOLV

Solvent For Resin & Phenolic Compounds

EpoSolv solvent is used for removing of resin sealers and phenolic compounds at the time of root canal re-treatment.



INDICATIONS

- EpoSolv is a solvent for epoxy and other resin sealers during endodontic re-treatment.
- EpoSolv aids in the softening of phenolic resin type fillings.

PRODUCT BENEFITS

- EpoSolv does not provoke excessive salivation if it comes into contact with the mucosa.
- It has low volatility due to presence of formamide.

PACKAGING

- REF 40035** 1 x 15ml Glass Bottle, 1 x Dispensing Dropper, 1 x Instruction Manual

Technical Data		Standard Applied
1. Total Fluoride Content	13 %	ISO 17730

ZINC OXIDE / EUGENOL

Zinc Oxide Powder / Eugenol

Extra pure, Arsenic free Zinc Oxide Powder and Eugenol oil to be used as obtundent for the relief of minor dental pain and to form sedative dental dressing with zinc oxide.

INDICATIONS

- Used as Root canal sealer with G P cones
- Used for temporary dressing
- Mixed with eugenol and is used as a temporary cement. Eugenol Oil is used for temporary relief of localized dental pain.
- Ideal cavity liner under most restorative materials

PRODUCT BENEFITS

- Chemically pure Eugenol Oil with increased effectiveness.
- Arsenic free.
- Makes a smooth paste with eugenol.
- Provides sufficient compressive strength.
- Forms a sedative dressing or lining under non composite resin.

PACKAGING

Zinc Oxide

REF 40028 1 x Jar, 110g, 1 x Instruction Manual

Eugenol

REF 40016 1 x 15ml Glass Bottle, 1 x Dispensing Dropper, 1 x Instruction Manual

REF 40017 1 x 30ml Glass Bottle, 1 x Dispensing Dropper, 1 x Instruction Manual

REF 40018 1 x 110ml Glass Bottle, 1 x Dispensing Dropper, 1 x Instruction Manual



Technical Data		Standard Applied
1. Mixing Time	60 sec.	ISO 3107
3. Setting Time	4 - 6 Min.	
4. Compressive Strength	20 MPa	
5. Acid Soluble Arsenic free	2 mg/kg ²	

MAXGENOL

Liquid for temporary cementation with zinc oxide

Has an obtundent effect and reacts with zinc oxide to form a temporary cement for sedative dental dressing or lining under non-composite resin restoration.

INDICATIONS

- For temporary relief of localized dental pain
- Combined with Zinc Oxide to form a temporary sedative dressing

PRODUCT BENEFITS

- Relieves localized pain
- Makes a smooth paste with zinc oxide
- Forms a sedative dressing with zinc oxide
- High fluidity for easy application
- Improved setting properties

PACKAGING

REF 40038 1x 15ml Glass Bottle, 1 x Dispensing Dropper, 1 x Instruction Manual

REF 40039 1x 30ml Glass Bottle, 1 x Dispensing Dropper, 1 x Instruction Manual

REF 40040 1x 110ml Glass Bottle, 1 x Dispensing Dropper, 1 x Instruction Manual



CERAFILL PUTTY

Bioceramic material for permanent root repair

Cerafill Putty is a ready-to-use, premixed, bioceramic paste developed for pulp capping, permanent root repair and Permanent Obturation / Filling of root canals. It is an insoluble, radiopaque composition, which requires the presence of water to set and harden.



INDICATIONS

- Pulp Capping
- Permanent Obturation / Filling of root canals
- Repair of Root Perforation
- Repair of Root Resorption
- Root End Filling
- Apexification

PRODUCT BENEFITS

- Ideal putty consistency
- Extremely resistant to washout
- Superior handling properties
- Excellent radiopacity and increases strength

PACKAGING

- REF 40049** 1 x 1.2g Premixed Syringe, 7 x Applicator Tips,
1 x Instruction Manual
- REF 40049-1** 1 x 2g Premixed Syringe, 10 x Applicator Tips,
1 x Instruction Manual



ENDODONTICS PRODUCTS

FUSION CRYSTA ORTHODONTIC ADHESIVE KIT

Light Cure Orthodontic Kit

Fusion Crysta Orthodontic Adhesive Kit is a light curing composite kit. It is used to Bond Metal & Ceramic brackets to tooth surface and for cementation of molar bands.

INDICATIONS

- Used for Bonding Metal & Ceramic brackets to tooth surface and for cementation of molar bands.

PRODUCT BENEFITS

- Highly translucent adhesive designed to compliment traditional and LED curing lights
- Superior physical properties
- The primer contains the revolutionary 10-MDP
- MDP promotes physical and chemical adhesion
- High enamel bond strengths
- Excellent handling properties

PACKAGING

REF 10022 Trial Pack : 1x 4g Syringes, 1 x Instruction Manual

REF 10023 Intro Pack : 2 x 4g Syringes, 1 x Instruction Manual

REF 10024 MDP Orthodontic Kit : 1 x 4g Syringe Fusion Crysta Adhesive, 1x 5ml Bottle Fusion Crysta Adhesive Primer, 1 x 5ml Syringe Actino Gel + 10 Applicator Tips, 1 x Instruction Manual.

REF 10024-1 REGULAR Orthodontic Kit : 1 x 4g Syringe, Fusion Crysta Adhesive, 1 x 5ml Bottle, Fusion Bond 5, 1 x 5ml Syringe, Actino Gel, 10 x Applicator Tips, 1 x Instruction Manual



Technical Data	Standard Applied	
1. Flexural Strength	60 - 90 MPa	ISO 4049, 29022

FUSION CRYSTA ADHESIVE PRIMER

Light Cured Self Etch Orthodontic Primer

Fusion Crysta Adhesive Primer is a light-cured single-component orthodontic primer that combines etching, priming and bonding in one bottle. It is an ethanol water based dental adhesive containing 10- Methacryloyloxydecyl Dihydrogen Phosphate (10-MDP), a functional monomer which helps in bonding to dentin and enamel.

INDICATIONS

- Used for adhesion of orthodontic brackets when used along with an adhesive

PRODUCT BENEFITS

- Single bottle with etch, prime & bond provide clinically acceptable bond strength
- The primer contains the revolutionary 10-MDP
- (10-MDP) a functional monomer which helps in bonding to dentin, cut and un-cut enamel.
- MDP promotes physical and chemical adhesion
- No post operative sensitivity
- High bond strength and durability

PACKAGING

REF 10021 Regular Pack : 1 x 5ml Bottle, 5 x Mixing Wells, 10 x Micro Brushes
1 x Instruction Manual.

Technical Data	Standard Applied	
1. Bond Strength	20 Mpa	ISO 29022



PLATINA HI-GLOSS

Composite Polishing Paste

Platina Hi-Gloss is an aluminium oxide paste for final polishing of direct or indirect anterior and posterior resin restorative materials. It contains potassium nitrate topical desensitizer for patient comfort.



INDICATIONS

- Final polishing of composite restorations or veneers

PRODUCT BENEFITS

- Non splatter-non drying formula
- Spearmint flavored
- With potassium nitrate topical desensitizer

PACKAGING

REF 50001 1 x 4g Syringe, 1 x Instruction Manual

Technical Data

1. Consistency	29 mm.
2. Film Thickness	60 µm

FUSION NANOCOAT

Light Cured Protective Varnish

Fusion Nano Coat is a revolutionary, light cured, protective coating which effectively seals the surface to create smooth and glossy surface on the glass ionomer and composite restorations. It can also be used to polish areas such as posterior fissures or interproximal areas of indirect composite restorations.



INDICATIONS

- Protects glass ionomer fillings from drying during the first hour after placement
- Increase wear resistance of restoration
- Glossy surface for composite resins

PRODUCT BENEFITS

- Greatly enhances the esthetics of restorations
- Provides improved stain resistance
- Superior bond durability for long lasting gloss

PACKAGING

REF 20013 1 x 5ml Squeeze Bottle, 1 x Instruction Manual

SPECTRA

Prophylaxis Paste

Spectra is an abrasive paste used for polishing and fluoridation after scaling. It's mechanical action produces a smooth surface without eroding the dental enamel. It is also used for polishing fillings and removal of tobacco & food stains. The different flavours added produce a fresh, pleasant tingling sensation and relieves the irritation caused by mechanical action of the scaling.

INDICATIONS

- Polishing after scaling
- Removal of dental tartar

PRODUCT BENEFITS

- Oil free formulation
- Fluoride release formula
- Splatter free paste
- Excellent stain removal and polishing
- Available in five different flavors with fine, medium & coarse grit

PACKAGING

REF 50005	1 x 200g Plastic Jar, (Fresh Mint), 1 x Instruction Manual
REF 50005-1	1 x 340g Plastic Jar, (Fresh Mint), 1 x Instruction Manual
REF 50006	1 x 75g Plastic Jar, (Fresh Mint), 1 x Instruction Manual
REF 50007	1 x 75g Plastic Jar, (Fresh Fruit), 1 x Instruction Manual
REF 50008	1 x 75g Plastic Jar, (Fresh Strawberry), 1 x Instruction Manual
REF 50009	1 x 75g Plastic Jar, (Fresh Orange), 1 x Instruction Manual
REF 50010	1 x 75g Plastic Jar, (Fresh Pineapple), 1 x Instruction Manual

Technical Data

1. Consistency	20 mm.
2. Film Thickness	110 μ m
3. Sodium Fluoride Conc.	1%



ULTRA DRY

Drying Agent

UltraDry is a fast drying, cleaning and degreasing agent for dental surfaces.

INDICATIONS

- To remove moisture from dental surfaces
- To dry tooth surface prior to applying pit and fissure sealants (PF Seal, Prevest DenPro Ltd.) and other materials which are adversely affected by the presence of moisture.

PRODUCT BENEFITS

- Excellent hydrophobic properties
- High fluidity for easy application

PACKAGING

REF 40033	Intro Pack : 1 x 1.2ml Syringes + 5 Applicator Tips, 1 x Instruction Manual
REF 40034	Economy Pack : 1 x 10ml in a Plastic Bottle, 1 x Instruction Manual



A.C.E

Ceramic Repair Kit

Comprehensive set for intraoral repairs of ceramic and composite restorations. The entire set is ergonomically arranged and enables you to work from left to right. Due to its outstanding high bonding values, this system is a reliable assistant in inconvenient situations. All the components are available separately.



INDICATIONS

- Repair of porcelain fused to metal crowns & bridges, inlays and onlays and all ceramic restoration.

PRODUCT BENEFITS

- Comprehensive set for intraoral repairs of ceramic and composite restorations.
- A.C.E. ceramic repair kit comprises the necessary bonding and veneering materials

PRODUCT DETAILS

- Silane-X : Silanating Agent
- CeraEtch : 5% Hydrofluoric Acid
- Renew Universal : 10 MDP + 4 Meta
- Fusion Flo : Flowable composite

PACKAGING

REF 50002 1 x 1.2ml Syringe CeraEtch + 5 Applicator Tips (Ref : 10012), 1 x 1.2ml Syringe Silane-X + 5 Applicator Tips (Ref : 10014), 1 x 1.2ml Syringe Fusion Flo, Opaque + 5 Applicator Tips (Ref : 20008-2), 1 x 1.2ml Syringe Renew Universal + 5 x Applicator Tips (Ref : 10017), 1 x Instruction Manual.

Technical Data		Standard Applied
1. Curing Time	30-40 Sec.	IHS
2. pH	2-3	



CERAMIC REPAIR PRODUCTS

COPAL-F

Copal Cavity Varnish with Fluoride

Protective varnish based on Copal gum for insulating exposed dentine and providing thermal barrier.

INDICATIONS

- Ideal cavity liner and dentinal tubule sealer
- Assures perfect protection to exposed dentine
- Intermediary varnish prior to insertion of amalgams, cements or composites

PRODUCT BENEFITS

- Insulates exposed dentine
- Reduces penetration of fluids into the tooth
- Fluoride provides thermal barrier for deep restoration
- Fluoride alleviates thermal sensitivity
- Needs no thinners
- Compatible with most amalgams, cements and composites
- High fluidity for easy application

PACKAGING

REF 40027 1 x 15ml Glass Bottle, 1 x Dispensing Dropper, 1 x Instruction Manual



FLUORODIP BIOACTIVE

Varnish For Desensitizing and Re-mineralization

FluoroDip Bioactive is a sodium fluoride containing dental desensitizing varnish fortified with bio-glass for enhanced remineralization of enamel and dentine.

INDICATIONS

- Desensitizing and re-mineralization of enamel and dentine.

PRODUCT BENEFITS

- Contains Bioglass
- Effective Re-mineralization
- Easy Application

PACKAGING

REF 80001 1 x 10ml Dropper Bottle, (Spearmint Flavour), 1 x Instruction Manual

REF 80001-2 10 x 0.5 ml Monodose Vials, 10 x Applicator Brushes, 10 x Mixing Wells, 1 x Instruction Manual (Spearmint Flavour)

REF 80001-3 10 x 0.5 ml Monodose Vials, 10 x Applicator Brushes, 10 x Mixing Wells, 1 x Instruction Manual (Strawberry Flavour)



Technical Data	Standard Applied	
1. Total Fluoride Content	13 %	ISO 17730

REVEAL

Caries Indicator

Caries indicator that aids in detecting dental caries and helps minimise the removal of re-mineralizable dentin, thus securing the vitality of pulp and preserves maximum healthy tooth structure



INDICATIONS

- Visual differentiation between infected carious dentine & sound, re-mineralizable dentine by its ability to selectively dye the carious dentine.

PRODUCT BENEFITS

- Dark green color dye provides strong contrast with both dentine and the pulp
- Stains outer infected dentine only
- Does not stain uninfected (affected) dentine
- Detects caries in difficult to see places
- Propylene glycol base formulation more accurate than water based formula

PACKAGING

REF 80002 1 x 5ml Plastic Dropper Bottle, 1 x Instruction Manual

SHIELD ACTIV

Dentin Desensitizer

One step single solution desensitizer which provides quick and easy chair side solution to sensitivity caused by open tubules, bacteria and micro leakage. It is applied in one step with a brush. It's HEMA based composition is soft tissue friendly and provides immediate relief from dentinal hypersensitivity.



INDICATIONS

- Cures dentinal hyper-sensitivity caused due to cervical erosions and exposed roots
- Fast action composition enabling quick sealing of tubules
- Inhibits bacterial growth due to quick action
- Cures hypersensitivity caused by open tubules micro leakage and technique sensitivity

PRODUCT BENEFITS

- Stops pain caused by hot or cold or sweet/spicy foods
- Ideal for use under all indirect restorations
- Insulates exposed dentine
- Fluoride alleviates thermal sensitivity
- Compatible with all amalgams, cements and composites
- Prevents post operative sensitivity

PACKAGING

REF 80003 1 x 5ml Squeeze Bottle, 1 x Instruction Manual

FLUOROTOP APF

Topical Fluoride Acidulated Phosphate Fluoride 1.23% Fluoride Ion

A topical APF anti-caries preparation for dental use 1.23 % fluoride ion from sodium fluoride. Optimized PH for a quick complete treatment. The improved thixotropic properties ensure closer adherence to enamel and interproximal areas. It contains xylitol-a proven anti-caries ingredient. The gel is offered in flavours for patient satisfaction and there's no bitter taste.

INDICATIONS

- Topical application of fluoride to aid in the protection against dental caries

PRODUCT BENEFITS

- Inhibits plaque build-up
- Prevents demineralization of tooth
- Promotes re-mineralization for caries protection and prevention
- Economical
- High fluidity for easy and quick application

PACKAGING

- REF 80005** Net content: 500 gm
REF 80004 Net content: 200 gm

Technical Data

1. pH	3.85
-------	------



FLUOROTOP NF

Topical Fluoride Gel 1.23% Fluoride, Neutral PH

A topical NF anti-caries preparation for dental use 1.23 % fluoride ion from sodium fluoride. Optimized PH for a quick complete treatment. The improved thixotropic properties ensure closer adherence to enamel and interproximal areas. It contains xylitol-a proven anti-caries ingredient. The gel is offered in flavours for patient satisfaction and there's no bitter taste.

INDICATIONS

- Topical application of fluoride to aid in the protection against dental caries

PRODUCT BENEFITS

- Inhibits plaque build-up
- Prevents demineralization of tooth
- Promotes re-mineralization for caries protection and prevention
- Economical
- High fluidity for easy and quick application

PACKAGING

- REF 80007** Net content: 500 gm
REF 80006 Net content: 200 gm

Technical Data

1. pH	7.55
-------	------



ACCUSIL PUTTY

Hydrophilic Vinyl Polysiloxane Impression Material, Putty

Accusil Putty is a very high viscosity two pastes elastomeric impression material with excellent hydrophilic properties, dimensional accuracy, high tear strength, and resistance to permanent deformation.



INDICATIONS

- Used with Accusil Light Body in a dual phase impression technique.
- Suitable for all impression techniques where a high viscosity material would be desired by the operator.
- Impressions of dentulous and edentulous arches, implants and precise duplication of models.

PRODUCT BENEFITS

- Accurate Impressions
- Extremely smooth
- Hydrophilic properties
- Exceptional dimensional stability
- High elasticity - Tear resistant
- Maximum elastic recovery

PACKAGING

REF 70003 Plastic Jar, 150ml Base Paste, 150ml Catalyst Paste, 2 Measuring Spoons, 1 X Instruction Manual

REF 70004 Plastic Jar 300ml Base Paste, 300ml Catalyst Paste, 2 Measuring Spoons, 1 x Instruction Manual

Technical Data	Standard Applied
1. Mixing Time	30 Sec.
2. Working Time	2 - 2.30 min
From Start of the mix	
3. Setting Time (in mouth)	2 - 2.30 min.
4. Final Setting time	5 min.
5. Shore Hardness	65 Min.
After 6 min.	

ACCUSIL LIGHT BODY

Hydrophilic Vinyl Polysiloxane Impression Material, Light Body

Accusil Light Body is silicone-based impression material for use in dentistry with automatic mixing device. It is a hydrophilic vinyl polysiloxane impression material for the production of extra ordinarily smooth and highly precision impressions for models, crowns, bridges and dentures.



INDICATIONS

- Wash material for the putty-wash impression technique
- Syringe material for the simultaneous mixing technique
- Impression material for relining
- Cavity impression of facing, inlay, onlay etc
- Impression of crown or bridge, partial or full denture

PRODUCT BENEFITS

- Excellent reproduction of marginal contours
- Excellent flow properties
- Excellent wettability
- Ideal working time
- Optimal intra-oral setting time
- Good tear strength and dimensional stability
- Compatible with all putty based VPS products.

PACKAGING

REF 70005-1 1 x 50ml Base/Catalyst Paste, 5x Mixing Tips- Yellow, 1 x Instruction Manual.

REF 70005 2 x 50ml Base/Catalyst Paste, 10 x Mixing Tips- Yellow, 1 x Instruction Manual.

Technical Data	Standard Applied
1. Setting Time	4:30 min.
2. Shore Hardness	65 Min.
After 6 min.	ISO 4823

ACCUSIL COMBO KIT

Hydrophilic Vinyl Polysiloxane Impression Kit (Putty & Light Body)

Accusil Putty is a very high viscosity two pastes elastomeric Impression Material with excellent hydrophilic properties, dimensional accuracy, high tear strength, and resistance to permanent deformation.

INDICATIONS

- Accusil Putty Impression Material is designed to be used with Accusil Light Body in a dual phase impression technique.
- Accusil Putty Impression Material is suitable for all impression techniques where a high viscosity material would be desired by the operator.
- Impressions of dentulous and edentulous arches, implants and precise duplication of models.

PACKAGING

REF 70004-1 Accusil Combo Kit Putty + Light Body (Soft) Hydrophilic Vinyl Polysiloxane impression Material 1 x 150ml Jar, Base Paste Putty, 1 x 150ml Jar, Catalyst Paste Putty, 2 x Spoon, 1 x 50ml Base/Catalyst Paste Light Body, 5 x Mixing Tips, 1 x Instruction Manual

Technical Data		Standard Applied
1. Mixing Time	30 Sec.	ISO 4823
2. Setting Time (in mouth) (Putty + Light Body)	2 - 2.30 min.	
2. Shore Hardness After 6 min.	65 Min.	



ACCUSIL BITE REGISTRATION

HYDROPHILIC VINYL POLYSILOXANE IMPRESSION MATERIAL, BITE BODY

Accusil Bite Registration is a vinylpolysiloxane (addition silicone), also known as A-Silicones especially made for bite registration work for crown and bridge, edentulous areas, implant techniques and laboratory procedures

INDICATIONS

- It is indicated for highly accurate bite registration techniques that enable to easily replicate correct intercuspal and centric relationships.

PRODUCT BENEFITS

- Good surface detail
- Easy to remove, trim and finish
- Requires less application time
- Dimensional stability and no shrinkage

PACKAGING

REF 70014 2 X 50ml Base /Catalyst Cartridge, 10 x Mixing Tips, 1 x Instruction Manual

REF 70014-1 1 X 50ml Base /Catalyst Cartridge, 5 x Mixing Tips, 1 x Instruction Manual



ACCUSIL HEAVY BODY

HYDROPHILIC VINYL POLYSILOXANE IMPRESSION MATERIAL, HEAVY BODY

Accusil Heavy Body is a heavy body polyvinyl siloxane impression material especially for the heavy wash impression, and Double arch Impression techniques



INDICATIONS

- Impressions used for the fabrication of indirect restorations (crowns, bridges, inlays, onlays and veneers)
- Dental implant impressions
- Matrix for wax-ups and treatment planning, study models
- Edentulous impressions
- Matrix used to create temporary restorations
- Bite registrations

PRODUCT BENEFITS

- Accurate reproduction of details
- Adequate working and setting time
- Excellent dimensional stability
- Choice of material for heavy wash & double arch impressions

PACKAGING

- REF 70015** (REGULAR SET) : 2 X 50ml Base /Catalyst Paste, 10 x Mixing Tips, 1 x Instruction Manual
REF 70015-1 (REGULAR SET) : 1 X 50ml Base /Catalyst Paste, 5 x Mixing Tips, 1 x Instruction Manual
REF 70015-2 (FAST SET) : 1 X 50ml Base /Catalyst Paste, 5 x Mixing Tips, 1 x Instruction Manual
REF 70015-3 (FAST SET) : 2 X 50ml Base /Catalyst Paste, 10 x Mixing Tips, 1 x Instruction Manual

ACCUSIL MONOPHASE

HYDROPHILIC VINYL POLYSILOXANE IMPRESSION MATERIAL, MONOPHASE

Accusil Monophase is a medium body vinyl polyvinyl siloxane impression material for one-step, impression techniques



INDICATIONS

- Taking impression over fixed/removable restorations and implants
- Functional impressions.
- Fabricating crown and bridgework or inlays.
- Fabricating full or partial dentures.
- Reline impressions.
- Transferring root posts when fabricating posts and cores indirectly

PRODUCT BENEFITS

- Precise and void free impressions
- Better flow delivers great detail reproduction
- Economical and accurate dispensing of material
- Less distortion during removal from the mouth due to snap set properties

PACKAGING

- REF 70006** Regular Set : 2 x 50ml Base/Catalyst Paste, 10 x Mixing Tips, 1 x Instruction Manual
REF 70006-1 Regular Set : 1 x 50ml Base/Catalyst Paste, 5 x Mixing Tips, 1 x Instruction Manual
REF 70006-2 Fast Set : 1 x 50ml Base/Catalyst Paste, 5 x Mixing Tips, 1 x Instruction Manual
REF 70006-3 Fast Set : 2 x 50ml Base/Catalyst Paste, 10 x Mixing Tips, 1 x Instruction Manual

ALFINA

Alginate Impression Material

Advanced new lead and dust free formula of ultra-fine alginate particles with significantly enhanced powder water affinity.

INDICATIONS

Impression for :

- Restorations like inlays, crowns, bridges, dentures and orthodontic applications
- Study models
- Opposing dentitions

PRODUCT BENEFITS

- Extremely good powder-water affinity
- Dust free & lead free
- Highly elastic with excellent elastic memory
- Easier and quicker to mix without bubbles or inconsistencies
- Better taste with no excessive salivation, which is pleasant for patient and user
- Ideal thixotropic properties so it flows easily under light pressure without causing gagging
- Excellent adhesion to hydrocolloid materials

PACKAGING

REF 70009 Alfina Regular Set/Fast Set 450g Aluminum foil bag

REF 70010 Alfina Chromatic Regular Set/Fast Set 450g Aluminum foil bag

SHADES

- Alfina Regular : Pink
- Alfina Chromatic : Yellow - Orange
- Alfina Fast Set : Pink



Technical Data

1. Setting Time	2.30 Min
2. Working Time	1.50 Min

HIFLEX GREEN STICKS

Impression Tracing Sticks

Thermoplastic sticks for functional and relining impressions and as a useful space maintainer.

INDICATIONS

- For border extensions on impression trays
- Ideal for recording full depth of sulcus
- Modify dental tray by building up material where tooth has been extracted
- Make functional and relining impressions

PRODUCT BENEFITS

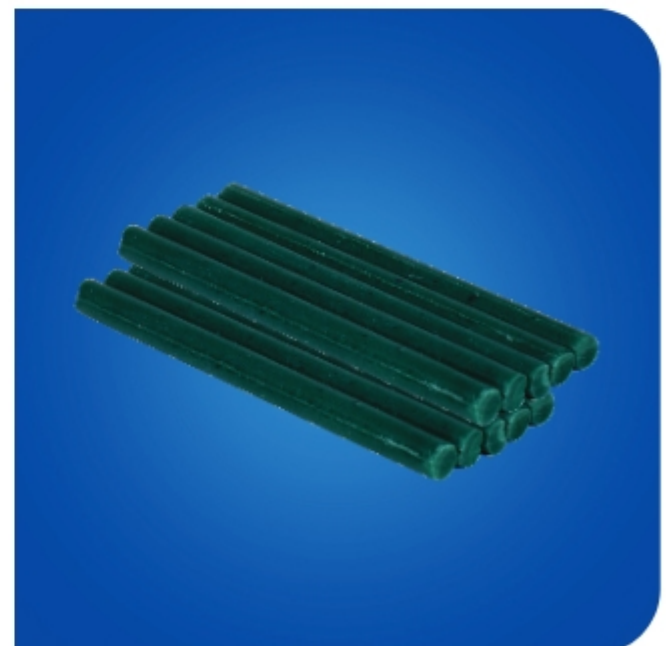
- Fast and uniform plasticity
- Easy to warm up
- Quick hardening in cold water
- Wide working area

PACKAGING

REF 70011 10 sticks, Net wt: 90g (each stick 9g)

Technical Data

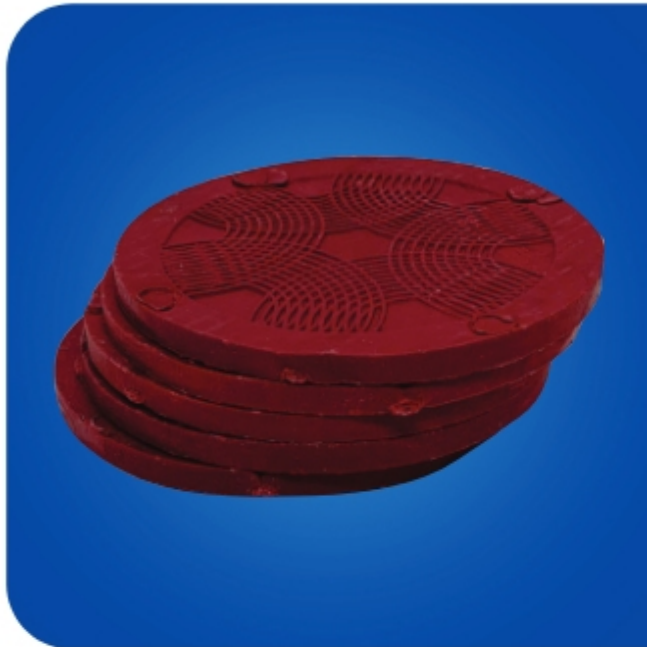
1. Working Temperature	50 - 52.2 C
2. Working Time	55 - 80 Sec.
3. Flow	50 - 65% at 37 C 75 - 82% at 45 C



HIFLEX IMPRESSION COMPOUND

Thermoplastic Impression Compound

Red Color Thermoplastic impression material in the form of round plate cakes to take primary impression in edentulous cases.



INDICATIONS

- Correction models
- Raising the edges of the impression
- For primary impression in edentulous cases before preparing special tray

PRODUCT BENEFITS

- Easy to adjust
- Alteration to impression can be made easily to achieve accurate impression
- Excellent compatibility with most hydro-colloid or silicone materials

PACKAGING

REF 70012 5 round plates / cakes, Net wt : 200 g

HIFLEX IMPRESSION PASTE

Zinc Oxide - Eugenol Based Impression Paste

Hiflex Zinc Oxide - Eugenol paste is an irreversible rigid impression material used as a secondary technique to take impression of edentulous patient with the help of muco compressive technique. The mix material adheres well to denture base, has adequate rigidity to prevent distortion of the impression borders. It has good dimensional stability, good detailed reproduction and impression can be modified by adding in deficient areas and easy to manipulate.



INDICATIONS

- Impressions for completely edentulous cases.
- Impressions for partially edentulous distal extension.
- Relining of denture base.

PRODUCT BENEFITS

- Good detail reproduction
- Dimensionally stable
- Easy manipulation
- Optimal consistency

PACKAGING

REF 70017 1 x 80g Base Paste, 1 x 120g Catalyst Paste, 1 x Instruction Manual.

FLORENCE

In-Office Whitening System

Florence In-office whitening system is rapid and easiest way to effectively whiten the teeth. It is based on pH-Activated, 35% Hydrogen Peroxide formula with build in desensitizer. It is a complete professional whitening system, safe and effective.

INDICATIONS

- In-Office whitening

PRODUCT BENEFITS

- No bleaching light needed
- Advanced chemical activated formula
- Whitening results in less than an hour
- In-built desensitizer for decreased sensitivity

PACKAGING

- REF 90001** One Patient Kit : 2 x 0.3g Powder Pots, 2 x 3ml Liquid Bottles, 1 x 1.2ml Gingiva Shield VLC, (Gingival barrier Syringes) 2 x Micro Brushes, 2 x Applicator Tips, 1 x Instruction Manual
- REF 90002** Two Patient Kit : 4 x 0.3g Powder Pots, 4 x 3ml Liquid Bottles, 2 x 1.2ml Gingiva Shield VLC (Gingival barrier Syringes), 1 x Mixing Pot, 4 x Micro Brushes, 4 x Applicator Tips, 1 x Instruction Manual

Technical Data

1. pH	7 - 8
-------	-------



24 CARAT

Advanced Zero Sensitivity Tooth Whitening System

24 Carat is a revolutionary, state-of-the-art, teeth whitening gel. Its advanced zero sensitivity formula eliminates sensitivity. The optimized pH gel consists of the active carbamide peroxide-glycerine combination suspended in high viscosity gel which considerably reduces the treatment time.

INDICATIONS

- Gentle and permanent whitening of teeth in cases of staining due to medication, fluorosis, food, tobacco and ageing
- Whitening of non vital teeth

PRODUCT BENEFITS

- Zero sensitivity formula
- Thick consistency gel
- High percentage of active teeth whitening ingredients
- Safe and gentle - optimized pH

PACKAGING

- REF 90003** Intro Pack : 1 x 5ml Syringe (16%), 1 x Applicator Tips, 1 x Instruction Manual
- REF 90004** Intro Pack : 1 x 5ml Syringe (22%), 1 x Applicator Tips, 1 x Instruction Manual
- REF 90005** Intro Pack : 1 x 5ml Syringe (35%), 1 x Applicator Tips, 1 x Instruction Manual
- REF 90006** Economy Pack : 4 x 1.5ml Syringe (16%), 4 x Applicator Tips, 1 x Instruction Manual
- REF 90007** Economy Pack : 4 x 1.5ml Syringe (22%), 4 x Applicator Tips, 1 x Instruction Manual
- REF 90008** Economy Pack : 4 x 1.5ml Syringe (35%), 4 x Applicator Tips, 1 x Instruction Manual

Technical Data

1. pH	7 - 8
2. Consistency	26 mm
3. Film Thickness	45 µm



GINGIVA SHIELD VLC

Light Curing Gingiva Resin Barrier, Blue

Gingiva Shield VLC is a light curing resin based, gingival barrier in syringe packing for isolating gums and neighbouring teeth. After bleaching, it is easily removable from the gum and inter-tooth spaces. It is a safe and effective barrier to protect soft tissues with impervious seal.



INDICATIONS

- Protection of gums during the whitening or other dental treatments

PRODUCT BENEFITS

- Light cured resin-based gingival barrier
- Protects soft tissue with impervious seal
- Easily removable after bleaching
- Convenient to apply from syringe

PACKAGING

REF 90010 Intro Pack : 2 x 1.2ml Syringe, 2 x Applicator Tips, 1 x Instruction Manual

REF 90011 Kit Pack : 4 x 1.2ml Syringe, 4 x Applicator Tips, 1 x Instruction Manual

Technical Data

1. Depth of Cure	2 mm
2. Flexural	55 - 60 MPa
3. Consistency	30 - 35 mm
4. Curing Time	40 Sec.

BIOENAMEL

Remineralizing & Desensitizing Gel Fortified with Bioglass

BioEnamel is a re-mineralizing gel which reduces post whitening sensitivity and effectively enhances the re-mineralization of the enamel.



INDICATIONS

- Remineralization of de-mineralized tooth structure.
- Post whitening sensitivity.
- Sensitivity caused due to non-carious lesions and sensitivity after oral prophylaxis.

PRODUCT BENEFITS

- Presented in a convenient dispenser pen with paint on brush for easy application.
- BioEnamel with bioglass re-mineralize the de-mineralized tooth structure.
- BioEnamel has inbuilt de-sensitizer.

PACKAGING

REF 90012 1 x 2ml Dispensing Pen, 1 x Instruction Manual

Technical Data

1. pH	5 - 6
2. Consistency	35 - 40 mm

24 CARAT

Advanced Zero Sensitivity Tooth Whitening System

24 Carat is a high viscosity tooth whitening gel presented in a convenient dispenser pen for paint on brush application. Its optimized pH considerably causes no sensitivity.

INDICATIONS

- Whitening of discoloured vital and non-vital teeth

PRODUCT BENEFITS

- Zero sensitivity formula
- Convenient pen dispenser for easy application
- Optimal viscosity gel

PACKAGING

REF 90003-1	Intro Pack : 1 x 2ml Dispensing Pen (16%), 1 x Instruction Manual
REF 90003-2	Intro Pack : 2 x 2ml Dispensing Pen (16%), 1 x Instruction Manual
REF 90004-1	Intro Pack : 1 x 2ml Dispensing Pen (22%), 1 x Instruction Manual
REF 90004-2	Intro Pack : 2 x 2ml Dispensing Pen (22%), 1 x Instruction Manual
REF 90005-1	Intro Pack : 1 x 2ml Dispensing Pen (35%), 1 x Instruction Manual
REF 90005-2	Intro Pack : 2 x 2ml Dispensing Pen (35%), 1 x Instruction Manual

Technical Data

1. pH	7 - 8
2. Consistency	25 - 30mm



TOOTH WHITENING PRODUCTS

HEMOSTAL

Gingival Retraction Solution

Hemostal is 25% buffered aluminium chloride solution to stop / control gingival bleeding during restorative procedures, placement of metal bands, cervical matrices, and crown preparations.



INDICATIONS

- Liquid to stop minor gingival bleeding

PRODUCT BENEFITS

- Non staining unlike ferric sulphate which stains porcelain veneers and crowns
- Effectively stops minor gingival bleeding
- Contains no epinephrine to help avoid cardiac reactions
- Stable and long shelf life

PACKAGING

REF 60001 1 x 15ml Glass Bottle, 1 x Dispensing Dropper,
1 x Instruction Manual

HEMOSTAL GEL

Gingival Retraction Gel

Hemostal Gel is 25% buffered aluminium chloride thixotropic, non dripping gel for stopping minor gingival bleeding during restorative procedures, placement of metal bands, cervical matrices, and crown preparations. Excellent handling properties make it easy to place class V composite restorations, cementation and scaling in periodontic cases.



INDICATIONS

- Gel to stop minor gingival bleeding

PRODUCT BENEFITS

- Thixotropic gel-convenient to apply
- Non staining unlike ferric sulphate which stains porcelain veneers and crowns
- Effectively stops minor gingival bleeding
- Stable and long shelf life
- Pleasantly flavoured

PACKAGING

REF 60002 Syringe Pack : 1 x 3g Syringe, 10 x Applicator Tips,
1 x Instruction Manual

ORAFIL-G / ORAFIL PLUS

Temporary Filling Material

Ready to use zinc sulphate cement for provisional filling and temporary insertion of permanent crowns and bridges.

INDICATIONS

- Temporary restoration of cavities in interval between tooth preparation and permanent cementation
- Cementing medium for temporary purpose, inserting all types of permanent crowns and bridges

PRODUCT BENEFITS

- Non eugenol formulation offers non irritating properties
- Resin addition gives high adhesive properties
- Quick and void free curing in moist environment
- Slight expansion of filling material ensures well sealed margin
- Excellent adaptability
- Simple to apply with filling instrument

PACKAGING

REF 11001 Jar Pack : 1 x 40g Jar - (Orafil-G), 1 x Instruction Manual
REF 11002 Jar Pack : 1 x 40g Jar - (Orafil-Plus), 1 x Instruction Manual

Technical Data		Standard Applied
1. Flow	16 mm	ISO 3107
2. Setting Time	6 Min 30 Sec.	
3. Compressive Strength	7 - 8 MPa.	



ORATEMP NE

Non-eugenol Temporary Luting Cement

OraTemp NE is a non eugenol temporary cement which permits placement and retention under function of permanent crowns, bridges, splints and their temporary counterparts. OraTemp NE is insoluble in oral fluids and retains a tight marginal seal to prevent leakage of these fluids under the restorations.

INDICATIONS

- Cementation of crowns, bridges and splints
- Retentions of temporary crowns and bridges
- Trial cementation of permanent restorations prior to final insertion

PRODUCT BENEFITS

- Excellent physical properties
- Easy to mix - easy to clean
- Low solubility in oral fluids
- Increased patient comfort

PACKAGING

REF 11003 Manual Mix Pack : 1 x 15g Cartridge - (Base & Catalyst), 1 x Spatula, 1 x Mixing Pad, 1 x Instruction Manual.

Technical Data		Standard Applied
1. Working Time	2 Min 5 Sec.	ISO 3107
2. Setting Time	8 Min 30 Sec.	
3. Compressive Strength	20 - 25 MPa.	
4. Film Thickness	20 µm	



ORAFIL LC

Light Cured, Temporary Filling Material

Orafil-LC is a light-curing material for temporary filling and sealing. The elastic consistency assures an easy removal, even in case of undercuts, and finishing the cavity is not necessary. Thus the fitting of the temporary filling will be improved. Orafil-LC is available in syringes for direct application into the cavity.



INDICATIONS

- All kinds of temporary fillings, temporary protection of inlays / onlays preparations.
- Implant screw access temporaries.
- Emergency repair of lost fillings and fractured teeth.

PRODUCT BENEFITS

- Quick and easy removal-can be removed in one piece-thus leave cavity clean upon removal.
- High wear resistance
- Excellent adhesion
- Durable and tight marginal seal
- Non eugenol composition.
- Suitable for long term temporaries.

PACKAGING

REF 11002-1 1 x 3g Syringe, 1 x Instruction Manual

Technical Data

1. Depth of Cure	4-5 mm
2. Curing Time	20-40 Sec.
3. Colour	Blue

ORATEMP C&B

Temporary Crown and Bridge Material

OraTemp C&B (crown and bridge material) is a composite material for the fabrication of temporary restorations. Based on multi-functional methacrylate esters, this two-component system has filling material-like properties. With the help of dispensing gun, the material can be applied directly from the cartridge without causing any bubbles to form a OraTemp temporary restorations.



INDICATIONS

- Fabrication of temporary crowns, bridges, inlays, onlays, and veneers.
- Fabrication of long-lasting temporary restorations.
- Lining material for prefabricated temporary crowns made of composite.

PRODUCT BENEFITS

- Excellent strength and low wear for durable temporaries.
- Superior surface details.
- 1 : 1 volume ratio for an even flow and improved handling properties.
- Low shrinkage and low curing temperature.
- Extremely polishable and colour stable.
- Can be easily repaired with flowable composite.

PACKAGING

REF 11005 1 x 67g Cartridge (Base + Catalyst Paste), 16 x Applicator Tips, 1 x Instruction Manual.

Technical Data

Technical Data		Standard Applied
1. Ratio (Base / Catalyst)	1 : 1	ISO-10477
2. Working time	1min-1min 20sec	
3. Setting Time	2min-2min 30sec	
4. Compressive Strength	300 MPa	
5. Flexural Strength	100 MPa.	

ULTRA BLOC VLC

Light Curing Block-out Resin

Ultra Bloc VLC is a viscous, light cured, methacrylate based resin for creating reservoir space for bleaching trays and is useful for laboratory procedures such as model and die repair. It can block out defects and under cuts on the stone models quickly and securely for precise abutment preparation.

INDICATIONS

- For creating reservoir space for bleaching trays
- Blocking out undercuts
- For laboratory mock-up on models
- Other laboratory procedures

PRODUCT BENEFITS

- Single component material blocks out defects and undercuts on the model quickly, precisely and securely
- Simple application with no sticking to instruments

PACKAGING

REF 90009 Kit Pack : 4 x 1.2ml Syringe, 4 x Applicator Tips,
1 x Instruction Manual



HIFLEX BASE PLATES

Hiflex Shellac Base Plates

High quality natural shellac base plates used as an intermediate in making prosthesis.

INDICATIONS

- Custom impression trays for impressions of edentulous jaws
- Manufacturing of wax bite registration templates
- Modelling work

PRODUCT BENEFITS

- High quality shellac for perfect results
- Retains heat for a prolonged time
- Optimum thickness for high mechanical strength
- Easily adaptable and Shape stability after cooling down
- Not adhesive to plaster

PACKAGING

REF 13001 20 upper/lower in mono box available in thickness : 1.3mm (Colors : Pink)



HIFLEX MODELLING WAX

Modelling Wax

Sheets of pink wax for modelling denture bases and acrylic saddle.



INDICATIONS

- Vestibular parts of wax models of removable dentures
- Pre-forms of jacket crowns
- Modelling of acrylic saddle supporting the teeth
- For occlusal registration (Bite Blocks)
- Manufacturing of spacers for custom impression tray

PRODUCT BENEFITS

- All purpose, multi utility wax
- Extra toughness
- High quality controlled by use of high quality materials and perfect production management
- Carves without chipping, Boils out cleanly
- Temperature stable during trial insertion and yet easily deformable ADA Type I

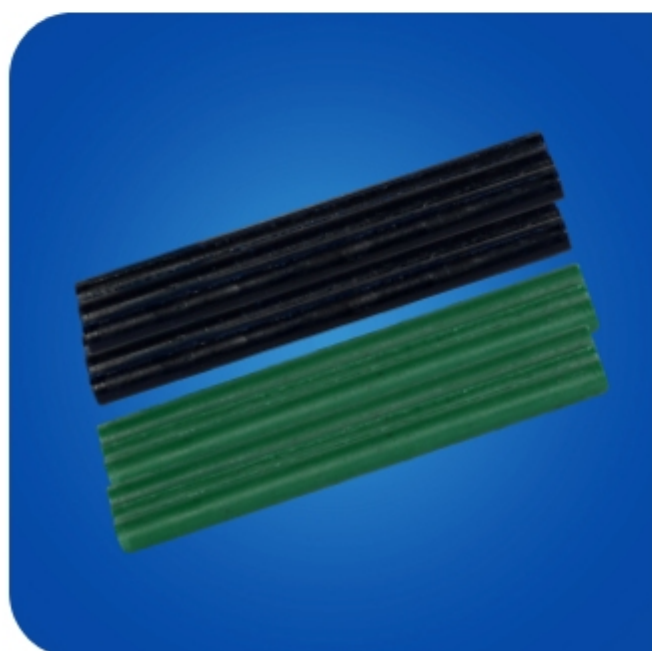
PACKAGING

- | | |
|------------------|-----------------------------|
| REF 13002 | 12 sheets in 225g mono pack |
| REF 13003 | 24 sheets in 500g mono pack |

HIFLEX INLAY CASTING WAX

Dental Inlay Casting Wax

Ideal wax with excellent plasticity for modeling of complicated preparations such as inlays, onlays, crowns and bridges.



INDICATIONS

- For modeling crowns and bridges
- For creating inlays and onlays

PRODUCT BENEFITS

- Zero shrinkage controlled by use of high quality materials and perfect production management
- Excellent scraping properties with short setting time
- Excellent Plasticity
- Suitable working with: Bunsen burner, Open flame, Electrical wax Knives
- Very precise modeling ability
- Burns out leaving no residue
- Smooth castings

PACKAGING

- | | | |
|------------------|---------------------------|--------------------------------|
| REF 13004 | 10 sticks of 60g per pack | Grades : Soft, Medium and Hard |
|------------------|---------------------------|--------------------------------|

HIFLEX CARVING WAX

Dental Carving Wax Blocks

Especially developed wax blocks to provide dental students with a wax suitable for carving tooth anatomy.

INDICATIONS

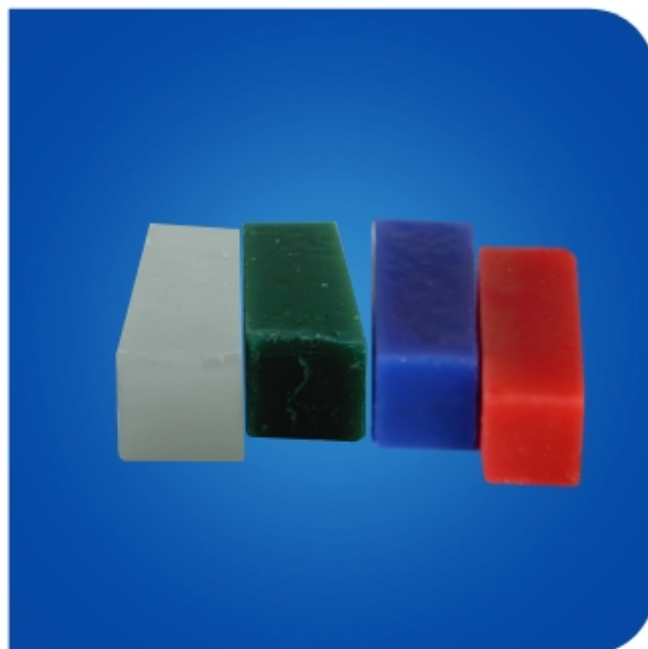
- Making tooth forms in the study of anatomy

PRODUCT BENEFITS

- Bubble free
- Does not chip or flakes
- Takes polish while carving
- Precise modelling
- Does not stick to model and instruments

PACKAGING

REF 13005 40 blocks in individual box Net wt : 200g
Colors : Red, Blue, Green and Natural



ISOLATE

Separating Emulsion

Excellent tin foil substitute used as separator between stone plaster and acrylic.

INDICATIONS

- For painting the plaster of the muffle before pressing the meth-acrylate resins
- Isolating film to prevent the resin from sticking to the plaster

PRODUCT BENEFITS

- Prevents denture from sticking to stone during acrylic processing
- Uniform film thickness permits closer adaptation of acrylic resin to model
- Prevents distortion in fitting of acrylic resin Pink Color Emulsion

PACKAGING

REF 14001 450 ml bottle
REF 14002 1 ltr bottle
REF 14003 5 ltr bottle



HIFLEX H

Ultra High Impact Heat Cured Denture Base

Ultra high impact heat cured denture base with excellent flow characteristics, good tensile strength and color stability.



INDICATIONS

- Ideal for highest quality of prosthetic work

PRODUCT BENEFITS

- Accurate Fit and Long working time in its dough stage
- Flowable and practicable consistency after mixing.
- Exceptionally high mechanical strength and high lusture finish
- Cadmium free composition

PACKAGING

REF 15004 Intro Pack : 1 x 225g Powder Jar, 1 x 150ml Liquid Bottle, 1 x Instruction Manual

REF 15005 1kg Powder in Plastic Jar

REF 15006 1ltr Liquid in Plastic Bottle

- Bulk packing of liquid and powder also available

SHADES

- Pink, Veined, Clear

HIFLEX RR

Denture Repair & Relining Material (Self Cure)

High quality denture base material for repairing dentures and carrying out additions or relining.



INDICATIONS

- Repair of full and partial dentures
- Relining of full and partial dentures
- Extensions to dentures

PRODUCT BENEFITS

- Produces extremely durable repairs and relines to existing dentures
- Exhibits very high bond strength to existing denture acrylics of all types
- Exceptionally high mechanical strength and high lusture finish
- Cadmium free composition

PACKAGING

REF 15001 Intro Pack : 1 x 225g Powder Jar, 1 x 150ml Liquid Bottle, 1 x Instruction Manual

REF 15002 1kg Powder in Plastic Jar

REF 15003 1ltr Liquid in Plastic Bottle

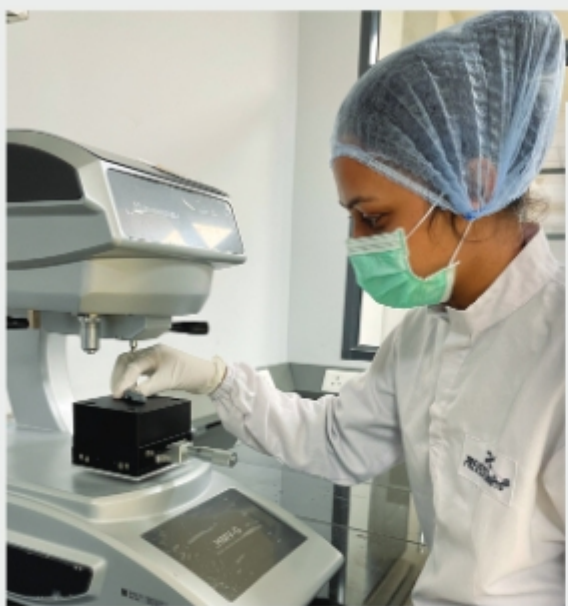
- Bulk packing of liquid and powder also available

SHADES

- Pink, Veined, Clear

MILESTONES







Prevest DenPro Limited

Unit-II, Export Promotion Industrial Park (EPIP),
Bari Brahmana, Jammu - 181 133, India.

Tele. : +91 1923 222774/79, Mobile : +91 94191 94280

E-mail : info@prevestdenpro.com Website : www.prevestdenpro.com

Toll Free Customer Care No. : + 91 8899074151 Email : customercare@prevestdenpro.com